

**Original Application. No. 138 of 2016 (T<sub>NHRC</sub>)  
AND  
Original Application No. 139 of 2016 (T<sub>NHRC</sub>) dated 07.08.2018**

**in the matter of**

**“Stench Grips Mansa's Sacred Ghaggar River  
(Suo-Motu Case) and Yogender Kumar**

**Comprehensive Report  
on  
Prevention and Control of Pollution in Ghaggar River: An  
Action Plan  
for Rejuvenation of River Markanda at Kala Amb, District- Sirmour, HP**

*(Submitted in compliance to the Hon'ble National Green Tribunal (NGT) order  
dated August 07, 2018)*



**HP State Pollution Control Board**  
Him Parivesh, Phase – III, New Shimla - 171009

# Contents

S. No.	Particulars	Page No.
1.	Background	1
2.	About River Markanda (Ghaggar) and its tributaries, activity in the area of River Markanda (Ghaggar) and its tributaries.	1-2
3.	Water Quality Goals as per the existing provisions or guidelines/ specifications of Center Pollution Control Board (CPCB).	2-3
4.	Sources of Pollution of River Markanda (Ghaggar) and its tributaries within the jurisdictions of Himachal Pradesh.	3-4
5.	Action initiated for ensuring compliance to the Hon'ble NGT, Principal Bench, Delhi order dated 07.08.2018 <i>vide</i> O.A. No. 138 of 2016 (T <sub>NHRC</sub> ) & O.A. No 139 of 2016 (T <sub>NHRC</sub> ).	4-6
6.	Existing Status in the catchment of river Markanda (Ghaggar) and its Tributaries.	6-15
7.	A map (preferably Digital Map) showing the sources of pollution ( area-wise information relating to – population, water consumption, sewage generation, drains contributing to pollution load in river Markanda (Ghaggar) and its tributaries within the jurisdiction of Himachal Pradesh.	15-17
8.	A map (preferably Digital Map) showing the sources of industrial pollution (area-wise information relating to – sector-wise no. of industries, sector-wise total water consumption in MLD, sector-wise industrial effluent generation in MLD etc.	18
9.	Observations on Gap Analysis w.r.t. (i) Sewage Management; (ii) Industrial Effluent Management; (iii) Operation and Maintenance of existing STPs; (iv) Operation and Maintenance of existing captive ETPs (v) Operation and Maintenance of existing CETPs (vi) Compliance Status w.r.t. the Industries located in the catchment area of River Markanda (Ghaggar).	19-52
10.	Proposed Action Plan (Short, Medium and Long term plan) with time lines including the organization/agency responsible for its implementation.	53-56
11.	Action Taken Report by District and State Level Surveillance Task Force.	57-60

<b>Sr. No.</b>	<b>List of Figures</b>	<b>Page No.</b>
Figure : 1	Digital Map showing Catchment Area of River Markanda at Kala Amb.	2
Figure : 2	Digital Map showing location of Kala Amb Industrial Area along with water consumption by industry, population falling in Markanda Basin	16
Figure : 3	Digital Map showing location of industries contributing to various drains falling in Markanda Basin	17
Figure : 4	Digital Map showing locations of Proposed CETP, ETPs and STPs in Markanda Basin	18
<b>Sr. No.</b>	<b>List of Tables</b>	<b>Page No.</b>
Table : 1	Designated Water Quality Criteria for Outdoor Bathing of CPCB	3
Table : 2	Water Polluting Industries in Kala Amb (An Overview)	3-4
Table : 3	Water Quality of Salani Khad, a tributary of River Markanda	6-7
Table : 4	Water Quality of Markanda River D/s of Salani Khad	7-8
Table : 5	Water Quality of Markanda River U/s Kala Amb	8
Table : 6	Water Quality of Jattan Wala Drain	8-9
Table : 7	Water Quality of Markanda River D/s Kala Amb	9
Table : 8	Industry-wise Water Consumption Details	10-14
Table : 9	Diseases prevalent in Kala Amb (Data Source: ESI Kala Amb)	14-15
Table : 10	List of Industries having Sewage Treatment Plants (STPs) in Kala Amb	18
Table : 11	Industry-wise Waste-water Treatment and Final Mode of Disposal of Effluent	18-27
Table : 12	Consent Status of Water Polluting Industries in Kala Amb	27-31
Table : 13	List of Industries complying and non- complying to the effluent discharge norms prescribed under Environment (Protection) Rules, 1986.	31-35
Table : 14	List of Total No. of Industries located in Kala Amb Area	36-52
<b>Sr.No.</b>	<b>List of Annexures</b>	
Annexure - I	Schedule-VI of the Environment (Protection) Rules, 1986	-
Annexure - II	Source: IS 1172:1993 Indian Standard Code of Basic Requirements for Basic Supply, Drainage and Sanitation.	-
Annexure - III	Notification of Special Task Forces at State Level and District level.	-
Annexure - IV	The minutes of meetings of District Level Special Task Force held on 05.10.2018, 12.10.2018 and 26.11.2018 to formulate the action plan and to review the progress in the matter.	-
Annexure - V	The Minutes of the State Level Task force meeting held on 31.12.2018.	-
Annexure - VI	Sampling results of 22 Drinking Water Supply Schemes conducted by Irrigation & Public Health (I&PH), Government of HP.	-

# **Report on Prevention and Control of Pollution in River Ghaggar: An Action Plan for Rejuvenation of River Markanda at Kala Amb, District- Sirmour, HP**

**1.0 BACKGROUND:-**Hon'ble National Green Tribunal passed the following orders in OA No. 138/2016 and 139/2018 titled Stench Grips Mansa's Sacred Ghaggar River (Suo-Motu Case) and Yogender Kumar on 07.08.2018 as per excerpts below.

*"In view of above disappointing scenario and utter failure of the Authorities in spite of pendency of these proceedings for the last 4 years and clean violation of law, there is no evidence of action taken against persons for responsible for the violation of law at large scale, we accordingly direct the Chief Secretaries of the States of Himachal Pradesh, Haryana, Punjab and also the Administrator of UT Chandigarh to constitute Special Task Force (STFs) comprising of District Magistrate, Superintendent of Police, Regional Officer of the State Pollution Control Boards in concerned District and one person to be nominated by the District Judge in every District in his capacity of Head of the District Legal Services Authority. Such STF may identify persons responsible for violation of law so that action can be taken. At the State level, the STF will comprise of the Chief Secretary, the Environment Secretary, the Secretary of Urban Development and Secretary of Local Bodies. The District level STFs will submit a monthly action taken report to the State STFs and the State STFs will furnish a 3 monthly report or the action taken to the Central Pollution Control Board. Such reports be uploaded on the websites of State Pollution Control Boards as well as the Environment Department of the States. Such STFs may be constituted within one month from today.*

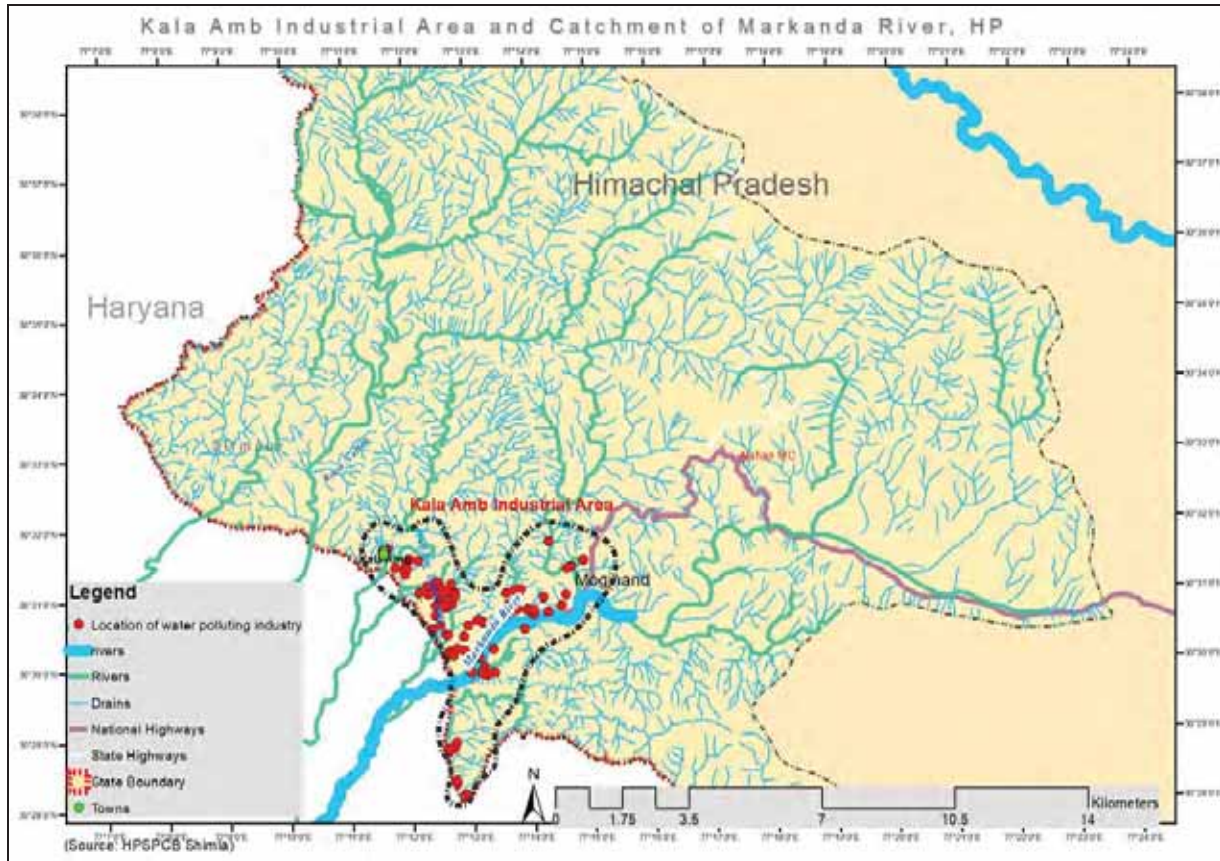
*Having regard to the alarming situation depicted in the joint inspection report apart from perusal action as above, an action plan with firm timelines is required to be prepared for preventing discharge of untreated effluents in the river by setting up appropriate anti-pollution device such as STP/ETP/CETP or any other such instruments. Wherever required polluting units have to be closed. The action plan must be realistic and provide for speedy mechanism....."*

## **2.0 About River Markanda (Ghaggar) and its tributaries, activity in the area of River Markanda (Ghaggar) and its tributaries**

**(a) The Ghaggar** is an intermittent river in India, flowing during the monsoon season. It originates in the Shivalik Hills of Himachal Pradesh and flows through Punjab, Haryana and Rajasthan. In Himachal Pradesh, River Kaushalya is one of the main tributaries of River Ghaggar. Further, River Markanda, the second major tributary of River Ghaggar joins it at Ismailabad downstream of Shahbad. The main districts of Himachal Pradesh in Ghaggar basin are Solan and Sirmour.

**(b) River Markanda**, a tributary of the River Ghaggar, is supposed to be a part of the ancient Vedic Saraswati River basin system. There is a large historic temple on the bank of the river, which is called Markandeshwar, after the name of the famous Maharshi Markandeya. This is a small river of Nahan area, in the Sirmour District, Himachal Pradesh. River Markanda enters Kala Amb at Bikram Bag and leaves at Sadhora Bridge. It covers a distance of about 24 KM in Himachal Pradesh from Rukhri to Kala Amb,

thereafter the river covers a distance of approx. 130 KM in Haryana before joining River Ghaggar at Ismailabad downstream of Shahbad.



*Figure 1: Digital Map showing Catchment Area of River Markanda at Kala Amb*

### 3.0 Water Quality Goals as per the existing provisions or guidelines/ specifications of Central Pollution Control Board (CPCB)

It is an important aspect for revival of River Markanda in context of its utility as it is non-perennial river. The ultimate goal for beneficial use of river will determine the level of actions to be taken for maintaining the water quality. Under the present circumstances, it appears that River Markanda may serve the purpose of outdoor bathing (organized) and for this objective; generated domestic sewage should be treated to meet the outdoor bathing standards. Also, the industrial effluents generated from various industries in the catchment of River Markanda, which are ultimately joining and contributing to the pollution load in river Markanda should be treated to meet the effluent discharge standards stipulated under Schedule-VI of the Environment (Protection) Rules, 1986 which is given as **Annexure-I**.

The requirement of river water quality for outdoor bathing (organized) also requires more stringent conditions and river water quality has to maintain adequate Dissolved Oxygen (DO) content. Suggested criteria for outdoor bathing (organized) in River Markanda are given in the following **Table - 1**.

**Table 1: Designated Water Quality Criteria for Outdoor Bathing of CPCB**

Sr. No.	Parameters	Class 'B' Water Quality Criteria –for Outdoor Bathing (Organized)
1	pH	6.5 to 8.5
2	Dissolved Oxygen (DO)	5mg/l or more
3	Biochemical Oxygen Demand 5 days 20C	3mg/l or less
4	Faecal Coliforms Organism	MPN/100ml shall be 500 or less

#### **4.0 Sources of Pollution of River Markanda (Ghaggar) and its tributaries within the jurisdictions of Himachal Pradesh**

The Kala Amb industrial area can be divided into four small zones as per drainage pattern.

- A. Industries located on the right and left bank of River Markanda from Moginand to Kala Amb barrier.
- B. Industries located in Jattan Wala Drain/Nallah catchment.
- C. Industries located in Khairi area.
- D. Industries located on Kala Amb - Sadhora Road in village Khari.

The main source of pollution in River Markanda includes Municipal, Commercial and Industrial waste from various industries and Kala Amb area. The Jattan Wala Drain is the major contributor in degrading the water quality of River Markanda. Jattan Wala Drain receives municipal waste water from Kala Amb area as well as treated effluent from various industries. The water quality of River Markanda upstream of Jattan Wala Drain is meeting the water quality parameters of class A. At the downstream of the Jattan Wala Drain, water quality is of B Class of CPCB designated Water Quality Criteria. M/s Ruchira Paper Mill is the only industry in Kala Amb that falls under 17 categories of highly polluting industries and the unit has installed real time online continuous water quality monitoring station at the outlet of the ETP. The results of treated effluent are being displayed on the CPCB and State Pollution Control Board servers on real time basis. In the catchment of Jattan Wala Drain other industries operating are of Pharmaceutical Formulation, Chemical Formulation, Metal Finishing etc. Total 94 water polluting industries located in the catchment of River Markanda. Out of total industries, 86 Nos of industries have provided their individual Effluent Treatment Plants and also 06 nos of Captive Sewage Treatment Plants installed wherever the manpower is more than 150. 02 industries have provided common ETP cum STP in their premise. The sector wise list of water polluting industries along with their estimated effluent discharge has been given in **Table 2**.



**Table 2: Water Polluting Industries in Kala Amb (An Overview)**

Sr. No.	Type of unit	Number of units	Effluent generated in KLD	ETP capacity provided in KLD
1	Cosmetic	4	7	28
2	Food Products	3	70	165
3	Glass unit	3	2.5	10
4	Katha Factory	1	5	10
5	Lime and chemicals	2	35	45
6	Metal Finishing	18	50	163.25
7	Miscellaneous Chemical	5	31	112
8	Pharmaceutical Formulation only	49	89.9	262.75
9	Pulp & Paper	2	5000	6000
10	Spinning & Dying Products	1	200	300
11	STP	6	50	100
<b>Total</b>		<b>94</b>	<b>5540.4</b>	<b>7196</b>
<b>Sewage and Sullage generation of Kala Amb Area:-</b> As per Census 2011, the population of Kala Amb & Moginand area in 2011 was 6,695 and the present population of the area is 7,280. The projected population after 20 years will be 10,010 considering the present growth rate of area. For this population sewage load calculations as per water demand of 135 liters per capita will be 1,081 KLD. In addition to this considering a floating population of around 10,000 in Kala Amb, sewage generation as per water demand of 45 liters per capita will be around 360 KLD ( <i>Source: IS 1172:1993 Indian Standard Code of Basic Requirements for basic supply, drainage and sanitation</i> ). Details are attached as <b>Annexure-II</b> .				

## **5.0 Action initiated for ensuring compliance to the Hon'ble NGT, Principal Bench, Delhi order dated 07.08.2018 vide O.A. No. 138 of 2016 (T<sub>NHRC</sub>) & O.A. No 139 of 2016 (T<sub>NHRC</sub>).**

- I. In pursuance to orders passed by Hon'ble National Green Tribunal, Special Task Forces at State Level and District level have been constituted *vide* the notification no. STE-E(3)-22/2018 dated 7<sup>th</sup> September 2018 by the Govt. of Himachal Pradesh for the purpose of identifying the persons responsible for discharging effluents beyond standards into tributaries of river Ghaggar leading to water pollution (Details attached as **Annexure- III**).
- II. District Level Special Task Force has conducted two meetings on 05.10.2018, 12.10.2018 and 26.11.2018 to formulate the action plan and to review the progress in the matter. The minutes of meetings are attached as **Annexure-IV**.

- III. State Level Special Task Force has conducted a meeting on 31/12/2018 under the chairmanship of Chief Secretary to the Govt. of Himachal Pradesh. Minutes of the meeting is annexed at **Annexure – V**.
- IV. There are around 94 water polluting industries in Kala Amb area. Inspection of all the water polluting industries in Kala Amb area has been carried out by the HP State Pollution Control Board Paonta Sahib as per inspection format provided by the Executive Committee and 69 no. of water samples were collected. The samples have been sent to the HPSPCB Regional Laboratory, Paonta Sahib and results of the 52 industries have been received so far. Out of 52 industries, results of 5 industries are above the prescribed limit. Notices for the same have been issued to the units. Second sample of the units have been collected and results are awaited from lab. ETP was found out of order in one industry. Power supply of the unit has been disconnected under Section 33 of the Water (Prevention & Control of Pollution) Act, 1974. Further, one unit was challaned under HP Non-Biodegradable Garbage, Act 1995 for littering of plastic waste for Rs. 5000=00 on dated 29.12.2018.
- V. The Chairman-cum-Deputy Commissioner, Sirmaur of District Level Task Force also carried out surprise inspection of various industries in Kala Amb from time to time. Directions were issued to different industries regarding proper operation of their respective ETPs and Management of Solid Waste.
- VI. Irrigation & Public Health (IPH) Sub Division Nahan have completed the sampling of 22 Drinking Water Supply Schemes and bore wells in Kala Amb and Moginand Area. The results of same are enclosed as **Annexure-VI**. Joint sampling of industrial borewells/tubewells is also being carried out by HPSPCB and I&PH. Seven samples have been collected from the borewells of different industries so far. Results of same are awaited from Lab.
- VII. I&PH Sub Division Nahan have assessed the Sewage Load of Kala Amb and Moginand area which comes around 1.0 MLD. I&PH Nahan will provide the Sewerage Lines and Primary treatment to the domestic sewage generated from the Kala Amb and Moginand Area. Secondary treatment will be provided in the proposed Common Effluent Treatment Plant (CETP) of 10 MLD capacity with tentative cost of installation is 20 Crores. I&PH Deptt has prepared the preliminary estimate for the laying of Sewerage Lines and primary treatment having tentative cost of Rs. 30.41 Crores.
- VIII. HPSPCB, Paonta Sahib is already collecting samples of River Markanda upstream Kala Amb, downstream Kala Amb and Jattan Wala Drain on monthly basis. River Markanda upstream and downstream Kala Amb is meeting the “*Water Quality Criteria- Class A*”. Results of River Markanda upstream Kala Amb, downstream Kala Amb and Jattan Wala Drain for 2017 & 2018 are placed in Tables at appropriate places.
- IX. I&PH Sub Division Nahan has submitted the DPR for the channelization of Markanda River from Rukhri to Kala Amb (24 KM) amounting to Rs. 114.02 Crore to the **Chairman Ganga Flood Control Commission, Patna for approval**. Channelization of drains leading to Markanda will be done by Himachal Pradesh State Industrial Development Corporation (HPSIDC).



- X. Deptt. of Health and Family Welfare, Distt. Sirmaur organized the multi-specialty health camp in Kala Amb area on 07.12.2018.
- XI. The process of installation of CETP at Kala Amb is under progress. Land for CETP has already been identified. M/s Environ Technology Ltd., Ankleshwar has been assigned the task of preparation of DPR. An advance of Rs. 3.5 Lakhs has already been issued to the agency for preparation of DPR by the Special Purpose Vehicle i.e. M/s Kala Amb Infrastructure Ltd. The matter regarding acquisition of land is under the consideration of Director, Industries.

## **6.0 Existing Status in the catchment of river Markanda (Ghaggar) and its Tributaries.**

### **6.1 Sewage and Industrial Effluent Management in the catchment of River Markanda:**

In Kala Amb, wastewater is being generated mainly from industrial, commercial and domestic activities. For the treatment of industrial effluents all the water polluting units have installed their respective ETPs. For the treatment of domestic sewage septic tanks/soak pits have been provided by individual households but due to inadequate capacity/improper design of septic tank/soak pits, sullage is flowing in the open drains and thereby degrading the water quality of River Markanda. Further, there are numerous road side *dhabas/butcher shops/sabji walas* who are dumping their solid/liquid waste into the drains nearby and thus choking them. Water stagnation and decaying biodegradable waste is also one of the contributing factors in deteriorating the water quality of River Markanda. Drains of Kala Amb area are not being cleaned regularly due to which water gets stagnated and its quality deteriorates. Solid waste not disposed of properly gets washed away in rain which finds its way into the drains thus degrading the water quality.

### **6.2 Water Quality of River Markanda and its Tributaries:**

The Markanda River enters in industrial area of Kala Amb at Moginand and leaves at bridge on Sadhora Road at Kala Amb. Mainly there are two tributaries and one industrial drain/nallah discharging their water into River Markanda. The State Pollution Control Board is collecting the samples of Salani Khad, Markanda River Downstream Salani Khad at Moginand, River Markanda Upstream Kala Amb, Jattan Wala Drain before confluence to River Markanda and River Markanda Downstream Kala Amb on monthly basis. The water quality of these locations for parameters concerning to Outdoor Bathing (Organized) for 2017 & 2018 are in **Table - 3 to 7**.

The water at Salani Khad, Markanda River Downstream Salani Khad at Moginand and River Markanda Upstream Kala Amb is meeting the Water Quality Criteria Class-A. The River Quality downstream the Kala Amb is mostly of class A, however in 2018 it has slipped from Class-A to Class-B in the month of February and October.

**Table 3: Water Quality of Salani Khad, a tributary of River Markanda**

Month	Year	Parameters				Water Quality Criteria
		pH	DO (in mg/L)	BOD (in mg/L)	TC (MPN)	
January	2017	SAMPLING LOCATION NOT IDENTIFIED				
	2018	7.98	8.0	0.2	27.0	Class-A
February	2017	SAMPLING LOCATION NOT IDENTIFIED				
	2018	8.04	8.0	0.2	31.0	Class-A
March	2017	SAMPLING LOCATION NOT IDENTIFIED				
	2018	8.22	7.4	0.2	33.0	Class-A
April	2017	8.24	7.6	0.2	24	Class-A
	2018	8.12	7.2	0.2	22.0	Class-A
May	2017	8.09	7.2	0.2	21.0	Class-A
	2018	SOURCE DRIED				
June	2017	7.0	7.0	0.1	20.0	Class-A
	2018	SOURCE DRIED				
July	2017	7.83	6.8	0.1	21.0	Class-A
	2018	8.23	6.0	0.9	43.0	Class-A
August	2017	8.06	8.3	0.1	32	Class-A
	2018	8.38	7.9	2.0	43.0	Class-A
September	2017	7.9	7.2	0.2	32.0	Class-A
	2018	8.40	7.9	1.0	41.0	Class-A
October	2017	8.06	7.4	0.2	24.0	Class-A
	2018	8.05	7.4	1.2	39.0	Class-A
November	2017	8.0	7.8	0.2	24.0	Class-A
	2018	8.09	9.4	1.0	38.0	Class-A
December	2017	8.0	7.6	0.2	25.0	Class-A
	2018	RESULT AWAITED				

**Table 4 : Water Quality of Markanda River D/s of Salani Khad**

Month	Year	Parameters				Water Quality Criteria
		pH	DO (in mg/L)	BOD (in mg/L)	TC (MPN)	
January	2017	SAMPLING LOCATION NOT IDENTIFIED				
	2018	7.95	7.9	0.4	34.0	Class-A
February	2017	SAMPLING LOCATION NOT IDENTIFIED				
	2018	8.02	7.9	0.4	34.0	Class-A
March	2017	SAMPLING LOCATION NOT IDENTIFIED				
	2018	8.29	7.3	0.3	38.0	Class-A
April	2017	8.22	7.3	0.3	25.0	Class-A
	2018	8.29	7.2	0.3	26.0	Class-A

Month	Year	Parameters				Water Quality Criteria
		pH	DO (in mg/L)	BOD (in mg/L)	TC (MPN)	
May	2017	8.21	7.1	0.3	24.0	Class-A
	2018	8.28	6.4	0.9	31.0	Class-A
June	2017	7.21	7.0	0.2	25.0	Class-A
	2018	8.14	6.6	0.5	25.0	Class-A
July	2017	8.02	6.6	0.2	24.0	Class-A
	2018	8.15	6.5	0.8	39.0	Class-A
August	2017	8.03	8.3	0.2	33.0	Class-A
	2018	8.19	7.9	0.6	40.0	Class-A
September	2017	7.93	7.2	0.1	34.0	Class-A
	2018	8.30	7.9	0.6	46.0	Class-A
October	2017	8.15	7.4	0.2	26.0	Class-A
	2018	8.07	8.6	0.6	34.0	Class-A
November	2017	8.08	7.8	0.2	27.0	Class-A
	2018	8.27	8.7	0.8	32.0	Class-A
December	2017	7.98	7.6	0.3	27.0	Class-A
	2018	RESULT AWAITED				

**Table 5: Water Quality of Markanda River Upstream Kala Amb**

Month	Year	Parameters				Water Quality Criteria
		pH	DO (in mg/L)	BOD (in mg/L)	TC (MPN)	
January	2017	8.07	7.4	0.2	31.0	Class A
	2018	7.82	7.7	0.4	32.0	Class A
February	2017	7.70	7.7	0.2	31.0	Class A
	2018	7.96	7.7	0.4	34.0	Class A
March	2017	7.80	7.4	0.2	21.0	Class A
	2018	8.01	7.2	0.3	40.0	Class A
April	2017	7.68	7.4	0.4	27.0	Class A
	2018	8.13	7.4	0.1	26.0	Class A
May	2017	7.96	7.6	0.1	26.0	Class A
	2018	8.34	6.3	1.8	32.0	Class A
June	2017	7.42	7.4	0.1	26.0	Class A
	2018	8.19	6.8	1.0	25.0	Class A
July	2017	7.73	6.7	0.4	26.0	Class A
	2018	7.92	6.8	1.0	40.0	Class A
August	2017	7.73	7.4	0.2	32.0	Class A
	2018	8.36	7.6	0.6	40.0	Class A
September	2017	7.99	7.3	0.2	32.0	Class A
	2018	7.40	8.2	0.5	43.0	Class A

Month	Year	Parameters				Water Quality Criteria
		pH	DO (in mg/L)	BOD (in mg/L)	TC (MPN)	
October	2017	8.04	7.4	0.3	26.0	Class A
	2018	7.86	8.2	0.6	41	Class A
November	2017	8.09	7.4	0.2	27.0	Class A
	2018	Result awaited				
December	2017	7.88	7.6	0.2	27.0	Class A
	2018	Result awaited				

**Table 6 : Water Quality of Jattan Wala Drain**

Month	Year	Parameters			
		pH	DO (in mg/L)	BOD (in mg/L)	TC (MPN)
January	2017	7.28	0	140	>1600
	2018	6.95	2	120	>1600
April	2017	7.59	0	160	>1600
	2018	7.5	0	260	>1600
July	2017	7.95	1.1	20	>1600
	2018	6.9	2.6	38	>1600
October	2017	7.52	1.9	140	>1600
	2018	7.25	0.4	70	>1600

**Table 7 : Water Quality of Markanda River Downstream Kala Amb**

Month	Year	Parameters				Water Quality Criteria
		pH	DO (in mg/L)	BOD (in mg/L)	TC (MPN)	
January	2017	7.98	7.3	0.4	39.0	Class A
	2018	8.08	7.7	0.8	48.0	Class A
February	2017	7.91	7.6	0.4	40.0	Class A
	2018	8.08	7.6	0.8	58.0	Class B
March	2017	8.20	7.2	0.3	79.0	Class B
	2018	8.38	7.0	0.6	48.0	Class A
April	2017	7.89	7.7	0.4	26.0	Class A
	2018	7.70	7.2	0.3	31.0	Class A
May	2017	7.68	7.4	0.4	27.0	Class A
	2018	Source was found dry				
June	2017	7.23	7.2	0.3	26.0	Class A
	2018	8.39	6.4	2.4	38.0	Class A
July	2017	8.17	6.7	0.4	26.0	Class A
	2018	8.16	6.7	0.6	43.0	Class A
August	2017	7.85	7.4	0.4	38.0	Class A
	2018	8.32	7.7	0.7	46.0	Class A

Month	Year	Parameters				Water Quality Criteria
		pH	DO (in mg/L)	BOD (in mg/L)	TC (MPN)	
September	2017	8.00	7.3	0.6	40.0	Class A
	2018	8.08	8.0	0.7	47.0	Class A
October	2017	8.05	7.4	0.4	32.0	Class A
	2018	8.11	9.2	0.9	70	Class B
November	2017	8.32	7.4	0.6	33.0	Class A
	2018	Result awaited				
December	2017	8.08	7.6	0.4	34.0	Class A
	2018	Result awaited				

### 6.3 Drinking Water Quality:

The ground water is the main source for domestic and industrial use in the Kala Amb area. I&PH have collected 22 Nos. of Ground Water Samples from different Tubewells and Borewells. The results are complying with the norms for *Indian Standards for Drinking Water Supply (IS: 10500:2004)*. The results have been enclosed as **Annexure-VI**.

### 6.4 Source of Water Consumption of Industries:

The source of water and its consumption in water polluting industries in Kala Amb area has been tabulated in **Table – 8**.

**Table 8: Industry wise water consumption details**

Sr. No.	Name of the unit	Address	Sub Catchment	Source of Water	Water Consumption (in KLD)
1	Adwin Pharma.	Vill. Rampur Jattan, Kala Amb.	Jattan Wala	Public Supply	4
2	AGV Fenestration (P) ltd.	Vill. Johron, Kala Amb.	Jattan Wala	Borewell	4
3	Alps Communications	Village Jattan Wala, Trilokpur Road, Kala Amb	Jattan Wala	Water Tankers	6
4	Art N Glass, Unit-I	Village Johron, Kala Amb	Jattan Wala	Borewell	5
5	Art-N-Glass unit II	Vill Johron, kala Amb	Jattan Wala	Public Supply	2
6	Axsys Solutions	Village Johron, Kala Amb	Jattan Wala	Borewell	5
7	Blue star Ltd, Unit-II	Village Manthapal, Kala Amb	Jattan Wala	Public Supply	10
8	BROP	Village Ogli, Trilokpur Road, Kala Amb	Jattan Wala	Public Supply	7
9	C S Zircon Product.	Village Rampur Jattan, Trilokpur Road, Kala Amb.	Jattan Wala	Borewell	20
10	Five Star Healthcare.	Vill. Ogli, Trilokpur Road, Kala Amb.	Jattan Wala	Public Supply	2

Sr. No.	Name of the unit	Address	Sub Catchment	Source of Water	Water Consumption (in KLD)
11	Geeta Industries	Vill. Ogli, Trilokpur Road, Kala Amb.	Jattan Wala	Public Supply	3
12	Gold Plus Himachal Safety Glass.	Village Johron, Kala Amb	Jattan Wala	Water Tankers	6
13	MMG Healthcare.	Vill. Johron Kala Amb.	Jattan Wala	Public Supply	5
14	Oscar Remedies	Vill. Johron Kala Amb.	Jattan Wala	Water Tankers	2.5
15	Ovation Remides.	Village Johron, Kala Amb.	Jattan Wala	Public Supply	6
16	Pidilite Industries (Unit-III)	Rampur Jattan, Kala Amb	Jattan Wala	Borewell	120
17	Pidilite Industry Ltd., (Unit-II)	Johoron, Kala Amb, Distt. Sirmour.	Jattan Wala	Borewell	136
18	Rich Gravis Pvt. Ltd	Village Manthapal, Kala Amb	Jattan Wala	Public Supply & Water Tankers	100
19	Ruchira Paper Mills Ltd. (Writing Ppaer Unit)	Trilokpur Road Kala Amb.	Jattan Wala	Borewell	2330
20	Ruchira Paper Mills Ltd. (Kraft Paper Unit)	Kala Amb, Distt. Sirmour HP.	Jattan Wala		5700
21	Saboo Cylinder.	Ind Area Kala Amb.	Jattan Wala	Borewell	9
22	Sagar Katha Factory	Trilokpur Road Kala Amb.	Jattan Wala	Borewell	20
23	Sarv Biolab (P) ltd.	Village Rampur Jattan, Trilokpur Road, Kala Amb.	Jattan Wala	Water Tankers	13
24	SBS Biotech. Unit -I	Vill. Rampur Jattan, Nahan Road, Kala Amb.	Jattan Wala	Water Tankers	10
25	Sheela Foam.	Nahan Road, Kala Amb.	Jattan Wala	Public Supply	25
26	Shree Krishna Steelage (P) ltd.	Trilokpur Road Kala Amb.	Jattan Wala	Borewell	8
27	Sidhi Vinayak Industries	Village Johron, Kala Amb	Jattan Wala	Water Tankers	4
28	SNS Corporation Unit-II	Village Rampur Jattan, Nahan Road, Kala Amb	Jattan Wala	Water Tankers	3
29	Systole Remedies.	Vill. Ogli, Trilokpur Road, Kala Amb.	Jattan Wala	Water Tankers	3
30	Vinay Packaging (Athens Lab)	Vill. Rampurjattan, Nahan Road, Kala Amb.	Jattan Wala	Water Tankers	6
31	Virgo Aluminium	Village Rampurjattan, Kala Amb	Jattan Wala	Water Tankers	10



Sr. No.	Name of the unit	Address	Sub Catchment	Source of Water	Water Consumption (in KLD)
32	Accura Care Pharmaceuticals (P) Ltd.	Vill. Moginand, Kala Amb.	Moginand	Water Tankers	9
33	Blue Star Ltd, Unit-I	Village Moginand, Kala Amb	Moginand	Water Tankers	18
34	Care Cosmetic.	Vill. Moginand Kala Amb	Moginand	Water Tankers	2.5
35	Elnova Pharma.	Village Moginand, Kala Amb.	Moginand	Water Tankers	19
36	Gnosis Pharma.	Vill. Moginand Kala Amb.	Moginand	Water Tankers	10
37	Indkus biotech india	Village moginand, Kala Amb	Moginand	Water Tankers	7.5
38	Indo Rama Engineers	Village Moginand, Kala Amb	Moginand	Water Tankers	4.5
39	Integrated Lab.	Moginand Kala Amb.	Moginand	Water Tankers	3
40	Welcure Remedies	Moginand Kala Amb.	Moginand	Water Tankers	3
41	KAG Industries	Village Moginand, Kala Amb	Moginand	Borewell	65
42	Konark Enterprises.	Vill. Moginand Kala Amb	Moginand	Water Tankers	5
43	Konark Fixtures	Village Moginand, Kala Amb	Moginand	Water Tankers	15
44	Konark Herbal & Health Care	Village Moginand, Kala Amb	Moginand	Water Tankers	15
45	Konark Poducts	village Moginand, Kala amb	Moginand	Water Tankers	6
46	Medisys Biotech Private Limited.	Moginand, Kala Amb.	Moginand	Borewell	3.5
47	Phoenix Udyog.	Kala Amb, Distt. Sirmour HP.	Moginand	Water Tankers	1
48	Pidilite Industry Ltd.,(Unit -I)	Village Moginand, Kala Amb	Moginand	Borewell	12
49	Sozin Flora Pharma.	Village Moginand, Kala Amb.	Moginand	Borewell	7
50	Sunvet Pharma Private Limited.	Village Moginand, Kala Amb.	Moginand	Water Tankers	3.5
51	Indo Phyto Chem	Mauza Rampur Jattan, Nahan Road, Kala Amb	Moginand	Water Tankers	6
52	Alfa Remedies	Suketi Road Kala Amb	Suketi Road	Water Tanker	2

Sr. No.	Name of the unit	Address	Sub Catchment	Source of Water	Water Consumption (in KLD)
53	Biologic Inc.	Vill. Ogli, Suketi Road, Kala Amb.	Suketi Road	Borewell	2
54	Insight Soft Labz	Suketi Road Kala Amb	Suketi Road	Water Tanker	1
55	Protech Telelinks	Suketi Road Kala Amb	Suketi Road	Water Tanker	5
56	Shivam Enterprises	Suketi Road Kala Amb	Suketi Road	Borewell	5
57	Symboisis Pharmaceuticals.	Suketi Road, Kala Amb.	Suketi Road	Water Tanker	15
58	Candour Pharmaceuticals	Suketi Road, Kala Amb.	Suketi Road	Borewell	4
59	Algen Healthcare.	Sadhora Road, Kala Amb (Near SPT Industries)	Sadhora Road	Water Tanker	4
60	Aqua Parental	Village Khari, Sadhora Road, Kala Amb	Sadhora Road	Borewell	10
61	Himachal Polyfins.	Village Khari, Sadhora Road, Kala Amb.	Sadhora Road	Purchased water	130
62	Orison Pharma International.	Vill. Ogli, Sadhora Road, Kala Amb	Sadhora Road	Borewell	12
63	Primus Pharmaceutical	Village Kheri, Sadhora Road, Kala Amb	Sadhora Road	Water Tanker	5
64	SPT Industries	Village Ogli, Sadhora Road, Kala Amb	Sadhora Road	Water Tanker	5
65	UB Bisucits Pvt. Ltd.	Village Khari, Sadhora road, Kala Amb	Sadhora Road	Borewell	14
66	JMM Laboratories	Sadhora Road Kala Amb.	Suketi Road	Water Tanker	3
67	Digital Vision.	Village Ogli, Kala Amb	Ogli	Borewell	5
68	Helpzyn Pharma	Nahan Road, Kala Amb.	Ogli	Water Tanker	1
69	Iskon Remedies.	Village Ogli, Nahan Road, Kala Amb.	Ogli	Water Tanker	1.5
70	Myron Industries	Village Ogli, Nahan Road, Kala Amb	Ogli	Water Tanker	5
71	Progressive Industries	Village Ogli, Nahan Road, Kala Amb	Ogli	Water Tanker	6
72	Vashishat Chemical.	Nahan Road Kala Amb.	Ogli	Surface Water	30
73	Events Corporation, Unit-II	Village Ogli, Nahan Road, Kala Amb	Ogli	Water Tanker	3
74	Bimal Industries unit-II	IA kala amb	Khairi	Public Supply	8
75	Bothra Metals & Alloys.	Vill. Kheri, Trilokpur Road, Kala Amb.	Khairi	Water Tankers	8

Sr. No.	Name of the unit	Address	Sub Catchment	Source of Water	Water Consumption (in KLD)
76	CBM Industries.	Village Kheri, Trilokpur Road, Kala Amb.	Khairi	Purchased water	3
77	GMT Machine Tools	Village Johron, Kala Amb	Khairi	Water Tankers	6
78	Grampus Laboratories.	Vill. Johoron, Kala Amb.	Khairi	Public Supply	3
79	Him Sagar Laboratories.	Village Kheri, Trilokpur Road, Kala Amb.	Khairi	Public Supply	1.5
80	JHS Svendgard Laboratories Ltd.	Village Kheri, Trilokpur Road, Kala Amb.	Khairi	Water Tankers	6
81	MBC Industries	Kala Amb	Khairi	Public Supply	1
82	MK Auto Clutch Co.	Villahe Kheri, Kala Amb	Khairi	Water Tankers	8
83	Oyster Pharma.	Plot No. 35, IA, Kala Amb.	Khairi	Public Supply	1
84	Pashupati Spinning & Weaving Mills.	Village Kheri, Trilokpur Road, Kala Amb.	Khairi	Borewell	300
85	PioneerEmbroideries.	Vill. Kheri, Kala Amb.	Khairi	Borewell	20
86	Pushkar Pharma.	Village Kheri, Meerpur Road, Kala Amb.	Khairi	Borewell	4
87	Sai Corporation	Village Johron, Kala Amb	Khairi	Water Tankers	7
88	Sai Tech Pharmaceuticals.	Vill. Kheri Trilokpur Road, Kala Amb	Khairi	Water Tankers	6
89	Shivom Cotspin Ltd.	Vill. Kheri Kala Amb.	Khairi	Borewell	18
90	SPK Wire Products P. Ltd	Village Kheri, Trilokpur Road, Kala Amb	Khairi	Water Tankers	1
91	Vanesa Cosmetics.	Ind. Area Kala Amb.	Khairi	Water Tankers	4
92	Varav Biogenesysis P. Ltd	Village Johron, Kala Amb	Khairi	Public Supply	15
93	Vidyasha Pharmaceuticals	Vilage Johron, Kala Amb	Khairi	Public Supply	1
94	Indo Herbal Extractions	Village Meerpur, Kala Amb	Meerpur	Water Tankers	1

### 6.5 Domestic Water Consumption:

As per Census 2011, the population of Kala Amb & Moginand area was 6,695 and the present population is 7,280. At present all the rural water supply schemes under I&PH division, Nahan have been designed on the water requirement of 70 liter per capita per day demand (norm set for rural water supply system). Therefore, the total domestic water consumption of Kala Amb and Moginand area comes out around 510 KLD. Further, considering the floating population of about 10,000 water requirement works out to be 450 KLD at the rate of 45 liters per capita for the workers etc. **(Source: IS 1172:1993 Indian Standard Code of Basic Requirements for basic supply, drainage and sanitation) (Annexure-VII).**

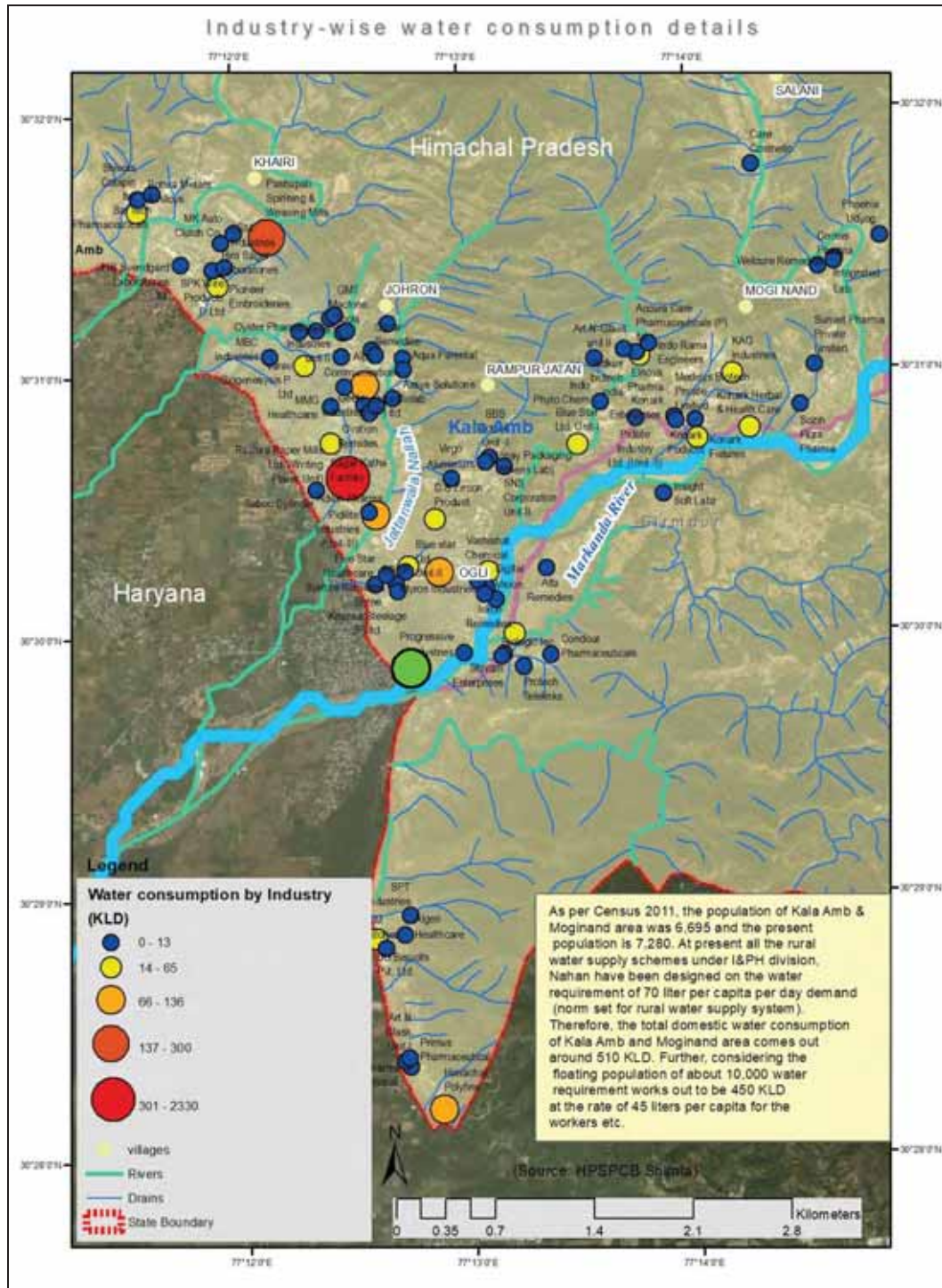
## 6.6 Health Status of Public

As per data received from the Deptt. of Health & Family Welfare, most of the cases received in Kala Amb area were of ARI/Influenza, Acute Diarrhoea, Dog Bite and Enteric Fever. The detailed list of cases received at ESI Dispensary Kala Amb during 2016-17 to 2018-19 (till Nov) have been given in **Table 9**.

**Table 9: Diseases Prevalent in Kala Amb (Data Source: ESI Kala Amb)**

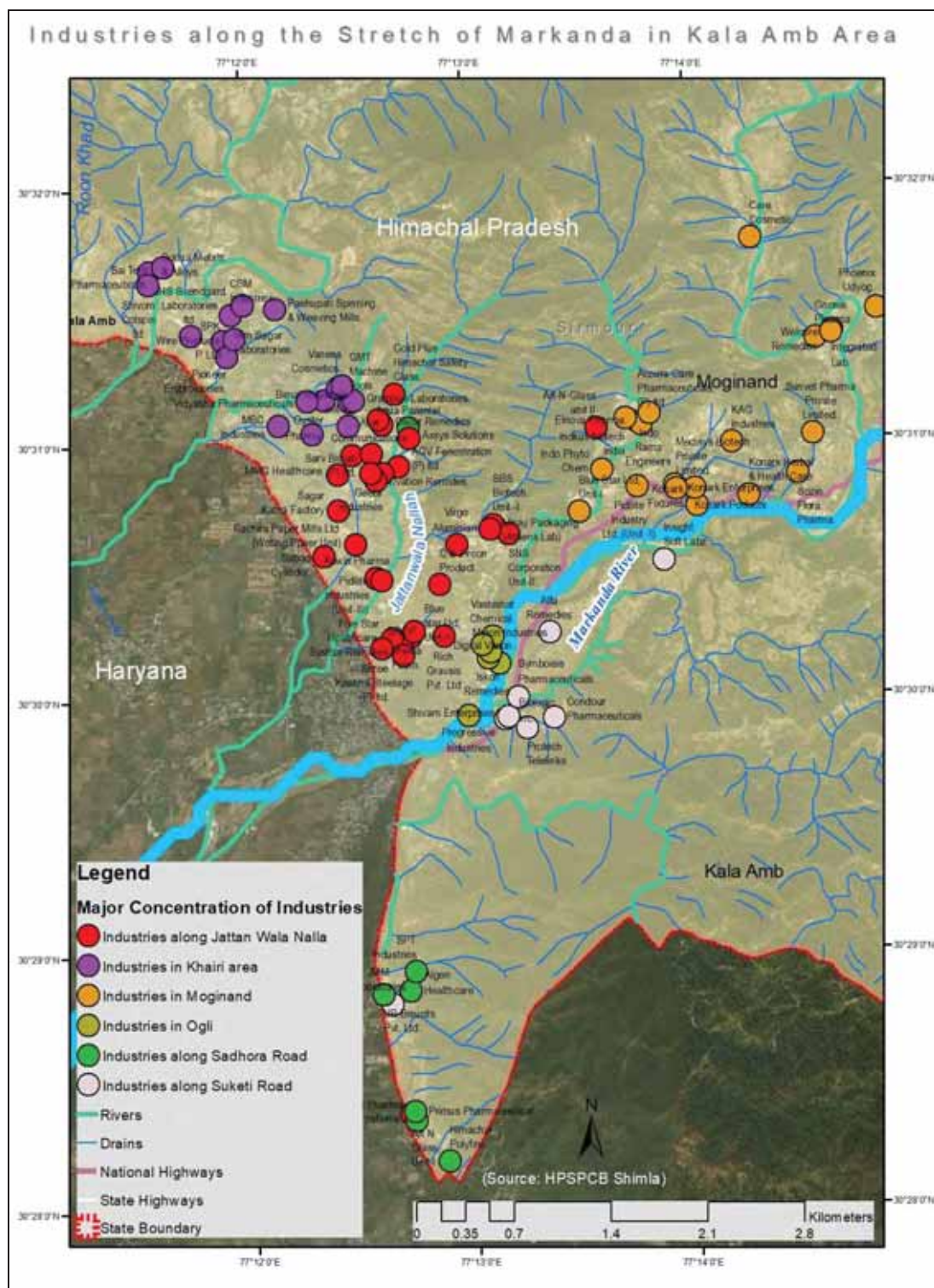
Sr. No.	Diseases	2016-17	2017-18	2018-19 (Till Nov)
1	ARI/Influenza	1103	1114	852
2	Acute Diarrhoeal Disease	122	81	63
3	Dog Bite	42	42	25
4	Enteric Fever	14	99	0
5	Chicken Pox	9	19	8
6	Viral Hepatitis	0	4	0
7	Malaria	0	5	1
8	Dengue/DHF	0	15	0

**7.0 A map (preferably digital map) showing the sources of pollution (area-wise information relating to – population, water consumption, sewage generation, drains contributing to pollution load in river Markanda (Ghaggar) and its tributaries within the jurisdiction of Himachal Pradesh.**



**Figure 2: Digital Map showing location of Kala Amb Industrial Area along with water consumption by industry, population falling in Markanda Basin**





**Figure 3: Digital Map showing location of industries contributing to Drains falling in Markanda Basin**



8.0 A map (preferably Digital map) showing the sources of industrial pollution (area-wise information relating to – sector-wise no. of industries, sector-wise total water consumption in MLD, sector-wise industrial effluent generation in MLD etc.

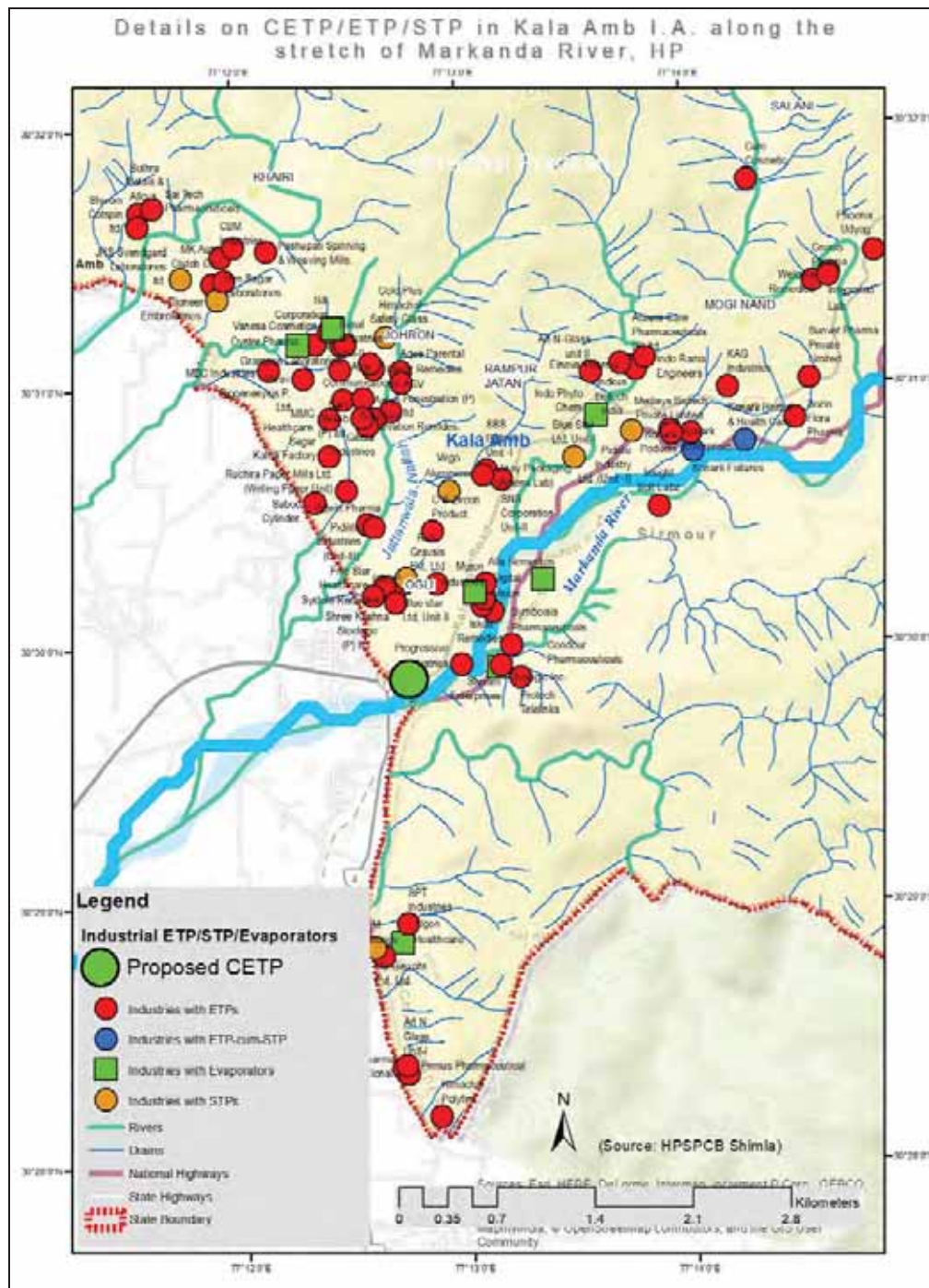


Figure 4 : Digital Map showing locations of Proposed CETP, ETPs and STPs in Markanda Basin

**9.0 Observations on Gap Analysis w.r.t. (i) Sewage management; (ii) Industrial Effluent Management; (iii) Operation and Maintenance of existing STPs; (iv) Operation and Maintenance of existing captive ETPs; (v) Operation and Maintenance of existing CETPs; (vi) Compliance status w.r.t. the industries located in the catchment area of River Markanda (Ghaggar).**

The industrial Area of Kala Amb is a rural area where industries are located on Trilokpur Road, Nahan Road, Sadhora Road and Saketi Road. There is no sewage treatment system or CETP in the area.

**9.1 Sewage Management** - The individual households have the septic tank followed by soak pit. Total 06 industries have provided the captive Sewage Treatment Plants or Effluent cum Sewage Treatment Plant wherever manpower is more than 150. The sewage treatment system installed comprises of activated sludge process followed by sand and activated carbon filters. The treated sewage is being used by most of the industries in gardening, flushing and wetting of roads. List of industries having STPs have been tabulated in **Table 10**.

**Table 10 : List of Industries having STPs in Kala Amb**

Sr. No.	Name of the unit	Address	Sub Catchment	Actual Discharge (in KLD)	STP Capacity (in KLD)
1	Blue Star Ltd, Unit-I	Village Moginand, Kala Amb	Moginand	8	15
2	Blue star Ltd, Unit-II	Village Manthapal, Kala Amb	Jattan Wala	8	15
3	Pidilite Industry Ltd.,(Unit -I)	Village Moginand, Kala Amb	Moginand	5	15
3	Pioneer Embroideries.	Vill. Kheri, Kala Amb.	Khairi	16	20
5	Sheela Foam.	Nahan Road, Kala Amb.	Jattan Wala	8	25
6	Shivom Cotspin Ltd.	Vill. Kheri Kala Amb.	Khairi	5	10
<b>Total</b>				<b>50</b>	<b>100</b>

**9.2 Effluent Treatment-** All the 94 Nos of water polluting industries in the industrial area Kala Amb have installed effluent treatment plants or Sewage Treatment Plants in their respective industries. The treatment technology provided ranges from primary treatment system i.e. chemical treatment, precipitation/settling followed by dual media carbon filters, Activated sludge process followed by dual media carbon filters, the chemical recovery system has also been installed in a paper mill, few industries have also provided RO systems. The treated effluent is being used in the process, gardening, flushing, wetting of roads etc.

The list of industries along with mode of treatment and final disposal has been given in **Table 11**.

**Table 11: Industry-wise Waste-water Treatment and Final Mode of Disposal of Effluent**

Sr. No.	Name of the unit	Address	Area	Treatment Process	Final Mode of Disposal
1	Adwin Pharma.	Vill. Rampur Jattan, Kala Amb.	Jattan Wala	The unit has provided an ETP comprising of physico-chemical treatment followed by biological treatment, sand and activated carbon filter.	Reused in Gardening and Wetting of floor
2	AGV Fenestration (P) Ltd.	Vill. Johron, Kala Amb.	Jattan Wala	The unit has provided an ETP comprising of physico-chemical treatment followed by sand and activated carbon filter.	Reused in Gardening
3	Alps Communications	Village Jattan Wala, Trilokpur Road, Kala Amb	Jattan Wala	The unit has provided an ETP comprising of physico-chemical treatment followed by biological treatment, sand, activated carbon filter, micro filter, RO and evaporator.	Reused in Gardening
4	Art N Glass, Unit-I	Village Johron, Kala Amb	Jattan Wala	The unit has provided an ETP comprising of physico-chemical treatment followed by dual media filter.	Reused in Gardening
5	Art-N-Glass unit II	Vill Johron, kala Amb	Jattan Wala	The unit has provided an ETP comprising of physico-chemical treatment followed by sand and activated carbon filter.	Drain
6	Axsys Solutions	Village Johron, Kala Amb	Jattan Wala	The unit has provided an ETP comprising of physico-chemical treatment followed by sand and activated carbon filter.	Reused in Gardening
7	Blue star Ltd, Unit-II	Village Manthapal, Kala Amb	Jattan Wala	There is no process effluent. However the unit has provided the STP for the treatment of domestic sewage and sullage.	Reused in Gardening
8	BROP	Village Ogli, Trilokpur Road, Kala Amb	Jattan Wala	The unit has provided an ETP comprising of physico-chemical treatment followed by sand, activated carbon filter and evaporator.	Evaporator
9	C S Zircon Product.	Village Rampur Jattan, Trilokpur Road, Kala Amb.	Jattan Wala	The unit has provided an ETP comprising of physico-chemical treatment f	Drain
10	Five Star Healthcare.	Vill. Ogli, Trilokpur Road, Kala Amb.	Jattan Wala	The unit has provided an ETP comprising of physico-chemical treatment followed by dual media filter.	Reused in Flushing and Gardening
11	Geeta Industries	Vill. Ogli, Trilokpur Road, Kala Amb.	Jattan Wala	The unit has provided an ETP comprising of physico-chemical treatment followed by dual media filter.	Reused in Flushing
12	Gold Plus Glass Industries	Village Johron, Kala Amb	Jattan Wala	The unit has provided an ETP comprising of chemico physico treatment followed by dual media filter.	Reused in Gardening

Sr. No.	Name of the unit	Address	Area	Treatment Process	Final Mode of Disposal
13	MMG Healthcare.	Vill. Johron Kala Amb.	Jattan Wala	The unit has provided an ETP comprising of physico-chemical treatment followed by biological treatment and dual media filter.	Drain
14	Oscar Remedies	Vill. Johron Kala Amb.	Jattan Wala	The unit has provided an ETP comprising of physico-chemical treatment followed by biological treatment and dual media filter.	Drain
15	Ovation Remedies.	Village Johron, Kala Amb.	Jattan Wala	The unit has provided an ETP comprising of physico-chemical treatment followed by biological treatment, sand and activated carbon filter.	Reused in Gardening
16	Pidilite Industries (Unit-III)	Rampur Jattan, Kala Amb	Jattan Wala	The unit has provided an ETP cum STP comprising of physico-chemical treatment followed by biological treatment, dual media and activated carbon filter. The unit was directed to properly maintain the operation record of the ETP.	Reused in Gardening
17	Pidilite Industry Ltd., (Unit-II)	Johoron, Kala Amb, Distt. Sirmour.	Jattan Wala	The unit has provided an ETP cum STP comprising of physico-chemical treatment followed by biological treatment, sand and activated carbon filter. The unit was directed to properly maintain the operation record of the ETP.	Reused in Gardening
18	Rich Gravsis Pvt. Ltd	Village Manthapal, Kala Amb	Jattan Wala	The unit has provided an ETP comprising of physico-chemical treatment followed by biological treatment, sand, activated carbon filter, Ultra Filtration and RO. The unit was directed to provide flow meter at the outlet of ETP.	Reused in Gardening
19	Ruchira Paper Mills Ltd. (Writing Ppaer Unit)	Trilokpur Road Kala Amb.	Jattan Wala	The unit has provided an ETP comprising of Chemical recovery for black liquor. The paper machine effluent reused in pulping and other waste water is treated in ETP comprising of physico-chemical treatment followed by biological treatment. Further, the unit has provided Real Time Online Continuous Water Quality Station to check the effluent quality on real time basis. The unit was directed to have treatment system for colour removal.	Drain
20	Ruchira Paper Mills Ltd. (Kraft Paper Unit)	Kala Amb, Distt. Sirmour HP.	Jattan Wala		
21	Saboo Cylinder.	Ind Area Kala Amb.	Jattan Wala	The unit has provided an ETP comprising of physico-chemical treatment followed by biological treatment, sand and activated carbon filter.	Drain

Sr. No.	Name of the unit	Address	Area	Treatment Process	Final Mode of Disposal
22	Sagar Katha Factory	Trilokpur Road Kala Amb.	Jattan Wala	The unit has provided an ETP comprising of physico-chemical treatment followed by biological treatment, sand and activated carbon filter.	Drain
23	Sarv Biolab (P) Ltd.	Village Rampur Jattan, Trilokpur Road, Kala Amb.	Jattan Wala	The unit has provided an ETP comprising of physico-chemical treatment followed by biological treatment, sand and activated carbon filter.	Drain
24	SBS Biotech. Unit -I	Vill. Rampur Jattan, Nahan Road, Kala Amb.	Jattan Wala	The unit has provided an ETP comprising of physico-chemical treatment followed by biological treatment, sand and activated carbon filter.	Reused in Gardening
25	Sheela Foam.	Nahan Road, Kala Amb.	Jattan Wala	There is no process effluent. However the unit has provided the STP for the treatment of domestic sewage and sullage.	Reused in Gardening
26	Shree Krishna Steelage (P) Ltd.	Trilokpur Road Kala Amb.	Jattan Wala	The unit has provided an ETP comprising of physico-chemical treatment followed by dual media filter.	Drain
27	Sidhi Vinayak Industries	Village Johron, Kala Amb	Jattan Wala	The unit has provided an ETP comprising of physico-chemical treatment followed by sand filter, activated carbon filter and evaporator.	Evaporator
28	SNS Corporation Unit-II	Village Rampur Jattan, Nahan Road, Kala Amb	Jattan Wala	The unit has provided an ETP comprising of physico-chemical treatment followed by sand filter, activated carbon filter and RO. The treated water is then reused in the process.	Reused in process
29	Systole Remedies.	Vill. Ogli, Trilokpur Road, Kala Amb.	Jattan Wala	The unit has provided an ETP comprising of physico-chemical treatment followed by biological, sand filter and activated carbon filter.	Reused in Gardening and Wetting of floor
30	Vinay Packaging (Athens Lab)	Village Rampur Jattan, Nahan Road, Kala Amb	Jattan Wala	The unit has provided an ETP comprising of physico-chemical treatment followed by biological, sand filter and activated carbon filter.	Drain
31	Virgo Aluminum	Village Rampur Jattan, Nahan Road, Kala Amb	Jattan Wala	The unit has provided an ETP comprising of physico-chemical treatment followed by biological, sand filter and activated carbon filter.	Drain



Sr. No.	Name of the unit	Address	Area	Treatment Process	Final Mode of Disposal
32	Accura Care Pharmaceuticals (P) Ltd.	Vill. Moginand, Kala Amb.	Moginand	The unit has provided an ETP comprising of physico-chemical treatment followed by biological treatment, sand filter and activated carbon filter.	Drain
33	Blue Star Ltd, Unit-I	Village Moginand, Kala Amb	Moginand	There is no process effluent. However the unit has provided the STP for the treatment of domestic sewage and sullage.	Reused in Gardening
34	Care Cosmetic.	Vill. Moginand Kala Amb	Moginand	The unit has provided an ETP comprising of physico-chemical treatment followed by biological treatment, sand and activated carbon filter.	Reused in Gardening
35	Elnova Pharma.	Village Moginand, Kala Amb.	Moginand	The unit has provided an ETP comprising of physico-chemical treatment followed by biological treatment, sand and activated carbon filter.	Drain
36	Gnosis Pharma.	Vill. Moginand Kala Amb.	Moginand	The unit has provided an ETP comprising of physico-chemical treatment followed by biological treatment, sand and activated carbon filter.	Reused in Gardening
37	Indkus biotech india	Village moginand, Kala Amb	Moginand	The unit has provided an ETP comprising of physico-chemical treatment followed by sand and activated carbon filter.	Drain
38	Indo Rama Engineers	Village Moginand, Kala Amb	Moginand	The unit has provided an ETP comprising of physico-chemical treatment followed by biological treatment, sand and activated carbon filter.	Drain
39	Integrated Lab.	Moginand Kala Amb.	Moginand	The unit has provided a common ETP for 2 sister concerns comprising of physico-chemical treatment followed by biological treatment and multimedia filter.	Reused in Gardening/Flushing
40	Welcure Remedies	Moginand Kala Amb.	Moginand		
41	KAG Industries	Village Moginand, Kala Amb	Moginand	The unit has provided an ETP comprising of physico-chemical treatment followed by biological treatment and multimedia filter. The unit was directed to obtain NOC from HP Ground Water Authority for extraction of ground water, provided flow meter at the outlet of ETP and maintain the logbook properly.	Drain



Sr. No.	Name of the unit	Address	Area	Treatment Process	Final Mode of Disposal
42	Konark Enterprises.	Vill. Moginand Kala Amb	Moginand	The unit has provided an ETP comprising of physico-chemical treatment followed by biological treatment, sand and activated carbon filter.	Reused in Gardening
43	Konark Fixtures	Village Moginand, Kala Amb	Moginand	The unit has provided an ETP comprising of physico-chemical treatment followed by biological treatment, sand and activated carbon filter.	Reused in Gardening, cooling tower and toilet flushing
44	Konark Herbal & Health Care	Village Moginand, Kala Amb	Moginand	The unit has provided an ETP comprising of physico-chemical treatment followed by biological treatment, sand and activated carbon filter.	Reused in Gardening
45	Konark Poducts	village Moginand, Kala amb	Moginand	The unit has provided an ETP comprising of physico-chemical treatment followed by biological treatment, sand and activated carbon filter.	Reused in Flushing and Gardening
46	Medisys Biotech Private Limited.	Moginand, Kala Amb.	Moginand	The unit has provided an ETP comprising of physico-chemical treatment followed by biological treatment, sand and activated carbon filter.	Reused in Gardening
47	Phoenix Udyog.	Kala Amb, Distt. Sirmour HP.	Moginand	The unit has provided an ETP comprising of physico-chemical treatment followed by sand and activated carbon filter.	Reused in Gardening
48	Pidilite Industry Ltd.,(Unit -I)	Village Moginand, Kala Amb	Moginand	There is no process effluent. However the unit has provided the STP for the treatment of domestic sewage and sullage.	Reused in Gardening
49	Sozin Flora Pharma.	Village Moginand, Kala Amb.	Moginand	The unit has provided an ETP comprising of physico-chemical treatment followed by biological treatment, sand and activated carbon filter.	Reused in Gardening
50	Sunvet Pharma Private Limited.	Village Moginand, Kala Amb.	Moginand	The unit has provided an ETP comprising of physico-chemical treatment followed by biological treatment, sand and activated carbon filter.	Reused in Gardening
51	Indo Phyto Chem	Mauza Rampur Jattan, Nahan Road, Kala Amb	Moginand	The effluent generated is evaporated in the steam evaporator	Evaporator
52	Alfa Remedies	Suketi Road Kala Amb	Suketi Road	The unit has provided an evaporator.	Evaporator
53	Biologic Inc.	Vill. Ogli, Suketi Road, Kala Amb.	Suketi Road	The unit has provided an evaporator. The unit was directed to obtain NOC from HP State Ground Water Authority for extraction of Ground Water and provide	Evaporator

Sr. No.	Name of the unit	Address	Area	Treatment Process	Final Mode of Disposal
				a flow meter at the borewell.	
54	Insight Soft Labz	Suketi Road Kala Amb	Suketi Road	The unit has provided an ETP comprising of physico-chemical treatment followed by dual media filter. The unit was directed to provide flow meter at the outlet of ETP and properly maintain its record.	Reused in Gardening
55	Protech Telink	Suketi Road Kala Amb	Suketi Road	The unit has provided an ETP comprising of physico-chemical treatment followed by biological treatment, sand filter and activated carbon filter. The unit was directed to properly maintain the logbook.	Drain
56	Shivam Enterprises	Suketi Road Kala Amb	Suketi Road	The unit has provided an ETP comprising of physico-chemical treatment followed by biological treatment, sand filter and activated carbon filter. The unit was directed to obtain NOC from HP State Ground Water Authority for extraction of Ground Water and provide a flow meter at the borewell.	Reused in Gardening
57	Symboisis Pharmaceuticals.	Suketi Road, Kala Amb.	Suketi Road	The unit has provided an ETP comprising of physico-chemical treatment followed by biological treatment, sand filter and activated carbon filter. The unit was directed to label the components and properly maintain the logbook.	Drain
58	Candour Pharmaceuticals	Suketi Road, Kala Amb.	Suketi Road	The unit has provided an ETP comprising of physico-chemical treatment followed by biological treatment and dual media filter. The unit was directed to obtain NOC from HP State Ground Water Authority for extraction of Ground Water and provide a flow meter at the bore well.	Reused in flushing
59	Algen Healthcare.	Sadhora Road, Kala Amb (Near SPT Industries)	Sadhora Road	The unit has provided an ETP comprising of physico-chemical treatment followed by sand filter, activated carbon filter and evaporator. The unit was directed to properly maintain the logbook.	Evaporator
60	Aqua Parental	Village Khari, Sadhora Road, Kala Amb	Sadhora Road	The unit has provided an ETP comprising of physico-chemical treatment followed by biological treatment, sand filter and activated carbon filter. The unit was directed to obtain NOC from HP State Ground Water Authority for extraction of Ground Water.	Drain

Sr. No.	Name of the unit	Address	Area	Treatment Process	Final Mode of Disposal
61	Himachal Polyfins.	Village Khari, Sadhora Road, Kala Amb.	Sadhora Road	The unit has provided an ETP comprising of physico-chemical treatment. The unit was directed to properly maintain the logbook.	Reused in process and gardening
62	Orison Pharma International.	Vill. Ogli, Sadhora Road, Kala Amb	Sadhora Road	The unit has provided an ETP comprising of physico-chemical treatment followed by biological treatment, sand filter and activated carbon filter. The unit was directed to obtain NOC from HP State Ground Water Authority for extraction of Ground Water.	Drain
63	Primus Pharmaceutical	Village Kheri, Sadhora Road, Kala Amb	Sadhora Road	The unit has provided an ETP comprising of physico-chemical treatment followed by biological treatment, sand filter and activated carbon filter.	Reused in Gardening and floor washing
64	SPT Industries	Village Ogli, Sadhora Road, Kala Amb	Sadhora Road	The unit has provided an ETP comprising of physico-chemical treatment followed by dual media filter. The unit was directed to provide flow meter at the outlet of ETP.	Reused in Gardening
65	UB Bisucits Pvt. Ltd.	Village Khari, Sadhora road, Kala Amb	Sadhora Road	The unit has provided an ETP cum STP comprising of physico-chemical treatment followed by biological treatment, sand filter and activated carbon filter. The unit was directed to label the components of ETP and provide a flow chart of the same.	Reused in Gardening
66	JMM Laboratories	Sadhora Road Kala Amb.	Suketi Road	The unit has provided an ETP comprising of physico-chemical treatment followed by biological treatment, sand filter and activated carbon filter. The unit was directed to provide a flow meter at the outlet of ETP and maintain the logbook.	Drain
67	Digital Vision.	Village Ogli, Kala Amb	Ogli	The unit has provided an ETP comprising of physico-chemical treatment followed by sand and activated carbon filter.	Reused in road wetting
68	Helpzyn Pharma	Nahan Road, Kala Amb.	Ogli	The unit has provided an ETP comprising of physico-chemical treatment followed by sand filter, activated carbon filter and an evaporator.	Evaporator
69	Iskon Remedies.	Village Ogli, Nahan Road, Kala Amb.	Ogli	The unit has provided an ETP comprising of physico-chemical treatment followed by sand filter, activated carbon filter and an evaporator.	Drain
70	Myron Industries	Village Ogli, Nahan Road, Kala Amb	Ogli	The unit has provided an ETP comprising of physico-chemical treatment followed by sand filter and activated carbon filter.	Drain

Sr. No.	Name of the unit	Address	Area	Treatment Process	Final Mode of Disposal
71	Progressive Industries	Village Ogli, Nahan Road, Kala Amb	Ogli	The unit has provided an ETP comprising of physico-chemical treatment followed by sand filter and activated carbon filter.	Reused in gardening
72	Vashishat Chemical.	Nahan Road Kala Amb.	Ogli	The unit has provided settling tanks for the treatment of waste water.	Reused in process
73	Events Corporation, Unit-II	Village Ogli, Nahan Road, Kala Amb	Ogli	The unit has provided an evaporator for the disposal of effluent generated.	Evaporator
74	Bimal Industries unit-II	IA kala amb	Khairi	The unit has provided an ETP comprising of physico-chemical treatment followed by sand filter, activated carbon filter and RO System.	Reused in process
75	Bothra Metals & Alloys.	Vill. Kheri, Trilokpur Road, Kala Amb.	Khairi	The unit has provided an ETP comprising of physico-chemical treatment followed by sand filter and activated carbon filter.	Drain
76	CBM Industries.	Village Kheri, Trilokpur Road, Kala Amb.	Khairi	The unit has provided an ETP comprising of physico-chemical treatment.	Drain
77	GMT Machine Tools	Village Johron, Kala Amb	Khairi	The unit has provided an ETP comprising of physico-chemical treatment followed by biological treatment, sand filter and activated carbon filter.	Drain
78	Grampus Laboratories.	Vill. Johoron, Kala Amb.	Khairi	The unit has provided an ETP comprising of physico-chemical treatment followed by sand filter and activated carbon filter.	Drain
79	Him Sagar Laboratories.	Village Kheri, Trilokpur Road, Kala Amb.	Khairi	The unit has provided an ETP comprising of 27 physico-chemical treatment followed by dual media filter.	Reused in Gardening
80	JHS Svendgard Laboratories ltd.	Village Kheri, Trilokpur Road, Kala Amb.	Khairi	The unit has provided an ETP comprising of 27 physico-chemical treatment followed by biological treatment, sand filter and activated carbon filter.	Reused in Gardening
81	MBC Industries	Kala Amb	Khairi	The unit has provided an ETP comprising of 27 physico-chemical treatment followed by biological treatment, sand filter and activated carbon filter.	Reused in Gardening
82	MK Auto Clutch Co.	Villahe Kheri, Kala Amb	Khairi	The unit has provided an ETP comprising of 27 physico-chemical treatment followed by sand filter and activated carbon filter. The unit was directed to label the components of ETP and properly maintain the logbook.	Reused in Gardening
83	Oyster Pharma.	Plot No. 35, IA, Kala Amb.	Khairi	The unit has provided an ETP comprising of Physico Chemical Treatment.	Drain
84	Pioneer Embroideries.	Vill. Kheri, Kala Amb.	Khairi	There is no process effluent. However the unit has provided the STP for the	Reused in Gardening

Sr. No.	Name of the unit	Address	Area	Treatment Process	Final Mode of Disposal
				treatment of domestic sewage and sullage.	
85	Pashupati Spinning & Weaving Mills.	Village Kheri, Trilokpur Road, Kala Amb.	Khairi	The unit has provided an ETP comprising of 28 physico-chemical treatment followed by biological treatment, sand filter and activated carbon filter. The unit was directed to provide flow meter at the outlet of ETP.	Drain & Partially reused in gardening
86	Pushkar Pharma.	Village Kheri, Meerpur Road, Kala Amb.	Khairi	The unit has provided an ETP comprising of 28 physico-chemical treatment followed by biological treatment, sand filter and activated carbon filter.	Reused in road wetting
87	Sai Corporation	Village Johron, Kala Amb	Khairi	The unit has provided an ETP comprising of 28 physico-chemical treatment followed by biological treatment, sand filter and activated carbon filter.	Reused for irrigation
88	Sai Tech Pharmaceuticals.	Vill. Kheri Trilokpur Road, Kala Amb	Khairi	The unit has provided an ETP comprising of 28 physico-chemical treatment followed by biological treatment and dual media filter.	Drain
89	Shivom Cotspin Ltd.	Vill. Kheri Kala Amb.	Khairi	There is no process effluent. However the unit has provided the STP for the treatment of domestic sewage and sullage.	Reused in Gardening & Wetting of road
90	SPK Wire Products P. Ltd	Village Kheri, Trilokpur Road, Kala Amb	Khairi	The unit has provided an ETP comprising of 28 physico-chemical treatment followed by nickel reduction through ion exchange.	Reused in process
91	Vanessa Cosmetics.	Ind. Area Kala Amb.	Khairi	The unit has provided an ETP comprising of 28 physico-chemical treatment followed by dual media filter and evaporator.	Evaporator
92	Varav Biogenesysis P. Ltd	Village Johron, Kala Amb	Khairi	The unit has provided an ETP comprising of 28 physico-chemical treatment followed by biological treatment, sand filter and activated carbon filter.	Drain
93	Vidyasha Pharmaceuticals	Village Johron, Kala Amb	Khairi	The unit has provided dual media filter followed by evaporator.	Evaporator
94	Indo Herbal Extractions	Village Meerpur, Kala Amb	Meerpur	The effluent generated is evaporated in the steam evaporator	Evaporator

### 9.3 Status of Consents under Water (Prevention & Control of Pollution) Act, 1974 /Air (Prevention & Control of Pollution) Act, 1981

There are 94 water polluting industries in Kala Amb area. All these industries started production after obtaining the consent to operate of the state board under Water (Prevention & Control of Pollution) Act,

1974 and Air (Prevention & Control of Pollution) Act, 1981. Thereafter all these 94 industries applied for renewal of consent to operate, 91 are having valid Consent under Water (Prevention & Control of Pollution) Act, 1974 and Air (Prevention & Control of Pollution) Act, 1981. The cases of three industries are under process. List of industries along with their consent status have been given in **Table 12**.

**Table 12: Consent Status of Water Polluting Industries in Kala Amb**

Sr. No.	Name of the unit	Address of Unit	Area	Consent Validity
1	Accura Care Pharmaceuticals (P) ltd.	Vill. Moginand, Kala Amb.	Moginand	31.03.2022
2	Adwin Pharma.	Vill. Rampur Jattan, Kala Amb.	Jattan Wala	31.03.2021
3	AGV Fenestration (P) ltd.	Vill. Johron, Kala Amb.	Jattan Wala	31.03.2020
4	Alfa Remedies	Suketi Road Kala Amb	Suketi Road	31.03.2020
5	Algen Healthcare.	Sadhora Road, Kala Amb (Near SPT Industries)	Sadhora Road	31.03.2022
6	Alps Communications	Village Jattan Wala, Trilokpur Road, Kala Amb	Jattan Wala	31.03.2019
7	Aqua Parental	Village Khari, Sadhora Road, Kala Amb	Sadhora Road	31.03.2019
8	Art N Glass, Unit-I	Village Johron, Kala Amb	Jattan Wala	31.03.2021
9	Art-N-Glass unit II	Vill Johron, kala Amb	Jattan Wala	31.03.2021
10	Axsys Solutions	Village Johron, Kala Amb	Jattan Wala	31.03.2021
11	Bimal Industries unit-II	IA kala amb	Khairi	31.03.2020
12	Biologic Inc.	Vill. Ogli, Suketi Road, Kala Amb.	Suketi Road	31.03.2023
13	Blue Star Ltd, Unit-I	Village Moginand, Kala Amb	Moginand	31.03.2025
14	Blue star Ltd, Unit-II	Village Manthapal, Kala Amb	Jattan Wala	31.03.2020
15	Bothra Metals & Alloys.	Vill. Kheri, Trilokpur Road, Kala Amb.	Khairi	31.03.2019
16	BROP	Village Ogli, Trilokpur Road, Kala Amb	Jattan Wala	31.03.2019
17	C S Zircon Product.	Village Rampur Jattan, Trilokpur Road, Kala Amb.	Jattan Wala	31.03.2023
18	Care Cosmetic.	Vill. Moginand Kala Amb	Moginand	31.03.2023
19	CBM Industries.	Village Kheri, Trilokpur Road, Kala Amb.	Khairi	31.03.2019
20	Condour Pharmaceutical	Ogli, Suketi Road Kala Amb	Suketi Road	31.03.2019
21	Digital Vision.	Village Ogli, Kala Amb	Ogli	31.03.2020
22	Elnova Pharma.	Village Moginand, Kala Amb.	Moginand	31.03.2019
23	Events Corporation, Unit-II	Village Ogli, Nahan Road, Kala Amb	Ogli	31.3.2021
24	Five Star Healthcare.	Vill. Ogli, Trilokpur Road, Kala Amb.	Jattan Wala	31.03.2019



Sr. No.	Name of the unit	Address of Unit	Area	Consent Validity
25	Geeta Industries	Vill. Ogli, Trilokpur Road, Kala Amb.	Jattan Wala	31.03.2019
26	GMT Machine Tools	Village Johron, Kala Amb	Khairi	31.03.2022
27	Gnosis Pharma.	Vill. Moginand Kala Amb.	Moginand	31.03.2019
28	Gold Plus Himachal Safety Glass.	Village Johron, Kala Amb	Jattan Wala	31.03.2021
29	Grampus Laboratories.	Vill. Johoron, Kala Amb.	Khairi	31.03.2023
30	Helpzyn Pharma	Nahan Road, Kala Amb.	Ogli	31.03.2021
31	Him Sagar Laboratories.	Village Kheri, Trilokpur Road, Kala Amb.	Khairi	31.03.2021
32	Himachal Polyfins.	Village Khari, Sadhora Road, Kala Amb.	Sadhora Road	31.03.2020
33	Indkus biotech india	Village moginand, Kala Amb	Moginand	31.03.2022
34	Indo Herbal Extractions	Village Meerpur, Kala Amb		31.03.2022
35	Indo Phyto Chem	Mauza Rampur Jattan, Nahan Road, Kala Amb	Moginand	31.3.2022
36	Indo Rama Engineers	Village Moginand, Kala Amb	Moginand	31.03.2021
37	Insight Soft Labz	Suketi Road Kala Amb	Suketi Road	31.03.2019
38	Integrated Lab.	Moginand Kala Amb.	Moginand	31.03.2020
39	Iskon Remedies.	Village Ogli, Nahan Road, Kala Amb.	Ogli	31.03.2023
40	JHS Svendgard Laboratories Ltd.	Village Kheri, Trilokpur Road, Kala Amb.	Khairi	31.03.2019
41	JMM Laboratories	Sadhora Road Kala Amb.	Suketi Road	31.03.2020
42	KAG Industries	Village Moginand, Kala Amb	Moginand	31.03.2019
43	Konark Enterprises.	Vill. Moginand Kala Amb	Moginand	31.03.2019
44	Konark Fixtures	Village Moginand, Kala Amb	Moginand	31.03.2020
45	Konark Herbal & Health Care	Village Moginand, Kala Amb	Moginand	31.03.2019
46	Konark Poducts	village Moginand, Kala amb	Moginand	31.03.2019
47	MBC Industries	Kala Amb	Khairi	31.03.2019
48	Medisys Biotech Private Limited.	Moginand, Kala Amb.	Moginand	31.03.2019
49	MK Auto Clutch Co.	Villahe Kheri, Kala Amb	Khairi	31.03.2021
50	MMG Healthcare.	Vill. Johron Kala Amb.	Jattan Wala	31.03.2022
51	Myron Industries	Village Ogli, Nahan Road, Kala Amb	Ogli	31.03.2019
52	Orison Pharma International.	Vill. Ogli, Sadhora Road, Kala Amb	Sadhora Road	31.03.2020
53	Oscar Remedies	Vill. Johron Kala Amb.	Jattan Wala	31.03.2018 (Applied)

Sr. No.	Name of the unit	Address of Unit	Area	Consent Validity
54	Ovation Remides.	Village Johron, Kala Amb.	Jattan Wala	31.03.2022
55	Oyster Pharma.	Plot No. 35, IA, Kala Amb.	Khairi	31.03.2022
56	Pashupati Spinning & Weaving Mills.	Village Kheri, Trilokpur Road, Kala Amb.	Khairi	31.03.2020
57	Phoenix Udyog.	Kala Amb, Distt. Sirmour HP.	Moginand	31.03.2021
58	Pidilite Industries (Unit-III)	Rampur Jattan, Kala Amb	Jattan Wala	31.03.2019
59	Pidilite Industry Ltd., (Unit-II)	Johoron, Kala Amb, Distt. Sirmour.	Jattan Wala	31.03.2019
60	Pidilite Industry Ltd.,(Unit -I)	Village Moginand, Kala Amb	Moginand	31.03.2021
61	Pioneer Embroideries.	Vill. Kheri, Kala Amb.	Khairi	31.03.2021
62	Primus Pharmaceutical	Village Kheri, Sadhora Road, Kala Amb	Sadhora Road	31.03.2020
63	Progressive Industries	Village Ogli, Nahan Road, Kala Amb	Ogli	31.03.2021
64	Protech Telelinks	Suketi Road Kala Amb	Suketi Road	31.03.2021
65	Pushkar Pharma.	Village Kheri, Meerpur Road, Kala Amb.	Khairi	31.03.2019
66	Rich Gravis Pvt. Ltd	Village Manthapal, Kala Amb	Jattan Wala	31.03.2019
67	Ruchira Papers Ltd. (W & P Unit)	Kala Amb, Distt. Sirmour HP.	Jattan Wala	31.03.2020
68	Ruchira Papers Ltd. (Kraft Unit)	Kala Amb, Distt. Sirmour HP.	Jattan Wala	31.03.2020
69	Saboo Cylinder.	Ind Area Kala Amb.	Jattan Wala	31.03.2020
70	Sagar Katha Factory	Trilokpur Road Kala Amb.	Jattan Wala	31.03.2022
71	Sai Corporation	Village Johron, Kala Amb	Khairi	31.03.2023
72	Sai Tech Pharmaceuticals.	Vill. Kheri Trilokpur Road, Kala Amb	Khairi	31.03.2022
73	Sarv Biolab (P) Ltd.	Village Rampur Jattan, Trilokpur Road, Kala Amb.	Jattan Wala	31.03.2019
74	SBS Biotech. Unit -I	Vill. Rampur Jattan, Nahan Road, Kala Amb.	Jattan Wala	31.03.2023
75	Sheela Foam.	Nahan Road, Kala Amb.	Jattan Wala	31.03.2023
76	Shivam Enterprises	Suketi Road Kala Amb	Suketi Road	31.03.2023
77	Shivom Cotspin Ltd.	Vill. Kheri Kala Amb.	Khairi	31.03.2021
78	Shree Krishna Steelage (P) Ltd.	Trilokpur Road Kala Amb.	Jattan Wala	31.03.2019
79	Sidhi Vinayak Industries	Village Johron, Kala Amb	Jattan Wala	31.03.2018 (Applied)
80	SNS Corporation Unit-II	Village Rampur Jattan, Nahan Road, Kala Amb	Jattan Wala	31.03.2020

Sr. No.	Name of the unit	Address of Unit	Area	Consent Validity
81	Sozin Flora Pharma.	Village Moginand, Kala Amb.	Moginand	31.03.2020
82	SPK Wire Products P. Ltd	Village Kheri, Trilokpur Road, Kala Amb	Khairi	31.03.2021
83	SPT Industries	Village Ogli, Sadhora Road, Kala Amb	Sadhora Road	31.03.2021
84	Sunvet Pharma Private Limited.	Village Moginand, Kala Amb.	Moginand	31.03.2023
85	Symboisis Pharmaceuticals.	Suketi Road, Kala Amb.	Suketi Road	31.03.2023
86	Systole Remedies.	Vill. Ogli, Trilokpur Road, Kala Amb.	Jattan Wala	31.03.2020
87	UB Bisucits Pvt. Ltd.	Village Khari, Sadhora road, Kala Amb	Sadhora Road	31.03.2021
88	Vanesa Cosmetics.	Ind. Area Kala Amb.	Khairi	31.03.2023
89	Varav Biogenesis Pvt. Ltd	Village Johron, Kala Amb	Khairi	31.03.2023
90	Vashishat Chemical.	Nahan Road Kala Amb.	Ogli	31.03.2020
91	Vidyasha Pharmaceuticals	Village Johron, Kala Amb	Khairi	31.03.2020
92	Vinay Packaging (Athens Lab)	Vill. Rampurjattan, Nahan Road, Kala Amb.	Jattan Wala	31.03.2022
93	Virgo Aluminium	Village Rampurjattan, Kala Amb	Jattan Wala	31.03.2021
94	Welcure Remedies	Moginand Kala Amb	Moginand	31.03.2021

#### 9.4 List of Industries complying/non complying with the Effluent Discharge Standards:

HPSPCB Paonta Sahib has collected 69 samples of different water polluting units from Kala Amb area during October to December, 2018. The results of 52 samples have been received so far. Out of 52 samples, parameters of 5 samples have been found above the prescribed limit. Notices have been issued to the defaulting units. Second samples of the units have been collected and results are awaited from the Lab. The detailed lists of industries along with their compliance status have been tabulated in **Table 13**.

**Table 13: List of Industries complying and non- complying to the effluent discharge norms prescribed under Environment (Protection) Rules, 1986**

Sr. No.	Name of the unit	Area	Type of Industry	Date of Collection of Sample	Compliance Status	Remarks
1	Accura Care Pharmaceuticals (P) ltd.	Moginand	Pharmaceutical Formulation	21.11.2018	Complying	-
2	Adwin Pharma.	Jattan Wala	Pharmaceutical Formulation	03.11.2018	Non Complying	The parameters COD (360 mg/L against prescribed limit of 250 mg/L) and BOD (120 mg/L against prescribed

Sr. No.	Name of the unit	Area	Type of Industry	Date of Collection of Sample	Compliance Status	Remarks
						limit of 30 mg/L) are not confirming to the limit.
3	Aqua Parental	Sadhora Road	Pharmaceutical Formulation	12.12.2018	Non Complying	The parameters COD (272 mg/L against prescribed limit of 250 mg/L) and BOD (108 mg/L against the prescribed limit of 30 mg/L) are not confirming to the limit.
4	Art N Glass, Unit-I	Jattan Wala	Glass Unit	30.10.2018	Complying	-
5	Art-N-Glass unit II	Jattan Wala	Glass Unit	30.10.2018 & 15.12.2018	Complying	The parameter TSS (146 mg/L against the prescribed limit of 100 mg/L) was not confirming to the limit during first sampling. Second sample of the unit was collected on 15.12.2018 and is complying to the norms.
6	Axsys Solutions	Jattan Wala	Metal Finishing	30.10.2018 & 15.12.2018	Complying	For irrigation norms.
7	Bimal Industries unit-II	Khairi	Metal Finishing	01.11.2018	Complying	-
8	Blue Star Ltd, Unit-I	Moginand	STP	03.11.2018	Complying	-
9	Blue star Ltd, Unit-II	Jattan Wala	STP	26.10.2018	Complying	-
10	C S Zircon Product.	Jattan Wala	Miscellaneous Chemicals	03.11.2018	Complying	-
11	Care Cosmetic.	Moginand	Cosmetics	15.12.2018	Complying	-
12	Elnova Pharma.	Moginand	Pharmaceutical Formulation	21.11.2018	Complying	-
13	Five Star Healthcare.	Jattan Wala	Pharmaceutical Formulation	16.11.2018	Complying	-
14	Geeta Industries	Jattan Wala	Metal Finishing	01.11.2018	Complying	-
15	General Machine Tools	Khairi	Pharmaceutical Formulation	30.10.2018	Complying	-
16	Gold Plus Himachal Safety Glass.	Jattan Wala	Glass Unit	01.11.2018	Complying	-

Sr. No.	Name of the unit	Area	Type of Industry	Date of Collection of Sample	Compliance Status	Remarks
17	Grampus Laboratories.	Khairi	Pharmaceutical Formulation	16.10.2018	Complying	-
18	Himachal Polyfins.	Sadhora Road	Lime & Chemicals	12.12.2018	Complying	-
19	Indkus biotech india	Moginand	Pharmaceutical Formulation	22.11.2018	Complying	The parameters COD(1248 mg/L against prescribed limit of 250 mg/L), BOD (680 mg/L against prescribed limit of 30 mg/L) and TSS (153 mg/L against prescribed limit of 100 mg/L) were observed in the first sampling, However the unit has installed an evaporator thus ensuring zero discharge from the unit.
20	Indo Rama Engineers	Moginand	Pharmaceutical Formulation	21.11.2018	Complying	-
21	JHS Svendgard Laboratories Ltd.	Khairi	Cosmetics	13.12.2018	Complying	-
22	Konark Herbal & Health Care	Moginand	Pharmaceutical Formulation	22.11.2018	Complying	-
23	MMG Healthcare.	Jattan Wala	Pharmaceutical Formulation	30.10.2018	Complying	-
24	Myron Industries	Ogli	Metal Finishing	30.11.2018	Non Complying	The parameter TSS (122 mg/L against the prescribed limit of 100 mg/L) is not confirming to the limit.
25	Orison Pharma International.	Sadhora Road	Pharmaceutical Formulation	12.12.2018	Non Complying	The parameters COD(496 mg/L against prescribed limit of 250 mg/L), TSS (112mg/L against prescribed limit of 100 mg/L) and BOD (340 mg/L against the prescribed limit of 30 mg/L) are not confirming to the limit.
26	Ovation Remides.	Jattan Wala	Pharmaceutical Formulation	01.11.2018	Complying	-

Sr. No.	Name of the unit	Area	Type of Industry	Date of Collection of Sample	Compliance Status	Remarks
27	Pashupati Spinning & Weaving Mills.	Khairi	Spinning & Dyeing	16.10.2018 & 13.12.2018	Complying	-
28	Phoenix Udyog.	Moginand	Metal Finishing	28.11.2018	Complying	-
29	Pidilite Industries (Unit-III)	Jattan Wala	Miscellaneous Chemicals	01.11.2018	Complying	-
30	Pidilite Industry Ltd., (Unit-II)	Jattan Wala	Miscellaneous Chemicals	16.10.2018	Complying	-
31	Pidilite Industry Ltd.,(Unit -I)	Moginand	STP	22.11.2018	Complying	-
32	Pioneer Embroideries.	Khairi	STP	13.12.2018	Complying	-
33	Progressive Industries	Ogli	Metal Finishing	30.11.2018	Complying	-
34	Rich Gravis Pvt. Ltd	Jattan Wala	Food Products	26.10.2018	Complying	-
35	Ruchira Papers Ltd. (W & P Unit)	Jattan Wala	Pulp and Paper	01.11.2018 & 15.12.2018	Complying	-
36	Saboo Cylinder.	Jattan Wala	Metal Finishing	16.11.2018	Non Complying	The parameters COD (736 mg/L against prescribed limit of 250 mg/L), TSS (119 mg/L against prescribed limit of 100 mg/L) and Total Iron (8.68 mg/L against the prescribed limit of 3 mg/L) are not confirming to the limit.
37	Sagar Katha Factory	Jattan Wala	Katha Factory	16.10.2018	Complying	
38	Sai Corporation	Khairi	Cosmetics	13.12.2018	Complying	
39	SBS Biotech. Unit -I	Jattan Wala	Pharmaceutical Formulation	27.10.2018	Complying	For irrigation norms.
40	Sheela Foam.	Jattan Wala	STP	27.10.2018	Complying	-
41	Shivom Cotspin Ltd.	Khairi	STP	05.12.2018	Complying	-
42	Shree Krishna Steelage (P) Ltd.	Jattan Wala	Metal Finishing	16.11.2018	Complying	-



Sr. No.	Name of the unit	Area	Type of Industry	Date of Collection of Sample	Compliance Status	Remarks
43	Sidhi Vinayak Industries	Jattan Wala	Pharmaceutical Formulation	30.10.2018	Complying	The parameters COD (492 mg/L against prescribed limit of 250 mg/L) and BOD (70 mg/L against prescribed limit of 30 mg/L) were observed in the first sampling. However now the unit has installed the evaporator thus ensuring zero discharge from the unit.
44	SNS Corporation Unit-II	Jattan Wala	Metal Finishing	22.11.2018	Complying	-
45	UB Bisucits Pvt. Ltd.	Sadhora Road	Food Products	15.12.2018	Complying	-
46	Vashishat Chemical.	Ogli	Lime & Chemicals	30.11.2018	Complying	-
47	Vinay Packaging (Athens Lab)	Jattan Wala	Pharmaceutical Formulation	27.10.2018	Complying	-
48	Virgo Aluminium	Jattan Wala	Metal Finishing	27.10.2018	Complying	-

### 9.5 List of Total No. of Industries located in Kala Amb Area

List of total no. of industries in Kala Amb area has been given in **Table 14**.

Table 14 Total No. of Industries in Kala Amb		
Sr. No.	Name of Industry	Address of Industry
1	A J Infrastructure Pvt.Ltd.	Village Moginand, Nahan Road, Kala Amb,
2	A R Industries	Village Moginand, Kala-Amb, Tehsil Nahan (HP)
3	Aashna Packers Pvt. Ltd	Village Mainthapal, Nahan Road Kala Amb
4	Accura Care Pharmaceuticals (P) Ltd	Kala Amb Tehsil Nahan Distt Sirmour---Kala Amb
5	Adinath Enterprises	Vill. Mainthapal, Nahan Road, Kala Amb Near Hotel Ashwin Kala Amb
6	Aditya Industries	Village Rampur Jattan Nahan Road Kala Amb---Kala Amb
7	Adwin Pharma	Village Rampur JattanKala Amb, Tehsil NahanKala Amb
8	Aegis Precision Pvt. Ltd	Rampur jattan Kala amb

9	Aggarwal Flour Mills	Village Mainthapal Nahan Road Kala Amb--Kala Amb
10	Aggarwal Glass Works	Village Johron, Kala Amb
11	Agrim International	Village Moginand, Kala Amb
12	AGV Fenestration (P) Ltd	Village Rampur Jattan Indl Area Kala Amb---Rampur Jattan
13	Akhil Enterprises	Village Johron, Trilokpur RoadKala Amb, Distt. Sirmour Johron
14	Alfa Remedies	Village Nagal Saketi Road Kala Amb--Kala Amb
15	Alfa Containers	Village Rampur Jattan,Nahan Road,Kala AmbTehsil NahanRampur Jattan
16	Algen Healthcare Ltd.	Vill. Khara-Kheri, Kala-Amb,Tehsil Nahan, Distt.Sirmour (H.P.)Khara-Kheri
17	Alps Communication(P)ltd	TRILOKPUR ROAD,JOHRON,KALA-AMB---KALA-AMB
18	Alutech Industries(Formerlygurind System Pvt. Ltd.)	village Johron, Trilokpur Road,Kala Amb_Kala Amb
19	Amba Shakti Ispat Ltd	Plot No-6 Industrial Area Phase-II Kala Amb---Kala Amb
20	Amba Industrial Corporation(Unit	Trilokpur Road Kala-amb-----Kala-Amb
21	Amba Metals	Kala Amb Industrial area Phase-II--Kala Amb
22	Ambica Alloys	Plot No-5 Phase-II Industrial Area Tirlokpur Road---Kala amb
23	Amm Engineering Works	Nahan Road , Moginand Kala Amb--Kala Amb/Moginand
24	Amm Engineering Works (Unit-Ii)	Village Ogli Kala AmbTehsil \Nahan Distt. SirmourKala Amb
25	Anand Packagers	Suketi Road, Kala Amb
26	Angad Enterprises	Vill-Rampur-Jattan, Trilokpur Road,Kala-Amb---Kala-Amb
27	Anjali Polyplast Pvt.Ltd.	Trilokpur RoadKala-Amb,Tehsil Nahan, Distt.Sirmour (H.P.)Trilokpur Road
28	Anmol Polymers Pvt Ltd	Industrial Area Trilokpur RoadKala Amb
29	AP Product	Saketi Road kala Amb---KalaAmb/Saketi
30	Aqua Parentral	KALA AMB,TEHSIL NAHANDISTT:SIRMOUR HPKALA AMB
31	Artex Industries	Village Ogli, Kala Amb
32	Art-N Glass Inc	Village Johron PO Kala Amb---Johron
33	Art-N-Glass Inc., Unit-II	Village Johron, P.O Kala AmbTehsil Nahan, Distt. sirmourKala Amb
34	Arun Associate	Suketi Road Kala Amb
35	Arya Publishing Company	Village Johron,P.O Kala AmbTehsil Nahan,Distt. Sirmour

36	Ashwin Hotel (A Unit Of Of Osho Farms Of Hotels)	Vill-Mainthapal,kala-amb,Distt-Sirmour(H.P)
37	Associates Non Wovens Div-I	Village Moza Ogly, Suketi Road, Kala Amb
38	Associates Non Wovens Div-II	Village Moza Ogly, Suketi Road, Kala Amb (H.P)
39	Associates Non Wovwns Div-III	Village Moza Ogly, Suketi Road, Kala Amb (H.P)
40	Aum Udyog	Plot No. 39 & 40Plot No. 39 & 40 , Industrial Area, Kala Amb
41	Avalon Cosmetics(P) Limited Formerly Wave Hygiene Products	Village Kheri,Trilokpur Road,Kala AmbTehsil Nahan Distt. Sirmour
42	Avichal Publishing Company Unit-II	Kala Amb Tehsil Nahan,Distt. SirmourKala Amb
43	Avichal Publishing Unit-I	I.A Trilokpur road, Kala AmbTehsil NahanKala Amb
44	Axsys Solutions	Village Johron, Kala Amb
45	Ayush Herbal & Healthcare	Village kheri, trilokpur road kala Amb--Nagal Suketi
46	B.R. Extrusion	Village Johron Kala Amb Teh Nahan
47	B.R. Agrotech Ltd., (Packaging Unit-Iii)	Vill.Kheri, Trilokpur Road, Kala-Amb, Distt. Sirmour, (H.P.)
48	Bala Sundri Gases Pvt Ltd.	village - Kheri, Trilokpur Road-Kheri
49	Becon Pipes	Vill. Johron, Kala-Amb-Kala-Amb
50	Bimal Industry Unit-II	Village Johron,Industrial area Kala Amb-- Johron
51	Biologic Inc	Suketi road kala amb
52	Biomed Instrument Industries	Vill. Ogli Kala-Amb Ogli
53	Biyani & Sons	166,Rampur Jattan, Kala Amb
54	Blue Star Limited (Unit-II)	Village Ogli Nahan Road Kala Amb
55	Blue Star Ltd	Village Rampur Jattan Nahan Road Kala Amb
56	Bothra Metals & Alloys Pvt. Ltd.	Village- Khari, Trilokpur Road, Kala-Amb, Dist- Sirmour (HP)
57	Bright Sports Shoes Mfg. Company	Trilokpur Road, Kala Amb,Tehsil Nahan--Kala Amb
58	Brit Life Science	Village Sainwala, Kala Amb
59	C.B.M Industries	Village Kheri,trilokpur road,kala Amb--Kala Amb
60	C.S Zircon Products Pvt. Ltd.,( Unit-Iii)	Village Barma Papri , Kala AmbTehsil Nahan , Distt. SirmourKala Amb
61	Candour Pharmaceuticals	Mauza Ogli Suketi Road, Kala Amb
62	Care Cosmetics	Behind Patwar Bhawan Village Moginand Distt Sirmour ---Moginand

63	Chanda G Minerals & Chemicals	Mauza Ogli, Nahan Road, Kala Amb--Kala Amb
64	Chanshal Hills Traders	Suketi road, Kala Amb, Tehsil Nahan, ----Suketi
65	Chaudhary Yatri Niwas	Village Suketi, Kala Amb
66	Chechi Engineering Workshop	Village Johron, Kala Amb-Johron
67	Climatrol Corporation	Vill Mainthapal, Kala-Amb
68	Coninental Furnitures Pvt. Ltd	Mouza Ogli, Sadhura Road, Kala Amb Tehsil Nahan
69	Conscaff India	Vill. Manthap, Kala-Amb, Tehsil Nahan, Distt. Sirmour (H.P.)
70	Continental Telepower Ind. Ltd	Manthapal, Nahan Road Kala Amb Kala Amb
71	Deep Drawn Technologies	Village Rampur Jattan Kala Amb Teh Nahan --Kala Amb
72	Deepak Agro Industries-Ii	Vill Johron, Near Gurind Glass, Kala Amb-Kala Amb
73	Deewal Gramudyog Sansthan	Village Ogli, P.O Kala Amb Khera Street, Trilokpur Road Kala Amb
74	Dhara Enterprises	Village Ogli, Kala Amb
75	Digital Vision	Mouza Ogli, Kala Amb-----Kala Amb
76	Divisa Herbal Care	Kala Amb , Tehsil Nahan Distt. Sirmour Kala Amb
77	Durga Products (Unit-II)	Village Rampur Jattan, Kala Amb--Rampur jattan
78	Ekta Enterprises	Trilokpur Road, Industrial Area, Kala-Amb, Distt. Sirmour (H.P.)
79	Elnova Pharma	Village Moginand Teh Nahan Distt Sirmour
80	Ericsson Cable Industries	Village Moginand, Kala Amb
81	Ess-Ar Xlp Cable Corporation	Village Moginand, Nahan Road, Kala Amb Moginand
82	Events Corporation Unit-II	Vill. Ogli, Kala-Amb, Tehsil Nahan, Distt. Sirmour (H.P.)-----Ogli
83	Fedders Electric And Engineering Ltd ( Formerly Fedders Lloyd Corp. Ltd)	Village Suketi Road Kala Amb--Kala Amb
84	Fila Packaging	Plot No. 42-B, IA Johron, Kala Amb--Johron
85	Five Star Healthcare	Trilokpur road Kala Amb, Tehsil Nahan---Kala Amb
86	Future Choice Containers	VPO - Khairi, Tehsil - Rajgarh-Kahiri
87	G. Tech Slicing Pvt. Ltd	Mauja Ogli Trilokpur Road Kala Amb -Ogli
88	G.M Enterprises (Unit-I)	Dhakwala-Moginand, Tehsil Nahan Distt. Sirmour Kala Amb
89	G.M. Enterprises Unit II	Village Johron, Kala Amb

90	G.S Castings	Industrial Area, Kala Amb Tehsil Nahan Kala Amb
91	Ganga Plasto Pack	vill. ogli, near m/s media master, kala amb -kala amb
92	Geeta Industries	Village Johron, Kala Amb
93	Genpure Zheng Filters (P) Ltd.	Ind. Area, Kala-Amb, Distt.Sirmour (H.P.)-----Kala-Amb
94	Genral Machine Tools	Village Johron, Kala Amb
95	Giriver Decor	Village Rampur, Jattan, Kala Amb---Rampur Jattan
96	Global Coatings	Village Rampur Jattan, P.O. Kala Amb Teh. Nahan, Distt. Sirmaur (HP) Kala Amb
97	Global Devices(A Unit Of Rail Anchor India Pvt Ltd)	Village Ogli Kala Amb Distt. Sirmour H.P
98	Global Sinage	Village Ogli, Kala Amb
99	Gnosis Pharmaceuticals (P) Ltd	Village Moginand Kala Amb Teh Nahan ---Kala Amb
100	Godwin Developers	Trilokpur road, Vill. Kheri, near M/s Case Cold --Kala Amb
101	Gold Plus Himachal Safety Glass Ltd	Village Johron Kala Amb Distt Sirmour--Kala Amb
102	Golden Hari Har Fab (P) Ltd,	Village Kheri, Trilokpur Road Kala Amb Kheri
103	Golden Terry Fab (P) Ltd	Village Kheri, Trilokpur Road Kala Amb Kheri
104	Gomti Non Woven Fabric	Trilokpur Road, Kala-Amb, Tehsil Nahan, Distt.Sirmour (H.P.) Kala Amb
105	Grampus Laboratories	Village Johron, Kala Amb Tehsil Nahan Nahan
106	Grand International	Trilokpur road, Kala Amb, Distt. Sirmour--Kala Amb
107	Green Fenestration Technologies	Village Johron, Tehsil Nahan Distt. Sirmour Kala Amb Kala Amb
108	Gujarat Print Pack Publication Ltd	Village Ogli, Nahan Road, Kala Amb
109	Gupta Glass Industries	Village Meerpur Gurudwara, PO Trilokpur, Kala Amb
110	Guru Kirpa Enterprises	Trilokpur Road, Kala Amb, Village Kheri Kala Amb, Distt. Sirmour Kala Amb
111	Guru Kirpa Tex Fab	Village Kheri Kala Amb Distt. Sirmour Kala Amb
112	Guru Plastic Industries	Village Johron, Kala Amb
113	Gurudev Industries	Trilokpur Road, Tehsil Nahan, Distt. Sirmour (H.P.)----- Trilokpur
114	Harsh Enterprises	Village Rampur Jattan, Trilokpur Road, Kala Amb Rampur Jattan
115	Haryana Conductors (P) Ltd	Village Moginand Kala Amb Teh Nahan--Kala Amb

116	Helpzyn Phartmaceuticals	Village Meerpur Gurudwara, PO Trilokpur Meerpur Gurudwara
117	Him Imperial Auto Glass Works	Vill. Meerpur Kotla, Thesil Nahan-Kala Amb
118	Him Sagar Laboratories Ltd.	Village Kheri, Trilokpur Road Kala Amb--Kala Amb
119	Himachal Aromatics	Village Johron Kala Amb
120	Himachal Packers	Village Meerpur Gurudwara, PO Trilokpur, Kala Amb
121	Himachal Polyolefins Limited	Village Ogli Yamuna Nagar Road Kala Amb--Kala Amb
122	Himachal Safety Glass India Pvt. Ltd.	Village Johron, P.O Kala Amb Tehsil Nahan, Distt. Sirmour Nahan
123	Himachal Terepene Products Pvt. Ltd.	Village Mainthapal Nahan Road Kala Amb--Kala Amb
124	Himalyan Agro Industries	Meerpur Gurudawara, PO trilokpurnear himachal packer, radha krishnankala amb
125	Himgiri Beverages	Village Meerpur Kotlavia Barma Papri, Kala Amb Kala Amb
126	Hi-Tech Industries	Trilokpur Road, Kala Amb Village Kheri Kala Amb
127	Hitech Mineral Industries	Village Ogli - Kala Amb Teshil Nahan Kala Amb
128	HM Steels Ltd	Tirlokpur Road Kala Amb -----Kala Amb
129	Hotel Natraj	Nahan Road, Kala Amb Tehsil Nahan Kala Amb
130	Hotel Renaissance	Mouza Ogli, Nahan Road Kala Amb Distt. Sirmour Kala Amb
131	Hotel Ritvik	Village Manthapal, Nahan Road Kala Amb Manthapal
132	Hotel Satyam	Vill. Mainthapal, Rampur Jattan, Kala Amb Near/ M/s Virgo Industries, Mainthapal Kala Amb Kala Amb
133	Ideal Strips	Moginand, Kala Amb, Th. Nahan, Distt. Sirmour---- Moginand, Kala Amb
134	Idealpet Industries Private Limited	Khasra No NO. 33/23- Near Gram Panchayat Bhawan
135	Imperial Auto Safety Glass Kala Amb	Tirlokpur Road Kala Amb Teh Nahan --Kala Amb
136	Indkus Bio Tech ( India)	Village Moginand Teh Nahan --Kala Amb
137	Indo Herbal Extractions	Mauza Meerpur Gurdwara P.O Trilokpur Kala Amb, Tehsil Nahan Kala Amb
138	Indo Phyto-Chem Pharmaceuticals	Village Rampur Jattan, Village Moginand ---Kala Amb
139	Indo Rama Packers	Village Mainthapal Nahan Road Kala Amb--Kala Amb



140	Indo-Rama Engineers	Vill.Rampur Jatt, Kala-Amb,Tehsil Nahan, Distt.Sirmour(H.P.)-----Johron
141	Innovative	Khasra no. 516/412/90, Vill. Nagal Suketi, PO Moginand, Sirmour, H.P.Suketi
142	Insight Soft Labz	Village Johron, Trilokpur Road,
143	Integrated Laboratories Pvt. Ltd.	Vill. Moginand, Nahan Road, Kala-Amb,Distt.Sirmour (H.P.)-----Moginand
144	Ionex Chem Corporation	Village Meerpur GurudwaraTehsil Nahan,SirmourNahan
145	Iskon Remedies	VILLAGE Ogli, KALA AMB TEHSIL NAHAN DISTT. SIRMOUR (H.P.)---KALA AMB
146	J. B. Industries	Plot No. 13- A industrial area Kala Amb-KalaAmb
147	Jagdamba Industries	Trilokpur Road, Kala-Amb, Distt. Sirmour (H.P.)-----Kala Amb
148	Jai Ambay Containers	Village Ogli Kala Amb---Kala Amb
149	Jai Ganesh Containers	Khata Khatoni No.24/38,Khasra No.77/1 Moza Meerpur Gurudwara
150	Jai Industrial Corporation	VILL NAGAL SAKETI
151	Jai Maa Bala Sundri Polymers	Mauza Nagal SuketiPO Moginand, Kala AmbKala Amb
152	Jai Maa Durga Packers	Trilokpur Road, Kala Amb
153	Jai Mata Di Packaging	Village Moginand, Kala Amb
154	Jai Shree Radhey Maa Polymers	Village Moginand, Nahan RoadKala-AmbMoginand
155	Jai Shree Shayam Industries	Vill.Moginand, Kala AmbTehsil NahanMoginand
156	Jainco Footcare	Village Rampur Jattan, Kala Amb
157	Jaiswal Metal Kala Amb	Tirlokpur Road Kala Amb Nahan Distt Sirmour---Kala Amb
158	Jasch Footwears Pvt. Ltd.	Saketi Road,Kala Amb,Tehsil Nahan--Kala Amb
159	Jasmer Packer	Village Johron Tirlokpur Road Kala Amb---kala Amb
160	Jay Aay Alloys	Trilokpur Road Kala Amb Tehsil NahanDistt. SirmourTrilokpur
161	Jb Rolling Mill Limited Unit- 2 ( J.B. Rolling Mill)	Village Johron PO Kala Amb Nahan ---Kala Amb
162	Jb Rolling Mill Limited Unit -3	Tirlokpur Road Kala Amb Tehsil Nahan ----Kala Amb
163	Jhs Svendgaard Hygiene Products Ltd.	Trilokpur road, Kheri , Kala AmbTehsil NahanKheri
164	Jhs Svendgaard Laboratories Limited	Trilokpur Road, kheri,Kala Amb--Kheri
165	Jindal Industries	Village Rampur Jattan, Nahan Road Kala Amb

166	Jk Prestressing Co.	VILLAGE JOHRON KALA AMB H.P.TIRLOKPUR ROAD KALA AMB H.P.JOHRON
167	Jkm India	OGLI NAHAN ROAD KALA AMB H.P.NAHAN ROAD KALA AMBOGLI
168	JMM Formulation (P) Ltd.	Mauza Ogli, Suketi Road, Kala Amb
169	JMM Laboratories	Village Khari, Sadhora Road, Kala Amb
170	Jpd Precision Fastners Pvt. Ltd	Village Khair, Trilokpur Road, Kala Amb
171	Jyoti Enterprises	42, Industrial Area, Kala Amb
172	K K Non Wovens (India)	Village Moginand, Sirmour-Moginand
173	KAG Industries	Village Moginand, Kala-Amb, Tehsil Nahan (HP)--- Moginand
174	Kaizen International	Suketi Road, Kala Amb
175	Kala Amb Resort	Rampur Jattan ,Nahan Road Kala Amb-- Rampur Jattan
176	Kapish Udyog	Vill. Mainthapal, Kala-Amb, Tehsil Nahan, Distt. Sirmour (H.-----Mainthapal
177	Kerro Faucts India (Pvt.) Ltd.	Village Mirpur , PO trilokpur Kala AmbTehsil NahanKala Amb
178	Khillan Deep Inn	Village Kala AmbTehsil NahanNahan
179	Komal Industries	Nahan Road, Village Rampur JattanKala AmbRampur Jattan
180	Konark Enterprises	Village Moginand Tehsil Nahan ---Kala Amb
181	Konark Fixtures Ltd.	Vill. Moginand, Tehsil Nahan,Distt. Sirmour (H.P.)----- Moginand
182	Konark Herbal & Health Care	Vill. Moginand, Tehsil Nahan,Distt. Sirmour (H.P.)----- Moginand
183	Konark Products	Vill. Moginand, Tehsil Nahan,Distt. Sirmour (H.P.)----- Moginand
184	Krishna Packers	Mauza Ogli, Kala Amb
185	Kumar Strips	Nahan Road Kala-Amb----do---Kala-Amb
186	Kurukshetra Automobiles (P) Ltd	Village Moginand, Kala Amb
187	Kwality Products	Trilokpur Road, Kala AmbTehsil NahanKala Amb
188	Lakra Polytex	vill. Ogli, Kala Amb--Nahan
189	Lambda Eastern Telecommunication Ltd.	khasra no. 439/273 - 141Opposit M/s HM Steels, trilokpur road, vill. kheriKala amb
190	LEEL Elecricals Ltd ( Formerly Lloyd Electric & Engineering Limited)	I.A. Kala Amb, tehsil Nahan -Kala Amb
191	Leema Industries	Nahan Road, Kala Amb
192	Louis Industries	KHASRA No. 374/256/1 MOUZA RAMPUR JATTAN

193	Lumax Auto Technologies Ltd.,	Vill.Moginand, Tehsil Nahan,Tehsil Nahan,Distt. Sirmour,H.P.-----Moginand
194	Luxmi Fibres	Meerpur Road, Kala Amb
195	M K Auto Clutch Industries	Village Kala Amb Teh Nahan TRILOKPUR ROAD, KALA AMB ( HP)Kala Amb
196	M.K Autoclutch Co	Village Kheri, Kala Amb,Tehsil Nahan--Kala Amb
197	M\s Sidhant Industrial Cable Industries	Village Ogli , Saketi road Kala AmbTehsil Nahan , Distt. SirmourKala Amb
198	Maa Bhanbhoori Steel & Alloys	Rampur JattanTrilokpur Road, Kala AmbNahan
199	Maa Saraswati Educational Trust	Sadhaura Road, Kala AmbHimachal PardeshKala Amb
200	Magnum Packaging	Vill.Kheri,Tehsil NahanKala-Amb,Distt.Sirmour(H.P.)Kheri
201	Maha Luxmi Aromatics,	Industrial Area Kala Amb, Village JohronKala AmbJohron
202	Manohar Metals	Vill. & Mauja Rampur Jattan, Tehsil NahanDistt. SirmourKala Amb
203	Markanda Yatri Niwas	Manthapal, Nahan Road,Kala AmbManthapal
204	Marvel Enterprises Moginand	Village Moginand Nahan Road Kala Amb---Kala Amb
205	MBC Industries	Village Johron, Kala Amb
206	Medi Concepts	VPO Sainwala, Tehsil Nahan, Distt. Sirmour (HP)Sainwala
207	Medifoil	Village Manthapal, Nahan Road, Kala AmbDistt. Sirmour (HP)Manthapal
208	Medisys Biotech(P) Ltd.	Village Moginand,Kala AmbTehsil Nahan--Moginand
209	Mercury Rubber Mills	NH-72 Moginand,Tehsil Nahan--Moginand
210	Metal Closures Pvt. Ltd.(Unit-II)	Village Moginand,Tehsil NahanDistt. SirmourMoginand
211	Metro Decorative Pvt. Ltd.	Village Ogli Sadhaura Road ,Kala Amb--Kala Amb
212	Micro Mottion India (P) Limited	Vill. Johron Tehsil Paonta Sahib Kala Amb Johron
213	Micro Pet Industries	vill. ogli, kala ambnahan road nead M/s media masterkala amb
214	Micropet Containers Inc.	Nahan-Ogli- Kala Amb
215	MMG Healthcare	Trilokpur Road, Kala-Amb, Distt.Sirmour (H.P.)-----Kala-Amb
216	Mohit Industries	Village Manthappal, Kala AmbNahanManthappal
217	Monosoft Packaging	Vill.KheriTehsil Nahan,Distt.Sirmour,Kala-Amb(H.P.)Kheri

218	Myco Electricals Pvt. Ltd.	kHASRA nO.579/373/256/2, Vill. RAMPUR JATTAN, Po. KALA AMB
219	Myron Industries Unit 1	Village Ogli Kala Amb Teh Nahan Distt Sirmour
220	N K Industries	Suketi Road, Opposit AP Product, Kala Amb--Kala Amb
221	N.G. Polymers	Vill.ogli Tehsil Nahan Distt.Sirmour H.P.Vill.ogli Tehsil Nahan Distt.Sirmour H.P.Ogli
222	Nahan Ferro Alloys & Chemicals (Pvt.) Ltd.	Nahan Road, Kala-Amb, Distt.Sirmour (H.P.)-----Kala-Amb
223	Nahan International	V.P.O. Moginand, Tehsil Nahan, Distt. Sirmour (H.P.)-----Moginand
224	Nariangarh Hotels Pvt. Ltd.	Vill. Ogli, Near Excise office, Nahan Road Kala-Amb-Kala Amb
225	National Plastic Technologies Ltd.	Trilokpur Road,Village JohronKala Amb,Tehsil Nahan,Distt. SirmourKala Amb
226	Neff Appliances Limited	Village Ogli, P.O Kala AmbTehsil NahanKala Amb
227	Nepc India Limited	Village Khairi, Kala Amb
228	New India Contractors & Devlopers Pvt. Ltd.	Vill Moginand,PO Kala Amb, Teh. Nahan, Distt. Sirmour, HP--Kala Amb
229	Nexgen Industries	Village Khairi, Kala Amb
230	Nirankari Lemi Tubes	Village Johron PO Kala Amb Teh Nahan Distt Sirmour---Kala Amb
231	Nixi Laboratries Pvt. Ltd.	Village Khari, Sadhora Road, Kala Amb
232	Nova Lami Boards Pvt. Ltd	Village Rampur Jattan,Nahan Road Kala Amb--Kala Amb
233	NTC Concrete Products	Village Moginand Kala AmbTeh Nahan --Kala Amb
234	Om Industries	Village Meerpur Gurudwara, Trilokpur RoadKala ambMeerpur Gurudwara
235	Optimistic Mould	Suketi Road, Kala Amb--Ogli
236	Orison Pharma International	Tehsil Nahan,Distt. Sirmour--Kala Amb
237	Oscar Remedies	Vill.Johron, Trilokpur Road, Kala-Amb, Distt.Sirmour (H.P.)-----Johron
238	Ovation Remedies	Behind IITT Engg. CollegeTrilokpur Road, Kala-Amb, Distt.Sirmour(H.P.)Kala-Amb
239	Oyster Pharma	INDUSTRIAL AREA---KALA AMB
240	Ozone Architectural Products (Unit-I)	Village Khairi, Trilokpur Road, Kala Amb
241	Ozone Architectural Products Unitt-II	VILLAGE OGLI KALA AMB HPNAHAN ROAD KALA AMBkhari
242	Ozone Overseas Pvt. Ltd.	Village Kheri, P.O Kala Amb----Kala Amb

243	Padmavati Steels Ltd	Village Johron Tirlokpur Road Kala Amb---Kala Amb
244	Panm Biotech Pvt. Ltd	Village - Moginand, Nahan Road, kala Amb-Moginand
245	Param Industries	Trilokpur Raod, Kala AmbDistt. SirmourKala Amb
246	Paramount Tech Feb Industries	Vill. Moginand Teh.Nahan Distt. Sirmour H.P.Vill. Moginand Teh.Nahan Distt. Sirmour H.P.Moginand
247	Paras Appliances	OGLI KALA AMB DISTT. SIRMOUR H.P.KALA AMB DISTT.SIRMOUR H.P.OGLI
248	Pasupati Spinning And Weaving Mills Ltd	Village Kheri Tirlokpur Road Kala Amb----Kala Amb/Kheri
249	Perfect Engineering Works	Villge Ogli Kala Amb Teh Nahan Distt Sirmour---Kheri , KALA-AMB
250	Perfect Drop Pins Mfg. Co.	Mauza KheriP.O Trilokpur Kala Amb, Tehsil NahanKala Amb
251	Phoenix Udyog(Pvt.)ltd.	Vill. Moginand,Kala Amb ,Nahan Distt.Sirmour---Kala Amb/Moginand
252	Pidilite Industries Ltd Unit-II	Village Johron Tirlokpur Road kala Amb--Kala Amb
253	Pidilite Industries Ltd Unit-I	Village Moginand Nahan Road Kala Amb ---- Moginand/Kala Amb
254	Pidilite Industries Ltd. Unit-III	Village Rampur Jattan Trilokpur road Kala Amb-----Kala Amb
255	Pioneer Embroideries Ltd.	Village Kheri,Trilokpur road Kala Amb--Kala Amb
256	Poddar Tyre&Rubber Unit-Ii	Village Rampur Jattan Kala Amb
257	Prestige Cable Industries-11	V.P.O. Kala Amb Distt Sirmour (H.P.)V.P.O. Kala Amb Distt Sirmour (H.P.)Kala Amb
258	Primus Pharmaceuticals	.VILLAGE KHARI MOUZA OGLI KALA AMB H.P.
259	Pritam Electricals Industries	VILLAGE KHERI KALA AMB H.P.TRILOKPUR ROAD KALA AMB H.P.KHERI
260	Progressive Industries	Vill. Ogli, Behind Hotel Natraj Near River Markanda, Kala AmKala AmbKaka Amb
261	Protech Telelinks Pvt.Ltd	VILLAGE OGLI SUKETI ROAD KALA AMB H.P.SUKETI ROAD KALA AMB H.P.OGLI
262	Puplast Filtration Sysstems	Village Meerpur Gurudwara, nr M/s Radha Krishn,PO Trilokpur--Kala Amb
263	Pure Petroleum Pvt. Ltd. (Unit-Ii)	Industrial Area, Johron, Kala-Amb-----Johron
264	Pushkar Pharma	Village Bhandariwala, Kheri Kala Amb--Kala Amb
265	Pymen Cable Corporation	Village Moginand , Kala AmbTehsil Nahan, Distt. SirmourKala Amb

266	Radha Krishana Industries	Village Mirpur Gurdwara Tirlokpur Road Kala Amb---Kala Amb
267	Radiant Cement Co (P) Ltd	Village Moginand, Kala Amb
268	Raj Industries	Village Moginand, Kala Amb
269	Rajshree Fabrics	kala amb, tehsil Nahan, Distt. Sirmour--
270	Rama Metal Company	Village Johron Tirlokpur Road Kala Amb----Kala Amb
271	Rao Industries	VILL KHERI, TRILOKPUR ROAD KALA AMB,TEH. NAHAN DISTT. SIRMOROPPOSIT M/S MAA DURGA STEEL, TRILOKPUR ROAD KALA AMBKALA AMB
272	Ras Industry	Village Johron, Kala Amb
273	Rashtriya Electricals And Engineering Corporation	Village Moginand Rampur Jattan Tehsil Nahan ---Moginand
274	Real Fab Packaging Pvt. Ltd	Village Ogli, Nahan RoadKala AmbOgli
275	Real Mazon India Ltd.	Village Ogli ,Tirlokpur Road, Kala Amb--Ogli
276	Reliable Bond	Vill. Johron, I.A, Kala Amb---Johron
277	Retex Inc	Vill Johron, Tirlokpur Road, Kala Amb, Tehsil Nahanat location of M/s Emkay Appliances, as Emkay appliance closedJohron
278	Rica Enterprises	VILLAGE OGLI KALA AMB HPSADAHURA ROAD KALA AMBOGLI
279	Rich Graviss Products Pvt.Ltd	Village Ogli, Kala Amb, District Sirmour, H.P.OGLI
280	Rishi Markanday Flour Mills	C/o M/s Annapurna BhandarBara Chowk , Nahan Nahan
281	Robienn Industries	Village Rampur Jattan, Tehsil Nahan, Distt.Sirmour (H.P.)- ----Rampur Jattan
282	Rsa Technitex	Village Moginand, Kala Amb
283	Rubykon Manufacturing Company	Village Ogli, Nahan RoadKala AmbOgli
284	Ruchira Packaging Products (P) Ltd	Khasra No. 175/68/2,493/72/2 Mauza Kheri Kala Amb-- -KHERI
285	Ruchira Papers Ltd (Kraft Paper Unit)	Tirlokpur Road Kala Amb Nahan Distt Sirmour---Kala Amb
286	Ruchira Papers Limited (Writing And Printing Unit)	Tirlokpur Road, Village Rampur Jattan, Kala-Amb (H.P.) - --Rampur Jattan
287	Ruchira Printing & Packaging	Village Johorn, Near Plot No. 11, Ind. Area, Kala Amb
288	Rudra Industries	Village Johron, Kala Amb
289	Rupin Associate (Unit-Ii)	Village Moginand Teh Nahan Distt Sirmour ----Kala Amb
290	Rupin Associates	Village Moginand Nahan Road Kala Amb Distt Sirmour_Kala Amb/Moginand



291	S. K. Engineers	Village Johron, Trilokpur Road, Kala-Amb (HP)-----Johron
292	S.G Engineers	Village Bhandariwala,P.O Kala Amb---Kala Amb
293	S.P.K Wire Products(P) Ltd.	village Kheri,Trilokpur Kala Amb,Tehsil Nahan--Kheri
294	Saboo Cylinders (P) Ltd	Tirlokpur Road Kala Amb Tehsil Nahan Distt Sirmour - ---Kala Amb
295	Saboo Alloys Private Limited Unit-I	Trilokpur road, Kala Amb,Tehsil Nahan -----Kala Amb
296	Saboo Tor Pvt. Ltd.	trilokpur Road,Kala Amb,Tehsil Nahan--Kala Amb
297	Sadhna Industries	Vill.Mirpur Gurudwara, P.O. Trilokpur,Distt. Sirmour (H.P.)-----Mirpur Gurudwara
298	Sagar Kattha Factory	470, Trilokpur road Kalaamb--Trilokpur
299	Sai Corporation	Village johron, Kala Amb, Tehsil Nahan, Distt. Sirmour--- Kala Amb
300	Sai Auto Glass Works	Village Meerpur Gurudwara.Tehsil Nahan--Meerpur
301	Sai Industry	Plot No. 29, Industrial Area, Kala Amb
302	Sai Tech Medicare	Village Kheri Tirlokpur Road Kala Amb---Kheri
303	Sak Fabrics	Village Moginand, Kala Amb
304	Sangsharmann Plast Pvt. Ltd	Village Khairi, Kala Amb
305	Sarv Biolabs Private Limited	TRILOKPUR ROAD, BEHIND IITT ENGINEERING COLLEGEKALA AMBKALA AMB
306	Satyam Auto Industries ( A Unit Of Jainex Techno Power (P) Ltd)	Vill.Ogli, Tehsil Nahan,Tehsil Nahan,Distt.Sirmour(H.P.)--- --Moginand
307	SBJ Export & Mfg Private Limited	Village Maginand, Tehsil Nahan, (HP)-----Moginand
308	Sbs Biotech Unit-1	Village Rampur Jattan, Kala Amb
309	Sheela Foam Pvt. Ltd.	Mainthapal,Nahan Road ,Kala Amb--Mainthapal
310	Shimnit Utsch India (P) Ltd	Village Rampur Jattan PO Kala Amb --Kala Amb
311	Shiv Poly Pipe	VILLAGE KHERI KALA AMB H.P.TIRLOKPUR ROAD KALA AMB H.P.KHARI
312	Shiv Shakti Enterprises	Nahan, Tehsil NahanDistt. SirmourNahan
313	Shiva Wiron	Village &PO Barma Papri Tehsil Nahan Distt Sirmour
314	Shiva Electricals	Vill. BikramBag, Khajurni- moginand Road, nahan, Kala amb
315	Shiva Industries	VPO Barma papri,tehsil nahan , Distt.Sirmour

316	Shivalik Container Pvt. Ltd. Unit-Ii	plot No-7, Industrial Area Kala Amb
317	Shivalik Packaging Industry	Trilokpur Road,Kala-amb---kala-amb
318	Shivam Enterprises	village Ogli,nahan Rioad Kala Amb--Ogli
319	Shive Shakti Stone Crusher	vill. Kotla, Tehsil. Nahan-Kala Amb
320	Shivom Cotspin Ltd.	Village Khairi, Trilokpur Road, Kala Amb
321	Shree Balaji Tex Fab	Vill. Moginand, Nahan Road, Kala Amb----Moginand, Kala Amb
322	Shree Durga Wheat Products P Ltd	I.A. Kala Amb-Kala Amb
323	Shree Ganesh Poly Plast Pvt. Ltd	Trilokpur road kheriSameKala Amb
324	Shree Ganpati Tax Tube	Village Johron , P.O Kala Amb , TehsilNahan, Distt. Sirmour, H.PJOHRON
325	Shree Khatuji Industries	Industrial area trilokpur Road ,Kala Amb--Kala Amb
326	Shree Krishna Packaging	Viil Ogli Kala Amb
327	Shree Plastic Industries	Village Moginand , Tehsil NAhanDistt. SirmourMoginand
328	Shree Radhe Alloy	Meerpur Road Kala Amb
329	Shree Ridhi Sidhi Industries	Vill.OgliTehsil Nahan,Distt.Sirmour(H.P.)
330	Shree Sai Industries	Village Ogli Kala AmbDistt. SirmourKala Amb
331	Shri Krishna Steelage (P) Ltd	Tirlokpur Road Kala Amb Tehsil Nahan ---Kala Amb
332	Shri Mahamaya Mata Bala Sundri Packaging	Kala Amb Distt. sirmaurKala AmbSirmaur
333	Shri Markanda Guest House	Village Ogli, Kala Amb--Ogli
334	Shri Mata Bala Sundri Lighting	Village Ogli, Kala AmbTehsil NahanOgli
335	Shri Prem Wire (Unit-Ii)	431/397/4/2/1, Moza Kheri,Th. Nahan, Distt. Sirmour(HP)
336	Shubham Prints	Village Rampur Jattan, Kala Amb-Rampur Jattan
337	Sidhwal Cooltech (P) Ltd.	Vill Moginand, P.O. MginandKala AmbKala Amb
338	Sidwal Refrigeration Industries	Manthapal NAhan Road Kala Amb, SirmourKala Amb
339	Sidwal Technologies	Mainthapal,Mauza Rampur JattanNahan Road,Kala AmbKala Amb
340	Sirmaur Steel Metalloys (P) Ltd.	Village Ambwala, P.O. Sainwala
341	Sirmour Hotels(P) Ltd	Nahan Road Kala Amb Tehsil Nahan Distt Sirmour--Kala Amb
342	Sirmour Industries	Suketi road, Kala Amb,Tehsil Nahan--Kala Amb
343	Siya Ram Herbs Life Science	Suketi Road Kala Amb

344	Sks Metals Pvt.Ltd.	OGLI KALA AMBSUKETI ROAD KALA AMB H.P.OGLI
345	Snow Peak Industries	Vill Johron Kala Amb
346	Sns Corporationunit-II	Village Rampur Jattan, Kala Amb
347	Softex Surgical Cotton	Vill Johron Kala Amb
348	Sozin Flora Pharma	Village Mogi Nand, Nahan Road,Kala Amb,Tehsil Nahan--Mogi Nand
349	Span India Scaffoldings	Vill.Johron, P.O. Kala-Amb, Tehsil Nahan-----Johron
350	SPT Industries	Vill Khari Sadhaura Road Kala Amb
351	Stack Components	Trilokpur Road Kala Amb
352	Sudha Graphics & Print Pack	Sadhaura Road Kala Amb--Kala Amb
353	Sugan Fabric Products	Village Moginand, Tehsil NahanNahan, Distt. SirmourNahan
354	Sun Alloys	Village Johron Kala Amb Teh Nahan Distt Sirmour---Kala Amb
355	Sunder Personal Care	Village Johron,Kala AmbTehsil Nahan,Distt. SirmourKala Amb
356	Sunrise Enterprises	Suketi, Kala AmbSirmourSuketi
357	Sunvet Pharma (P) Ltd	Village Upper Moginand Nahan Road Kala Amb--Kala Amb
358	Super Lime	OGLI KALA AMB
359	Super Microns	Village Ogli, P.O Kala AmbTehsil NahanKala Amb
360	Super Nova Auto Industries	Village Johron, Trilokpur Raod Tehsil NahanKala Amb
361	Supermix Machinery Corporation	village - Ogli-Kala Amb
362	Supreme Plasto Container	Nahan road Kala Amb
363	Suraj Industries	Village Rampur Jattan,Mogi NandNahan Road Kala Amb.Rampur Jattan
364	Surge Industries	Vill. Ogli, Tehsil Nahan, Distt. Sirmour (H.P.) -----Ogli
365	Surya Shakti Associates	Village Kheri Trilokpur Road Kala Amb--Kala Amb
366	Surya Tex Tech	Village Rampur Jattan, Kala AmbTehsil NahanRampur Jattan
367	Swastika Printing And Packaging	Village Moginand Nahan Road Kala amb---Kala amb/moginand
368	Symbiosis Pharmaceuticals Pvt. Ltd.	Suketi RoadVillage NaggalKala Amb
369	Systole Remedies	Mouza Ogli,Trilokpur RoadKala AmbKala Amb
370	Techno Plastic Industries	Nahan Road Kala Amb
371	Thakur Ji Papers	Village Meerpur gurudwara,Tehsil Nahan, Distt.Sirmour

372	Thermosol Glass India (P)Ltd.	Village Johron, trilokpur Road Kala Amb Tehsil Nahan Kala Amb
373	Tilok Sons Breweries & Distillery	Vill Mainthapal, Kala Amb, Teh Nahan, Distt. Sirmour (H.P.)-----Kala Amb
374	Tinna Rubber and Infrastructure Ltd.	Village Rampur Jattan, trilokpur Road, Kala Amb 6
375	Tirupati Medipack	KHASRA No. 314/31, VILLAGE NAGAL SUKETI, Th. NAHAN
376	Tirupati Polymers	Village Ogli, Suketi Road Kala Amb--Ogli
377	Tlt Electricals	Village Rampur Jattan Nahan Road Kala Amb--Kala Amb
378	Tonnjes Eastern Security Technologies Pvt Ltd	Village Moginand, tehsil Nahan (HP)----Moginand
379	Ub Biscuits Pvt. Ltd.	Vill. Ogli, Sadhoura road, Kala amb, Teh. Nahan, Distt. Sirmaur (HP) Kala amb
380	Ultra Lighting Enterprises	Vill. Johron, Kala-Amb, Tehsil Nahan, Distt. Sirmour (H.P.)-----Johron
381	Unitech Technocrats	Village Meerpur Gurudwara Tehsil Nahan, Distt. Sirmour Nahan
382	Unova Appliances Pvt.Ltd.	VILLAGE MOGINAND KALA AMB H.P. NAHAN ROAD KALA AMB H.P
383	Valintis Healthcare	Vill Rampur Jattan Kala Amb
384	Vanesa Cosmetics	Trilokpur road, Kala Amb, Tehsil Nahan--Kala Amb
385	Varav Biogenesis Pvt.Ltd	3-A INDUSTRIAL KALA AMB TIRLOKPUR ROAD KALA AMB
386	Varun Medipex	Village Kheri Trilokpur road Kala Amb Kheri
387	Vashisht Alloys	village ogli, nahan road kalaamb, Tehsil nahandistt. Sirmourogli
388	Vashisht Chemicals Pvt. Ltd.	Village Ogli, P.O Kala Amb---Ogli
389	Vesta Appliances	Trilokpur Road, Kala Amb-Johron
390	V-Guard Industries Ltd	Village Moginand Kala Amb Distt Sirmour--Moginand
391	Vidhyasha Pharmaceuticals (Previous Name Lucky Engineering Works)	Vill. Johron, P.O. Kala-Amb, Tehsil Nahan, Distt. Sirmour (H-----Johron
392	Vikas Guest House	Vill Rampur Jattan, PO Kala Amb, Behind Art-N-Glass, near M/s Deep Drawn Kala Amb
393	Vikrant Electronics	Village Johron, Kala Amb--Johron
394	Vimal Industries (Regd) Kala Amb	Mouja Johron Tirlokpur Road Kala Amb Kala Amb
395	Vinay Packaging	vill. Kheri, Trilokpur Road, Kala Amb--Kala Amb
396	Virgo Aluminum Ltd	Village Rampur Jattan, Kala Amb
397	Virgo Industries	Village Rampur Jattan, Kala Amb
398	Vishal Engineering	Trilokpur Road Kala Amb

399	Vishwakarma Safety Glass Industries	Village Meerpur Gurudwara Kala Amb Kala Amb
400	Vi-Son Industries	Vill.Ogli, Trilokpur Road, Kala-Amb, Distt.Sirmour (H.P.)---Ogli
401	Welcure Remedies	Vill.Moginand, Tehsil Nahan, Distt.Sirmour (H.P.)-----Moginand
402	Well Pack Industries	Village Johron Kala Amb Tehsil Nahan, Distt. Sirmour Kala Amb
403	Wonder Products	Village Moginand Nahan Road --Nahan
404	Woodstock Laminates Ltd	Village Moginand, Kala Amb

## **9.6 Status of Solid Waste, Hazardous Waste and Bio-medical Waste Management in Kala Amb Area :-**

### **9.6.1 Solid Waste Management:**

Total solid waste generation of Kala Amb area is approx. 3 to 4 Metric Tons per day. SADA, Trilokpur( Under District Administration) is the agency responsible for collection and disposal of solid waste. Dustbins have been provided by SADA, Trilokpur at various locations. Collected waste is then disposed of at Solid Waste Dumping Site of Municipal Council, Nahan.

In the First, Second and Third meetings of the District Level Special Task Force held under the chairmanship of Deputy Commissioner, Sirmaur it has been decided that Member Secretary SADA, Trilokpur shall identify suitable land confiscated under section 118 of H.P Land reforms and Tenancy Act, 1972 for setting up of a Solid Waste Management Site at Kala Amb in consultation with SDM, Nahan and GM, DIC. Further, Member Secretary, SADA, Trilokpur will invite Expression of Interest from interested parties by giving advertisement in leading newspapers for setting up a Solid Waste Management Site at Kala Amb.

### **9.6.2 Hazardous Waste Management:-**

There are around 400 industrial units in Kala Amb. The industries generating hazardous waste have been covered under Hazardous & Other Waste (Management & Trans Boundary) Rules, 2016. The Hazardous Waste generated by various industries is disposed of to Common disposal facility at scientific landfill site at Dhabota, Nalagarh, District – Solan (H.P).

### **9.6.3 Biomedical Waste Management:-**

There are only three medical Health care facilities in Kala Amb. All the facilities have been covered under Bio Medical Waste Management Rules, 2016. The bio medical waste generated is being disposed of to M/s Enviro Engineers, a Common Bio Medical Waste Disposal Facility located at Solan, H.P.

**10. Proposed action plans (Short, Medium and Long term plans) with time lines including the organization/agency responsible for its implementation for Rejuvenation of River Markanda (River Ghaggar) Kala Amb, Sirmour (Format Supplied by Executing Committee).**

Sr. No.	Action Plan for Rejuvenation of River Ghaggar	Agency Responsible for Execution of Task	Time Line for Execution	Remarks
<b>I</b>	<b>Industrial Effluent Management</b>			
(a)	Inventorization of the water polluting industries in the catchment of River Markanda covering assessment on aspects relating to status of Consents under Water & Air Acts and Authorization, Effluent Generation, ETP Capacities and final mode of effluent discharge	HPSPCB	Within 1 Month	-
(b)	Action against the identified industries in operation without Consent under Water & Air Act/Authorization under Hazardous and Other Wastes (Management and Transboundary Movement) Rules, 2016.	HPSPCB	Within 1 month and continuous process.	Action as per relevant provisions of Water Act, 1974 and Air Act, 1981 shall be taken against any unit found operating without mandatory consent of the HPSPCB.
(c)	Action against the industries who have not installed ETPs or existing ETPs but not operating or treated effluent is not meeting the prescribed standards.	HPSPCB	Within 15 days and regular inspections shall be a continuous feature.	
(d)	Prohibition of Burning of any kind of waste including agro residue.	District Administration, Special Area Development Authority (SADA) Trilokpur	Within 1 Month	

(e)	Estimation of industrial effluent generation and commissioning of CETP.	State Govt., Deptt. of Industries, District Administration	Within 2 years	Environment Clearance and Installation of Conveyance Lines and Commissioning of Treatment Plant.
(f)	Setting up of a Solid Waste Management Site at Kala Amb.	State Govt., Deptt. of Industries, District Administration	Within 2 years	
<b>II Domestic Sewage Management</b>				
(a)	Area wise estimation of total population, water requirement and sewage generation.	IPH, Rural Development Department	Within 1 Month	-
(b)	To undertake channelization of Markanda river from Rukhri to Kala Amb (24 KM) .	I&PH, HPSIDC	Within 2 Years.	Channelization of Markanda River from Rukhri to Kala Amb (24KM) amounting to Rs. 114.02 Crore has been prepared by I&PH Nahan and submitted to the Chairman Ganga Flood Control Commission Patna for approval.
(c)	Installation of continuous Real Time Water Quality Monitoring Station.	I & PH	Within 6 months	Approximately the cost for installation of Continuous Real Time Monitoring System is 30.0 Lakhs.



(d)	Proper design, execution of Sewerage Lines to be incorporated in proposed CETP at Kala Amb.	I&PH, Industry Department	Within 2 Years	Preliminary Project Report (PPR) for laying the pipe line for Sewerage System of Industrial Area Kala Amb and Moginand amounting Rs. 30.40 Cr has been prepared by IPH.
<b>III</b>	<b>Ground Water Management</b>			
(a)	Sampling of Tube wells, Bore wells, Hand Pumps in Kala Amb area.	I&PH, HPSPCB	Within 1 months	-
(b)	Sampling and analysis of Drinking Water Supply Schemes in and around Kala Amb area	I&PH	Within 15 Days	-
(C)	Sealing of contaminated hand pumps and found to be unfit for drinking purpose by the public.	I&PH, HP GWA	Within 3 months	-
(d)	Carrying assessment of ground water survey for quality and to identify over exploited and critical areas.	I&PH, HP GWA	Within 6 months	-
(e)	To conduct periodic surprise inspection of the industries to rule out any forceful injection of industrial effluents into ground water sources	I&PH, HPSPCB	Every 15 Days	-
(f)	All the industries should be directed to obtain NOC from HPGWA/CGWA and action against the units in operation without obtaining NOC from PGWA/CGWA.	I&PH	Within 15 Days	-
<b>IV</b>	<b>Miscellaneous</b>			
(a)	Regular monitoring and sampling of water quality of River Markanda and various drains on monthly basis.	HPSPCB	Every 1 Month.	-
(b)	Impact of water pollution on health of public by organizing Health Camp.	State Health Deptt.,	Every 6 Month	-

(c)	Plantation in Flood Plain Zone, Setting up of Bio-diversity Parks.	Forest Department	Within 6 Months	-
(e)	Checking Encroachment in FPZ of River Markanda.	District Local Administration	Within 6 Months	-
(f)	Prohibition of disposal of Municipal Plastic and Bio-medical Waste particularly in drains	District Local Administration	Within 2 Month	-

**11. Action Taken Report by District and State Level Surveillance Task Force for for Rejuvenation of River Markanda (River Ghaggar) Kala Amb, Sirmour (Format Supplied by Executing Committee).**

Sr. No.	Action taken Points for Rejuvenation of River Ghaggar	Agency Responsible for Execution of Task	Action Taken Report
<b>I</b>	<b>Industrial Effluent Management</b>		
(a)	Inventorization of the water polluting industries in the catchment of River Markanda covering assessment on aspects relating to status of Consents under Water & Air Acts and Authorization, Effluent Generation, ETP Capacities and final mode of effluent discharge	HPSPCB	<b>Completed</b>  Total 94 no's of water Polluting industries located along the stretch of River Markanda with total effluent generation is 5540.4 KLD. All industries have been inspected of the stretch and of them samples of 69 industries have been collected. The samples have been sent to the HPSPCB Regional Laboratory, Paonta Sahib and results of the 52 industries have been received so far. Out of 52 industries, results of 5 industries have been found above the prescribed limit and Notices under the provisions of Water Act, 1974 have been issued.
(b)	Action against the identified industries in operation without Consent under Water & Air Act/Authorization under Hazardous and Other Wastes (Management and Transboundary Movement) Rules, 2016.	HPSPCB	All the industries inspected so far have valid Consent to Operate of the HPSPCB. Action will be taken as and when no-compliance observed.
(c)	Action against the industries who have not installed ETPs or ETPs exist but not operating or treated effluent is not meeting the prescribed standards.	HPSPCB	ETP was found out of order in one industry. Orders for disconnection of power supply of the unit has been issued by the State Board.
(d)	Prohibition of Burning of any kind of waste including agro residue	District Administration, SADA Trilokpur	Time to time directions are being issued to SADA Trilokpur to prevent open burning of any kind.

			The challan of Rs. 5000 =00 has been done against one unit for littering of plastic waste.
(e)	Estimation of industrial effluent generation and commissioning of CETP.	State Govt., Deptt. of Industries, District Administration	The task of preparation of DPR has been already assigned to M/s Environ Technology Ltd and the same is under progress. An advance of Rs. 3.5 Lakhs has already been issued to the agency for preparation of DPR by the SPV i.e. M/s Kala Amb Infrastructure Ltd. The matter regarding acquisition of land is under the consideration of Director, Industries.
(f)	Setting up of a Solid Waste Management Site at Kala Amb	State Govt., Deptt. of Industries, District Administration	SADA Trilokpur and HPSIDC has been directed by Distt level Special Task Force to identify a suitable land for the setting up of a Solid Waste Management Site at Kala Amb.
<b>II</b>	<b>Domestic Sewage Management</b>		
(a)	Area wise estimation of total population, water requirement and sewage generation.	I&PH, Rural Deptt.	I&PH Sub Division Nahan has assessed the Sewerage Load of Kala Amb and Moginand area which comes around 1 MLD.
(b)	To undertake channelization of Markanda river from Rukhri to Kala Amb (24 KM)	I&PH, HPSIDC	DPR for the channelization of Markanda River from Rukhri to Kala Amb (24 KM) amounting to Rs. 114.02 Crore has been prepared by I&PH Nahan and submitted to the Chairman Ganga Flood Control Commission, Patna for approval. As soon as the funds are received from the Ganga Flood Control Commission, Patna, the work of channelization shall be started.

(c)	Installation of continuous Real Time Water Quality Monitoring Station.	I&PH	In the 8th meeting of the Executive Committee held at Chandigarh on 22-12-2018, Hon'ble Justice Pritam Pal the Chairman of the Executive Committee specifically directed that I & PH shall install the real time WATER quality monitoring stations. Approximately Continuous Real Time Monitoring System is 30.0 Lakhs.
(d)	Proper design, execution of Sewerage Lines to be incorporated in proposed CETP at Kala Amb.	I&PH	I&PH will provide the sewerage lines and the primary treatment. Secondary treatment shall be provided in the CETP. The Preliminary Project Report (PPR) for laying of sewerage system for industrial area Kala Amb and Moginand amounting to Rs. 30. 40 Cr has been prepared by I &PH.
<b>III</b>	<b>Ground Water Management</b>		
(a)	Sampling of Tube- wells, Bore-wells, Hand-pumps.	I&PH and HPSPCB	Total 33 no's Samples have been taken by Team of HPSPCB & I&PH, results of 22 Nos of Samples are within the prescribed norms as per BIS Standard (IS 10500:2014) for Drinking Water Supply.
<b>IV</b>	<b>Miscellaneous</b>		
(a)	Regular monitoring and sampling of water quality of River Markanda and various drains on monthly basis.	HPSPCB	10 No's of Sample are being collected from along the stretch of River Markanda every Month. Sampling of Drains contributing to River Markanda has been completed.
(b)	Impact of water pollution on health of public by organizing Health camp.	State Health Deptt., Govt. Medical College & Hospital Nahan	Multi-specialty Health Camp has already been organized by Deptt. of Health and Family Welfare in Kala Amb area on 07.12.2018.

(f)	Setting up of Website for public participation	HPSPCB	The “ <b>NGT matter</b> ” Tab is created on website of State Board at <a href="http://www.hppcb.nic.in">www.hppcb.nic.in</a> . The Action plan along with proceedings of District and State level has been uploaded on the Website.
-----	--	--------	---





**<sup>1</sup>[SCHEDULE – VI]**  
(See rule 3A)

**GENERAL STANDARDS FOR DISCHARGE OF ENVIRONMENTAL  
POLLUTANTS PART-A : EFFLUENTS**

S. No.	Parameter	Standards			
		Inland surface water	Public Sewers	Land for irrigation	Marine coastal areas
1	2	3			
		(a)	(b)	(c)	(d)
1.	Colour and odour	See 6 of Annexure-I	--	See 6 of Annexure -I	See 6 of Annexure-I
2.	Suspended solids mg/l, Max.	100	600	200	(a) For process waste water- 100  (b) For cooling water effluent 10 percent above total suspended matter of influent.
3.	Particulate size of suspended solids	Shall pass 850 micron IS Sieve	--	--	(a) Floatable solids, max. 3 mm.  (b) Settleable solids, max. 850 microns.
<sup>2</sup> 4.	***	*	--	***	--
5.	pH Value	5.5 to 9.0	5.5 to 9.0	5.5 to 9.0	5.5 to 9.0
6.	Temperature	shall not exceed 5°C above the receiving water temperature	--	--	shall not exceed 5°C above the receiving water temperature

<sup>1</sup> Schedule VI inserted by Rule 2(d) of the Environment (Protection) Second Amendment Rules, 1993 notified vide G.S.R. 422(E) dated 19.05.1993, published in the Gazette No. 174 dated 19.05.1993.

<sup>2</sup> Omitted by Rule 2(d)(i) of the Environment (Protection) Third Amendment Rules, 1993 vide Notification No.G.S.R.801(E), dated 31.12.1993.

S. No.	Parameter	Standards			
		Inland surface water	Public Sewers	Land for irrigation	Marine coastal areas
1	2	3			
		(a)	(b)	(c)	(d)
7.	Oil and grease mg/l Max.	10	20	10	20
8.	Total residual chlorin mg/l Max.	1.0	--	--	1.0
9.	Ammonical nitrogen (as N), mg/l Max.	50	50	--	50
10.	Total Kjeldahl Nitrogen (as NH <sub>3</sub> ) mg/l, Max.	100	--	--	100
11.	Free ammonia (as NH <sub>3</sub> ) mg/l, Max.	5.0	--	--	5.0
12.	Biochemical Oxygen demand <sup>1</sup> [3 days at 27°C] mg/l max.	30	350	100	100
13.	Chemical Oxygen Demand, mg/l, max.	250	--	--	250
14.	Arsenic (as As), mg/l, max.	0.2	0.2	0.2	0.2
15.	Mercury (as Hg), mg/l, Max.	0.01	0.01	--	0.01
16.	Lead (as Pb) mg/l, Max.	0.1	1.0	--	2.0
17.	Cadmium (as Cd) mg/l, Max.	2.0	1.0	--	2.0
18.	Hexavalent Chromium (as Cr+6), mg/l max.	0.1	2.0	--	1.0

<sup>1</sup> Substituted by Rule 2 of the Environment (Protection) Amendment Rules, 1996 notified by G.S.R.176, dated 2.4.1996 may be read as BOD (3 days at 27°C) wherever BOD 5 days 20°C occurred.

S. No.	Parameter	Standards			
		Inland surface water	Public Sewers	Land for irrigation	Marine coastal areas
1	2	3			
		(a)	(b)	(c)	(d)
19.	Total chromium (as Cr.) mg/l, Max.	2.0	2.0	--	2.0
20.	Copper (as Cu) mg/l, Max.	3.0	3.0	--	3.0
21.	Zinc (As Zn.) mg/l, Max.	5.0	15	--	15
22.	Selenium (as Se.) mg/l, Max.	0.05	0.05	--	0.05
23.	Nickel (as Ni) mg/l, Max.	3.0	3.0	--	5.0
<sup>1</sup> 24.	* * *	*	*	*	*
<sup>1</sup> 25.	* * *	*	*	*	*
<sup>1</sup> 26.	* * *	*	*	*	*
27.	Cyanide (as CN) mg/l Max.	0.2	2.0	0.2	0.2
<sup>1</sup> 28.	* * *	*	*	*	*
29.	Fluoride (as F) mg/l Max.	2.0	15	--	15
30.	Dissolved Phosphates (as P), mg/l Max.	5.0	--	--	--
<sup>2</sup> 31.	* * *	*	*	*	*
32.	Sulphide (as S) mg/l Max.	2.0	--	--	5.0
33.	Phenoile compounds (as C <sub>6</sub> H <sub>5</sub> OH) mg/l, Max.	1.0	5.0	--	5.0

<sup>1</sup> Omitted by Rule 2(d)(i) of the Environment (Protection) Third Amendment Rules, 1993 vide Notification No.G.S.R.801(E), dated 31.12.1993.

S. No.	Parameter	Standards			
		Inland surface water	Public Sewers	Land for irrigation	Marine coastal areas
1	2	3			
		(a)	(b)	(c)	(d)
34.	Radioactive materials :				
	(a) Alpha emitter micro curie/ml.	$10^{-7}$	$10^{-7}$	$10^{-8}$	$10^{-7}$
	(b) Beta emitter micro curie/ml.	$10^{-6}$	$10^{-6}$	$10^{-7}$	$10^{-6}$
35.	Bio-assay test	90% survival of fish after 96 hours in 100% effluent	90% survival of fish after 96 hours in 100% effluent	90% survival of fish after 96 hours in 100% effluent	90% survival of fish after 96 hours in 100% effluent
36.	Manganese (as Mn)	2 mg/l	2 mg/l	--	2 mg/l
37.	Iron (as Fe)	3 mg/l	3 mg/l	--	3 mg/l
38.	Vanadium (as V)	0.2 mg/l	0.2 mg/l	--	0.2 mg/l
39.	Nitrate Nitrogen	10 mg/l	--	--	20 mg/l
<sup>1</sup> 40.	* * *	*	*	*	*

<sup>1</sup> Omitted by Rule 2(d)(i) of the Environment (Protection) Third Amendment Rules, 1993 vide Notification No. G.S.R. 801(E) dated 31.12.1993

**WASTE WATER GENERATION STANDARDS - PART-B**

S.No.	Industry	Quantum
1.	Integrated Iron & Steel	16 m <sup>3</sup> /tonne of finished steel
2.	Sugar	0.4 m <sup>3</sup> /tonne of cane crushed
3.	Pulp & Paper Industries	
	(a) Larger pulp & paper	
	(i) Pulp & Paper	175 m <sup>3</sup> /tonne of paper produced
	(ii) Viscose Staple Fibre	150 m <sup>3</sup> /tonne of product
	(iii) Viscose Filament Yarn	500 m <sup>3</sup> /tonne of product
	(b) Small Pulp & Paper :	
	(i) Agro residue based	150 m <sup>3</sup> /tonne of paper produced
	(ii) Waste paper based	50 m <sup>3</sup> /tonne of paper produced
4.	Fermentation Industries :	
	(a) Maltry	3.5 m <sup>3</sup> /tonne of grain produced
	(b) Brewery	0.25 m <sup>3</sup> /KL of beer produced
	(c) Distillery	12 m <sup>3</sup> /KL of alcohol produced
5.	Caustic Soda	
	(a) Membrane cell process	1 m <sup>3</sup> /tonne of caustic soda produced excluding cooling tower blowdown
	(b) Mercury cell process	4 m <sup>3</sup> /tonne of caustic soda produced (mercury bearing) 10% blowdown permitted for cooling tower
6.	Textile Industries : Man-made Fibre	
	(i) Nylon & Polyster	120 m <sup>3</sup> /tonne of fibre produced
	(ii) Vixcose rayon	150 m <sup>3</sup> /tonne of product
7.	Tanneries	28 m <sup>3</sup> /tonne of raw hide
8.	Starch. Glucose and related products	8 m <sup>3</sup> /tonne of maize crushed
9.	Dairy	3 m <sup>3</sup> /KL of Milk

- |     |  |   |
|-----|--|---|
| 10. | Natural rubber processing industry   | 4 m <sup>3</sup> /tonne of rubber   |
| 11. | Fertilizer   |   |
|     | (a) Straight nitrogenous fertilizer  | 5 m <sup>3</sup> /tonne of urea or equivalent produced  |
|     | (b) Straight phosphatic fertilizer (SSP & TSP) excluding manufacture of any acid | 0.5 m <sup>3</sup> /tonne of SSP/TSP  |
|     | (c) Complex fertilizer   | Standards of nitrogenous and phosphatic fertilizers are applicable depending on the primary product |

### LOAD BASED STANDARDS - PART-C

<sup>1</sup>[1. Petroleum Oil Refinery:

Parameter 1	Standard 2
	Quantum limit in Kg/l 1,000 tonne of crude processed
1. Oil & Grease	2.0
2. BOD <sub>3 days, 27° C</sub>	6.0
3. COD	50
4. Suspended Solids	8.0
5. Phenols	0.14
6. Sulphides	0.2
7. CN	0.08
8. Ammonia as N	6.0
9. TKN	16
10. P	1.2
11. Cr (Hexavalent )	0.04
12. Cr(Total)	0.8
13. Pb	0.04
14. Hg	0.004
15. Zn	2.0
16. Ni	0.4
17. Cu	0.4
18. V	0.8
19. Benzene	0.04
20. Benzo (a) – Pyrene	0.08

<sup>1</sup> Substituted by Rule 2(ii)(a) of the Environment (Protection) Amendment Rules, 2008 notified by G.S.R.186(E), dated 18.3.2008

**Notes:**

- (i) Quantum limit shall be applicable for discharge of total effluent (process effluent, cooling water blow down including sea cooling water blow down, washings, etc.) to receiving environment (excluding direct application on land for irrigation/horticulture purposes within the premises of refinery).
- (ii) In order to measure the quantity of effluent (separately for discharge to receiving environment, application for irrigation/horticulture purposes within the premises of refinery & blow-down of cooling systems), appropriate flow measuring devices (e.g. V-notch, flow meters) shall be provided with.
- (iii) Quantum of pollutants shall be calculated on the basis of daily average of concentration values (one 24-hourly composite sample or average of three grab samples, as the case may be), average flow of effluent during the day and crude throughput capacity of the refinery.
- (iv) Limit for quantity of effluent discharged (excluding blow-down from seawater cooling) shall be 400 m<sup>3</sup>/1000 tonne of crude processed. However, for refineries located in high rain fall area, limit of quantity of effluent only during rainy days shall be 700 m<sup>3</sup>/1000 tonne of crude processed].

2. Large Pulp & Paper, News Print/ Rayon grade Plants of capacity above 24000 tonne/ Annum

Parameter	Quantum
Total Organic Chloride (TOCI)	2 kg/tonne of product.

**GENERAL EMISSION STANDARDS - PART-D****I. Concentration Based Standards**

Sl. No.	Parameter	Standard Concentration not to exceed (in mg/Nm <sup>3</sup> )
1.	Particulate Matter (PM)	150
2.	Total Fluoride	25
3.	Asbestos	4 Fibres/cc and dust should not be more than 2 mg/Nm <sup>3</sup>



4.	Mercury	0.2
5.	Chlrine	15
6.	Hydrochloric acid vapour and mist	35
<sup>1</sup> 7.	* * *	*
8.	Sulphuric acid mist	50
9.	Carbon monoxide	1% max. (v/v)
<sup>1</sup> 10.	* * *	*
11.	Lead	10 mg/Nm <sup>3</sup>
<sup>1</sup> 12.	* * *	*

## II. Equipment based Standards

<sup>2</sup>[For dispersal of sulphur dioxide, in minimum stack height limit is accordingly prescribed as below]

Sl. No.	Parameter	Standard
1.	Sulphur dioxide	Stack-height limit in metre
	(i) Power generation capacity :	
	- 500 MW and more	275
	- 200/210 MW and above to less than 500 MW	220
	- less than 200/210 MW	$H=14(Q)^{0.3}$
	(ii) Steam generation capacity	
	- Less than 2 tonne/h	Less than 8.5 MT 9
	- 2 to 5 tonne/h	8.5 to 21 MT 12
	- 5 to 10 tonne/h	21 to 42 MT 15
	- 10 to 15 tonne/h	42 to 64 MT 18
	- 15 to 20 tonne/h	64 to 104 MT 21
	- 20 to 25 tonne/h	104 to 105 MT 24
	- 25 to 30 tonne/h	105 to 126 MT 27
	- More than 30 tonne/h	More than 126 MT 30
		or using the formula $H=14(Q)^{0.3}$

<sup>1</sup> Omitted by Rule 2 (g) (iv) of the Environment (Protection) Third Amendment Rules, 1993 vide G.S.R. 801(E) dated 31.12.1993.

<sup>2</sup> Substituted by Rule 2(h)(i), *ibid.*

**Note :** H – Physical height of the stack in metre  
Q – Emission rate of SO<sub>2</sub> in kg/hr.

### III. Load/Mass based Standards

Sl. No.	Industry	Parameter	Standard	
1.	Fertiliser (Urea)			
	Commissioned Prior to 1.1.82	Particulate Matter (PM)	2 kg/tonne of product	
	Commissioned after 1.1.82	Particulate Matter (PM)	0.5 kg/tonne of product	
2.	Copper, Lead and Zinc Smelter/converter	Sulphur dioxide	4 kg/tonne of concentrated (100% acid produced)	
3.	Nitric Acid	Oxides of Nitrogen	3 kg/tonne of weak acid (before concentration) produced	
<sup>1</sup> [4.	Sulphuric Acid Plant		Quantum Limit in kg/tonne	
			Plant capacity for 100%	
			Existing Unit	New Unit
			concentration of	
		Sulphuric Acid (tonne/day)		
		Sulphur dioxide (SO <sub>2</sub> )	Upto 300	2.5 2.0
			Above 100	2.0 1.5]
5.	Coke Oven	Carbon Monoxide	3 kg/tonne of coke produced.	
<sup>2</sup> [6.	Petroleum Oil Refinery (Sulphur Recovery)	Installed Capacity of SRU* (tonne/day)	Kg/tonne of sulphur in the feed to SRU	
			Existing SRU	New SRU
		Sulphur Dioxide	Above 20	26 10
			5 to 20	80 40
			Upto 5	120 80

\* SRU – Sulphur Recovery Unit]

<sup>1</sup> Substituted by Rule 2(ii) of the Environment (Protection) Third Amendment Rules, 2008 notified by G.S.R.344(E), dated 7.5.2008.

<sup>2</sup> Substituted by Rule 2 of the Environment (Protection) Fifth Amendment Rules, 2009 notified by G.S.R.595(E), dated 21.8.2009.

## 7. Aluminium Plants :

(i)	Anode Bake Oven Total Fluoride	0.3 Kg/MT of Aluminium
(ii)	Pot room	
(a)	VSS -do-	4.7 Kg/MT of Aluminium
(b)	HSS -do-	6 Kg/MT of Aluminium
(c)	PBSW -do-	2.5 Kg/MT of Aluminium
(d)	PBCW -do-	1.0 Kg/MT of Aluminium

Note :        VSS = Vertical Stud Soderberg  
                  HSS = Horizontal Stud Soderberg  
                  PBSW = Pre Backed Side Work  
                  PBCW = Pre Backed Centre Work

## 8. Glass Industry :

(a)	Furnace Capacity	
(i)	Up in the product draw Particulate matter 2 Kg/hr ca capacity of 60 MTD/Day	
(ii)	Product draw capacity more than 60 MT/Day	-do- 0.8 Kg/MT of Product drawn

**\*NOISE STANDARDS - PART-E**

A.	Noise Limits for Automobiles (Free Field Distance at 7.5 Metre in dB(A) at the manufacturing Stage	
(a)	Motorcycle, Scooters & Three Wheelers	80
(b)	Passenger Cars	82
(c)	Passenger or Commercial vehicles upto 4 MT	85
(d)	Passenger or Commercial vehicles above 4 MT and upto 12 MT	89
(e)	Passenger or Commercial vehicles exceeding 12MT	91

---

\* Standards notified at S. No. 46 may also be referred.

<sup>1</sup>[AA. Noise limits for vehicles at manufacturing stage

The test method to be followed shall be IS:3028-1998.

**(1) Noise limits for vehicles applicable at manufacturing stage from the year 2003**

Serial Number	Type of vehicle	Noise limits dB(A)	Date of implementation
(1)	(2)	(3)	(4)
1.	<b>Two wheeler</b>		1 <sup>st</sup> January, 2003
	Displacement upto 80 cm <sup>3</sup>	75	
	Displacement more than 80 cm <sup>3</sup> but upto 175 cm <sup>3</sup>	77	
	Displacement more than 175 cm <sup>3</sup>	80	
2.	<b>Three wheeler</b>		1 <sup>st</sup> January, 2003
	Displacement upto 175 cm <sup>3</sup>	77	
	Displacement more than 175 cm <sup>3</sup>	80	
3.	<b>Passenger Car</b>	75	1 <sup>st</sup> January, 2003
4.	<b>Passenger or Commercial Vehicles</b>		1 <sup>st</sup> July, 2003
	Gross vehicle weight upto 4 tonnes	80	
	Gross vehicle weight more than 4 tonnes but upto 12 tonnes.	83	
	Gross vehicle weight more than 12 tonnes.	85	

**(2) Noise limits for vehicles at manufacturing stage applicable on and from 1<sup>st</sup> April, 2005**

Serial Number	Type of vehicles	Noise limits dB(A)
1.0	<b>Two wheelers</b>	
1.1	Displacement upto 80 cc	75
1.2	Displacement more than 80 cc but upto 175 cc	77
1.3	Displacement more than 175 cc	80
2.0	<b>Three wheelers</b>	
2.1	Displacement upto 175 cc	77
2.2	Displacement more than 175 cc	80
3.0	<b>Vehicles used for the carriage of passengers and capable of having not more than nine seats, including the driver's seat</b>	74

<sup>1</sup> Substituted by Rule 2 of the Environment (Protection) Fourth Amendment Rules, 2002 notified vide Notification G.S.R. 849(E), dated 30.12.2002 (Earlier 'AA – Noise limits for vehicles w.e.f. 1<sup>st</sup> January 2003' inserted by Rule 2 (2) of the Environment (Protection) Amendment Rules, 2000 notified vide Notification G.S.R. 742(E), dated 25.9.2000.)

4.0	<b>Vehicles used for the carriage of passengers having more than nine seats, including the driver's seat, and a maximum Gross Vehicle Weight (GVW) of more than 3.5 tonnes</b>	
4.1	With an engine power less than 150 KW	78
4.2	With an engine power of 150 KW or above.	80
5.0	<b>Vehicles used for the carriage of passengers having more than nine seats, including the driver's seat : vehicles used for the carriage of goods.</b>	
5.1	With a maximum GVW not exceeding 2 tonnes	76
5.2	With a maximum GVW greater than 3 tonnes but not exceeding 3.5 tonnes	77
6.0	<b>Vehicles used for the transport of goods with a maximum GVW exceeding 3.5 tonnes.</b>	
6.1	With an engine power less than 75 KW	77
6.2	With an engine power of 75 KW or above but less than 150 KW.	78
6.3	With an engine power of 150 KW or above.	80]

<sup>1</sup>[Provided that for vehicles mentioned at serial numbers 3.0 to 6.3, the noise limits for the following States shall be applicable on and from the date specified against that State,-

- (i) Himachal Pradesh with effect from 1<sup>st</sup> October, 2005
- (ii) Jammu and Kashmir with effect from 1<sup>st</sup> October, 2005
- (iii) Madhya Pradesh with effect from 1<sup>st</sup> September, 2005
- (iv) Punjab with effect from 1<sup>st</sup> October, 2005
- (v) Rajasthan with effect from 1<sup>st</sup> June, 2005
- (vi) Uttar Pradesh (Mathura, Kannauj, Muzaffarnagar, Aligarh, Farukhabad, Saharanpur, Badaun, Barreilly, Moradabad, Hathras, Rampur, Bijnor, Agra, Pilibhit, J.P. Nagar, Mainpuri, Lalitpur, Hardio, Ferozabad, Jhansi, Shahjahanpur, Etawah, Jalon, Lakhimpur, Kheri, Etah, Mahoba, and Sitapur) with effect from 1<sup>st</sup> June, 2005.
- (vii) Uttranchal with effect from 1<sup>st</sup> July, 2005.]

B. Domestic appliances and construction equipments at the manufacturing stage to be achieved by 31<sup>st</sup> December, 1993.

(a) Window Air Conditioners of 1 ton to 1.5 ton	68
(b) Air Coolers	60
(c) Refrigerators	46
<sup>2</sup> [(d) * * * .....]	...
(e) Compactors (rollers), Front Loaders, Concrete mixers, Cranes (moveable), Vibrators and Saws	75

<sup>1</sup> Inserted by the Environment (Protection) Amendment Rules, 2005 notified vide Notification G.S.R.272 (E), dated 5.5.2005.

<sup>2</sup> Entry (d) relating to 'Diesel Generator of Domestic Purposes.....85 – 90' omitted by Rule 3 of the Environment (Protection) Second Amendment, Rules, 2002 notified vide Notification G.S.R. 371(E), dated 17.5.2002.

## **ANNEXURE-I**

(For the purposes of Parts – A, B and C)

The State Boards shall following guide-lines in enforcing the standards specified under the schedule VI :

- (1) the waste waters and gases are to be treated with the best available technology (BAT) in order to achieve the prescribed standards.
- (2) the industries need to be encouraged for recycling and reuse, of waste materials as far as practicable in order to minimize the discharge of wastes into the environments.
- (3) the industries are to be encouraged for recovery of biogas, energy and reusable materials.
- (4) while permitting the discharge of effluent and emission into the environment, State Boards have to take into account the assimilative capacities of the receiving bodies, especially water bodies so that quality of the intended use of the receiving waters is not affected. Where such quality is likely to be effected discharges should not be allowed into water bodies.
- (5) the Central and State Boards shall put emphasis on the implementation of clean technologies by the industries in order to increase fuel efficiency and reduce the generation of environmental pollutants.
- (6) All efforts should be made to remove colour and unpleasant odour as far as practicable.
- (7) The standards mentioned in the Schedule shall also apply to all other effluents discharged such as industrial mining, and mineral processing activities and sewage.
- (8) the limit given for the total concentration of mercury in the final effluent of caustic soda industry, is for the combined effluent from (a) Cell house, (b) Brine Plant, (c) Chlorine handling, (d) hydrogen handling and (e) hydro choleric acid plant.
- (9) <sup>1</sup>[(a)....(f)]
- (10) All effluents discharge including from the industries such as cotton textile, composite woolen mills, synthetic rubber, small pulp & paper, natural rubber, petro-chemicals, tanneries, point dyes,

---

<sup>1</sup> Omitted by Rule 4 of the Environment (Protection) Rules, 1996 notified by notification G.S.R. 176(E), dated 24.1996.

slaughter houses, food & fruit processing and diary industries into surface waters shall conform to be BOD limit specified above, namely 30 mg/l. For discharge an effluent having a BOD more than 30 mg./l, the standards shall conform to those given, above for other receiving bodies, namely, sewers, coastal waters, and land for irrigation.

- (11) <sup>1</sup>[\*\*\*.....]
- (12) In case of fertilizer industry the limits in respect of chromium and fluoride shall be complied with at the outlet of chromium and fluoride removal units respectively.
- (13) In case of pesticides :
  - (a) The limits should be complied with at the end of the treatment plant before dilution.
  - (b) Bio-assay test should be carried out with the available species of fish in the receiving water, the COD limits to be specified in the consent conditions should be correlated with the BOD limits.
  - (c) In case metabolites and isomers of the Pesticides in the given list are found in significant concentration, standards should be prescribed for these also in the same concentration as the individual pesticides.
  - (d) Industries are required to analyze pesticides in waste water by advanced analytical methods such as GLC/HPLC.
- (<sup>2</sup>14) The chemical oxygen demands (COD) concentration in a treated effluent, if observed to be persistently greater than 250 mg/l before disposal to any receiving body (public sewer, land for irrigation, inland surface water and marine coastal areas), such industrial units are required to identify chemicals causing the same. In case these are found to be toxic as defined in the Schedule I of the Hazardous Rules 1989 the State Board in such cases shall direct the industries to install tertiary treatment stipulating time limit.
- (15) Standards specified in Part A of Schedule – VI for discharge of effluent into the public sewer shall be applicable only if such sewer leads to a secondary treatment including biological treatment system, otherwise the discharge into sewers shall be treated as discharge into inland surface waters].

---

<sup>1</sup> Omitted by Rule, 2(k) (vii) of the Environment (Protection) Third amendment Rules, 1993 vide G.S.R. 801 (E), dated 31.12.1993.

<sup>2</sup> Inserted by rule 2(k) (ix), *ibid*.



## **ANNEXURE-II**

(For the purpose of Part-D)

The State Boards shall follow the following guidelines in enforcing the standards specified under Schedule VI:

- (a) In case of cement plants, the total dust (from all sections) shall be within 400 mg/Nm<sup>3</sup> and 250 mg/Nm<sup>3</sup> for the plants upto 200 t/d and more than 200 t/d capacities respectively.
- (b) In respect of calcinations process (e.g. Aluminum Plants) Kilns. and step Grate Bagasse fired-Boilers. Particulate Matter (PM) emissions shall be within 250 mg/Nm<sup>3</sup>.
- (c) In case of thermal power plants commissioned prior to 01.01.1982 and having generation capacity less than 62.5 MW, the PM emission shall be within 350 mg/Nm<sup>3</sup>.
- (d) In case of Lime Kilns of capacity more than 5 t/day and upto 40 t/day, the PM emission shall be within 500 mg/Nm<sup>3</sup>.
- (e) In case of horse shoe/pulsating Grate and Spreader Stroker Bagasse-fired-Boilers, the PM emission shall be within 500 (12% CO<sub>2</sub>) and 800 (12% CO<sub>2</sub>) mg/Nm<sup>3</sup> respectively. In respect of these boilers, if more than attached to a single stack, the emission standards shall be fixed, based on added capacity of all the boilers connected with the stack.
- (f) In case of asbestos dust, the same shall not exceed 2mg/Nm<sup>3</sup>.
- (g) In case of the urea plants commissioned after 01.01.92, coke ovens and lead glass units, the PM emission shall be within 50 mg/Nm<sup>3</sup>.
- (h) In case of small boilers of capacity less than 2 tons/hour and between 2 to 5 tons/ hour, the PM emissions shall be within 1000 and 1200 mg/Nm<sup>3</sup>.
- (i) In case of integrated Iron and Steel Plants, PM emission upto 400 mg/Nm<sup>3</sup> shall be allowed during oxygen lancing.

- (j) In case of stone crushing units, the suspended PM contribution value at a distance of 40 meters from a controlled, isolated as well as from a unit located in cluster should be less than 600 micrograms/Nm<sup>3</sup>.<sup>1</sup>[\* \* \*] These units must also adopt the following pollution control measures :
- (i) Dust containment cum suppression system for the equipment;
  - (ii) Construction of wind breaking walls;
  - (iii) Construction of the metalled roads within the premises;
  - (iv) Regular cleaning and wetting of the ground within the premises;
  - (v) Growing of a green belt along with periphery.
- (k) In case of Ceramic industry, from the other sources of pollution, such as basic raw materials and processing operations, heat recovery dryers, mechanical finishing operation, all possible preventive measures should be taken to control PM emission as far as practicable.
2. The total fluoride emission in respect of Glass and Phosphatic Fertilizers shall not exceed 5 mg/Nm<sup>3</sup> and 25 mg/Nm<sup>3</sup> respectively.
- <sup>2</sup>3. [In case of copper, lead and zinc smelting, the off-gases may, as far as possible, be utilized for manufacturing sulphuric acid]
- <sup>3</sup>4. [In case of cupolas (Foundries) having capacity (melting rate) less than 3 tonne/hour, the particulate matter emission shall be within 450 mg/Nm<sup>3</sup>. In these cases it is essential that stack is constructed over the cupolas beyond the charging door and the emissions are directed through the stack, which should be at least six times the diameter of cupola. In respect of Arc Furnaces and Induction Furnaces, provision has to be made for collecting the fumes before discharging the emissions through the stack].

[No. Q-15017/24/89-CPW]  
MUKUL SANWAL, Jt. Secy.

---

<sup>1</sup> Omitted by Rule 2(i)(iii) of the Environment (Protection) Third Amendment Rules, 1993, vide G.S.R. 801(E) dated 31.12.1993.

<sup>2</sup> Substituted by Rule 2(1)(i); Ibid.

<sup>3</sup> Added by Rule 2(1)(ii), Ibid.

a general rule the following rates per capita per day may be considered minimum for domestic and non domestic needs:

- 1) For communities with population up to 20 000 and without flushing system
  - a) water supply through standpost 40 lphd ( Min )
  - b) water supply through house service connection 70 to 100 lphd
- 2) For communities with population 20 000 to 100,000 together with full flushing system 100 to 150 lphd
- 3) For communities with population above 100 000 together with full flushing system 150 to 200 lphd

NOTE — The value of water supply given as 150 to 200 litres per head per day may be reduced to 135 litres per head per day for houses for Lower Income Groups ( LIG ) and Economically Weaker Section of Society ( EWS ), depending upon prevailing conditions.

4.1.1 Out of the 150 to 200 litres per head per day, 45 litres per head per day may be taken for flushing requirements and the remaining quantity for other domestic purposes.

#### 4.2 Water Supply for Buildings Other Than Residences

Minimum requirements for water supply for buildings other than residences shall be in accordance with Table 1.

### 5 DRAINAGE AND SANITATION REQUIREMENTS

#### 5.1 General

There shall be at least one water tap and arrangements for drainage in the vicinity of each water-closet or group of water-closets in all buildings.

#### 5.2 Residences

5.2.1 Dwellings with individual conveniences shall have at least the following fitments:

- a) One bath room provided with a tap,
- b) One water-closet, and
- c) One nahani or sink either in the floor or raised from the floor with a tap.

**Table 1 Water Requirements for Buildings Other than Residences**

Sl No.	Type of Building	Consumption Per Day, litres
(1)	(2)	(3)
i)	Factories where bath rooms are required to be provided	45 per head
ii)	Factories where no bath rooms are required to be provided	30 per head
iii)	Hospital ( including laundry ) :	
a)	Number of beds not exceeding 100	340 per head
b)	Number of beds exceeding 100	450 per head
iv)	Nurses' homes and medical quarters	135 per head
v)	Hostels	135 per head
vi)	Hotel	180 per head
vii)	Offices	45 per head
viii)	Restaurants	70 per seat
ix)	Cinemas, concert halls and theatres	15 per seat
x)	Schools:	
a)	Day schools	45 per head
b)	Boarding schools	135 per head

NOTE — For fire demand in buildings refer IS 9668 : 1981.

Where only one water-closet is provided in a dwelling, the bath and water-closet shall be separately accommodated.

NOTE — Water-closets, unless otherwise indicated, shall be of Indian style ( squatting type ).

5.2.2 Dwellings without individual conveniences shall have the following fitments:

- a) One water tap with draining arrangement in each tenement,
- b) One water-closet and one bath for every two tenements, and
- c) Water taps in common bath rooms.

#### 5.3 Buildings Other Than Residences

The requirements for fitments for drainage and sanitation in case of buildings other than residences shall be in accordance with Tables 2 to 12.

### 6 WATER SUPPLY, DRAINAGE AND SANITATION REQUIREMENTS FOR RAILWAY PLATFORMS, BUS STATIONS, BUS TERMINALS AND AIRPORTS

#### 6.1 General

The water supply, drainage and sanitation requirement specified in 6.2 to 6.4 for railway stations, bus stations, bus terminals, sea ports



(3)

**Government of Himachal Pradesh**  
**Department of Environment, Science & Technology**

No. STE-E(3)-22/2018

Dated: Shimla-2, 07.09.2018

**NOTIFICATION**

In compliance to the orders passed by Hon'ble National Green Tribunal on 07.08.2018 in the matter of Original Application No. 138 / 2016 and OA No. 139/2016, the Governor Himachal Pradesh is pleased to constitute the Special Task Forces (STFs) at State Level and District Level for the purpose of identifying the persons responsible for discharging effluents beyond standards into tributaries of river Ghaggar leading to water pollution and thus violating the laws.

**State Level Special Task Force:**

The State Level Special Task Force shall comprise of the following officers:

1. Chief Secretary to the Government of Himachal Pradesh.
2. Addl. Chief Secretary (Environment, Sci., & Technology) Govt. of HP.
3. Addl. Chief Secretary (Urban Development) Govt. of HP.
- ✓ 4. Member Secretary, HP State Pollution Control Board. (He will be the Member Secretary of this State Level Special Task Force).

**District Level Special Task Force:**

The District Level Special Task Force for Solan and Sirmour Districts shall comprise of the following officers:

1. The concerned Deputy Commissioner.
2. Nominee of the concerned District & Sessions, Judge.
3. The concerned Superintendent of Police.
4. The Executive Officer of the Local bodies of concerned District.
5. The Regional Officer, H P State Pollution Control Board of concerned District. (He will be the Member Secretary of the District Level Task Force).

The terms of reference of Special Task Forces shall be as under:-

The District Level Special Task Forces shall identify the persons responsible for discharging of industrial and municipal effluents causing water pollution in River Ghaggar and its tributaries and will submit a monthly Action Taken Report to the State Level Special Task Force. The State Level Special Task Force will furnish quarterly report or the Action Taken Report to the Central Pollution Control Board. Such reports shall also be uploaded on the websites of the State Pollution Control Board as well as the Department of Environment, Science & Technology.

By order

(Tarun Kapoor)

Addl. Chief Secretary (Env. Sci., & Tech.)  
to the Government of Himachal Pradesh

..2..

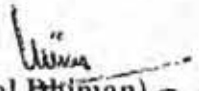


Dated: Shimla-2 07.09.2018

Endsts. No. STE-E(3)-6/2016

Copy forwarded to for information and necessary action to:-

1. The Chief Secretary to the Govt. of HP, Shimla-2.
2. The Chief Secretary to the Govt. of Haryana at Chandigarh.
3. The Chief Secretary to the Govt. of Punjab at Chandigarh.
4. The Administrator of Union Territory Chandigarh.
5. The Addl. Chief Secretary (UD) to the Government of HP, Shimla-2.
6. The Director (Env. Science & Technology) Shimla-1
7. The Member Secretary, H P State Pollution Control Board, Shimla-09
8. The Deputy Commissioners, Solan and Sirmour.
9. The Superintendent of Police, Solan and Sirmour.
10. The Member Secretary, State Legal Service Authority, Shimla-171009.
11. The District Legal Service Authorities, Solan and Sirmour.
12. Copies to concerned Members of State Level Special Task Force & District Level Task Force.
13. The Director, Information and Public Relations, Himachal Pradesh for wide publicity.

  
 (Satpal Dhillon) 7-9-2018

Joint Secretary (Env. Sci., & Tech.) to the  
 Government of Himachal Pradesh  
 Phone No. 0177-2621874

213

M.S.

Minutes of Meeting held under the Chairmanship of Sh. Lalit Jain, IAS, Deputy Commissioner, Distt. Sirmaur, H.P. on 05.10.2018 at 11:30 AM regarding setting up of CETPs in Paonta Sahib and Kala Amb.


The followings were present during the meeting:

Sr. No.	Name & Designation	
1	Deputy Commissioner, Sirmaur	Chairman
2	Dr. Sharawan Kumar, Sr. Environmental Engineer, HPSPCB Paonta Sahib	Member Secretary
3	Sh. G.S. Chauhan, GM, DIC	Special Invitee
4	Smt. Daksha Gupta, Shivalik Solid Waste Management Ltd.	Special Invitee
5	Sh. Sakshi Satti, Member Secretary, SWCA, DIC Kala Amb	Special Invitee
6	Sh. Subhash Chaudhary, Member Secretary, SWCA, DIC Paonta Sahib	Special Invitee

Apart from this representatives from Chamber of Commerce, Kala Amb & Paonta Sahib, Laghu Bharti Udyoug, Kala Amb, Pharma Association, Kala Amb, M/s Kala Amb Infrastructure Company and M/s Sirmaur Green Environ Ltd. were present during the meeting. The list of members present during the meeting has been attached as **Annexure-I**.

At the outset, Sr. Environmental Engineer, HPSPCB Paonta Sahib welcomed the Chairman, Officials of different Deptt. and the representatives of different industries from Paonta Sahib and Kala Amb. Thereafter he briefed about the setting up of CETPs in Paonta Sahib and Kala Amb. The following issues were discussed:

#### CETP at Paonta Sahib:

- EE I  
A (Paonta Sahib)  
6/2/11
- Special Purpose Vehicle:-** It was apprised to the house that a SPV by the name of M/s Sirmaur Green Environ Ltd. has been constituted under section 25 of Companies Act, 1956. The worthy Chairman suggested the house that there should be Govt. Representatives in the SPV. In this connection it was decided that Additional Chief Secretary, Industry shall be requested to nominate Govt. representatives as members in SPV. Further, the chairman directed that all the procurement while setting up of CETP shall be transparent and after completing all the codal formalities as inviting open bids, since public money will be involved in this venture.
  - Detailed Project Report:-** It was apprised to the house that DPR has been prepared by M/s Enviro Technology Ltd., Ankleshwar, Distt. Bharuch, Gujarat. The worthy chairman asked the M/s Sirmaur Green Environ Ltd. about the mode of transfer of effluent from the industries to the CETP to which they replied that it will be a combination of pipelines as well as through tankers.
- 



- **Environment Clearance:-** It was apprised to the house that M/s Sirmaur Green Environ Ltd. applied for EC under the provisions of EIA notification, 2006. The MoEF has granted TOR dated 10.08.2017 valid for 3 years with a condition that final EC shall be granted after land allotment.
- **Allotment of Land:-** It was apprised to the house by Sr. Environmental Engineer, HPSPCB Paonta Sahib that the proposal for allotment of land at Plot No. 96 & 97 land measuring 2412 Sq. mtr in I.A. Gondpur, Paonta Sahib for setting up of CETP was under consideration with Director of Industries. The Govt. directed to evaluate the technology used in CETP and the presentation was made to the committee by M/s Sirmaur Green Environ Ltd on 17.09.2018. The technology was approved by the expert committee comprising of Chief Engineer, I&PH, Shimla Zone, Executive Engineer, HPSIDC Nahan, Distt. Sirmaur, Executive Engineer, I&PH Paonta Sahib and Regional Officer, HPSPCB Paonta Sahib. The case has again been sent to Govt. for approval and soon the land shall be transferred.
- **Funding:-** It was apprised to the house that the ratio of funding the expenditure to be incurred on the installation of CETP will be 50:25:25 i.e. 50% will be incurred by Central Govt., 25% by the State Govt. and the rest of the 25% by the industries. The worthy Chairman raised the issue that from where can we raise the funds for 25% of the expenditure to be incurred by the State Govt. Further, it was finally decided that a meeting shall be organized at Shimla with all the stakeholders i.e. Additional Chief Secretary, Industries, Additional Chief Secretary, Urban Development, Chairman/Member Secretary, HP State Pollution Control Board and Deputy Commissioner along with Sr. Environmental Engineer, HPSPCB Paonta Sahib, GM, DIC Nahan and representatives from the industries so that final decision on the funding can be taken.
- **Margin for Price Escalation:-** It was also apprised to the house that keeping in mind the rate of inflation final project cost of CETP may rise and we should keep a margin for the price escalation. To this the worthy Chairman said that it can be met out from the interest gained from the funds that has been raised for the project.

#### **CETP at Kala Amb:**

It was informed in house by the Member Secretary that an executing committee has been constituted by the Hon'ble NGT to check the pollution status of River Ghaggar. Further a Special Task Force has been constituted by the State Govt. under the Chairmanship of Deputy Commissioner, Sirmaur to inspect the water polluting industries in catchment of River Markanda which in turn is the tributary of River Ghaggar. The water quality of Jattan Wala Nallah is not as per the prescribed standards due to discharge of untreated effluents and domestic sewage. Hence, there is an urgent requirement of a CETP in Kala Amb area and the process of installation needs to be expedited.





- **Formation of Special Purpose Vehicle:-** It was informed in the house by the Member Secretary that proposal has already been sent to the Govt. of H.P. for approval of nomination of M/s Kala Amb Infrastructure Company as a SPV. The matter is being taken up with the State Govt. for earlier decision. Further, Additional Chief Secretary, Industry shall be requested to nominate Govt. representatives as members in SPV.
- **Status of Land Acquisition:-** G.M. Industries informed that the land has been identified and shown to M/s Environ Technology Ltd., Ankleshwar who has been assigned the task of preparation of DPR. An advance of Rs. 3.5 Lakhs has already been issued to the agency for preparation of DPR by the SPV i.e. M/s Kala Amb Infrastructure Ltd. The matter regarding acquisition of land is being taken up with Director, Industries. On the matter of transfer of land worthy Chairman pointed out in the house that since there is Private land involved permission under Section 118 will be required from the Govt. Further, since the proposed land falls outside the notified industrial area there will be a need of Public Hearing while acquiring Environmental Clearance.
- **Status of DPR:-** Representative of M/s Environ Technology Ltd. apprised the house that the process of preparation of DPR is under progress and it shall be completed soon. Sr. Environmental Engineer, HPSPCB asked the representative of M/s Environ Technology Ltd. to give a technical presentation on setting up of CETP in Kala Amb once the DPR is prepared. Worthy Chairman asked the house what should be the mode of transportation of effluent from the industries to the CETP to which representatives of Ms/s Kala Amb Infrastructure Ltd. apprised that it will be a combination of Pipelines as well as through tankers.
- **Action Plan for Treatment of Domestic Sewage by I&PH:-** Worthy Chairman asked the house whether domestic sewage will be the part of the CETP or not. It was finally decided that I&PH will make its own arrangements to collect the domestic sewage from the residential houses in Kala Amb. Decision regarding treatment of domestic sewage by CETP will be taken by I&PH.
- **Funding:-** It was apprised to the house that the ratio of funding the expenditure to be incurred on the installation of CETP will be 50:25:25 i.e. 50% will be incurred by Central Govt., 25% by the State Govt. and the rest of the 25% by the industries. The worthy Chairman raised the issue that from where can we raise the funds for 25% of the expenditure to be incurred by the State Govt. Further, it was finally decided that a meeting shall be organized at Shimla with all the stakeholders i.e. Additional Chief Secretary, Industries, Additional Chief Secretary, Urban Development, Member Secretary/Chairman, HP State Pollution Control Board and Deputy Commissioner along with Sr. Environmental



Engineer, HPSPCB Paonta Sahib, GM, DIC Nahan and representatives from the industries so that final decision of funding can be taken.

The meeting ended with a vote of thanks to all the participants present in the meeting.


  
Chairman-cum-Deputy Commissioner,  
Sirmaur, at Nahan

Endst. No. PCB/SEE(Pt) CETP file/2018- 1537-48

Date: 29/10/18

Copy to the following for information and further necessary action please:-

- ✓ 1. The Member Secretary, HPSPCB, Shimla H.P.
2. SE, I&PH Department, Nahan Distt. Sirmaur H.P.
3. General Manager, DIC, Nahan, Distt. Sirmaur H.P.
4. Executive Engineer, I&PH Nahan, Distt. Sirmaur H.P.
5. Executive Engineer, I&PH Paonta Sahib, Distt. Sirmaur H.P.
6. TCP-cum-Member Secretary SADA Kala Amb, Nahan, Distt. Sirmaur H.P.
7. TCP-cum-Member Secretary SADA Paonta Sahib, Distt. Sirmaur H.P.
8. Member Secretary, SWCA Kala Amb, Distt. Sirmaur H.P.
9. Member Secretary, SWCA Paonta Sahib, Distt. Sirmaur H.P.
10. President Chamber of Commerce, Kala Amb, Distt. Sirmaur H.P.
11. President Chamber of Commerce, Paonta Sahib, Distt. Sirmaur H.P.
12. President Laghu Bharti Udyog, Kala Amb Distt. Sirmaur H.P.
13. Guard File.

  
Member Secretary-cum-Sr. Environmental Engineer,  
HPSPCB, Regional Office, Paonta Sahib, H.P.



Meeting held under the Chairmanship of Chairman-cum- Deputy Commissioner, Sirmour on dated 05-10-2018 for the establishment of CETP at Paonta Sahib and kala Amb

218

S. No	Name of the participant	Name of organization	e-mail address	Contact No	Signature
1	I. B. Rolling Mills Ltd	Director	guita.jbl@gmail.com	93151-74008	[Signature]
2	Saboo Group Kala Amb	Director	subroodindia@gmail.com	9315151152 9354705328	[Signature]
3	Jay Aay Alloy Pvt Ltd Kala Amb	Director	ashok934@gmail.com	9888044933	[Signature]
4	ANIL MEHTA	ZEE LABORATORY LIMITED Patna	lediffmail@zee-lab.com	98050-69069	[Signature]
5	Viney Butts	LABORATORY INDIA	india@laboratoryindia.com	9816656277	[Signature]
6	Neeraj Bhatia	Three B Healthcare	nb@vidithhealthcare.com	98160-70417	[Signature]
7	MANOJ GARG VARAN BIOGENERIS	VARAN	varanbiogeneris2010@gmail.com	09416017890	[Signature]
8	NAV RATTAN DEV	HIMACHAL POLYOLEFINS LTD Kala Amb	gmhpl@himpd.com	9315920101	[Signature]
9	Chander Shekha Gupta	Kala Amb	CSG@kalaamb.com	9316612345	[Signature]
10	Bassem Zafar	ETL/24P	bassem.zafar@etl.co.in	9779801890	[Signature]
11	Daksha Gupta	SSOML Kharakpur	rajeevthakur@ssoml.com	9816022004	[Signature]
12	Rakesh Kumar	Ruchin Htl Ltd	hr@ruchinhtl.com	905500501	[Signature]
13	Y. Dayal	Sheela Foam Ltd	yogeshwar@sheelafoam.com	9971698861	[Signature]
14	G.K. Maheshwari	HTPL (P) Ltd	htpl@htpl.co.in	9418022389	[Signature]
15	J.P. Sharma	Vanasa Cosmetics	jsharma@vanasa.co.in	92135-36897	[Signature]
16	RAJESH CUPID	Poonbati Skyway mfg	rajeshgpt24@gmail.com	941602745	[Signature]

**Meeting held under the Chairmanship of Chairman-cum- Deputy  
Commissioner, Sirmour on dated 05-10-2018 for the  
establishment of CETP at Paonta Sahib and kala Amb**

218

S. No	Name of the participant	Name of organization	e-mail address	Contact No	Signature
17	Subhash Chaudhary	MS. SW CH Paonta Sahib	Subhashi.chaudhary 162@gmail.com	9418085767	
18	Titender Singh	Relax pharma Rit. Sah.	Titender. Singh @ relaxpharmaceuticals.com	9816087330	
19	Sanjeer Sharma	Vashist Chemicals kala amb	vashistchemicals @gmail.com	9816638572	
20	Ashok Kumar	KACEI	ka.cei@yahoo.com	946746896	
21	Ajay Sharma	Labrak Pharma	labrakpharma@gmail.com	9418464262	
22	C. M. SHARMA	NOMZ MED SCIENCE PHARM	main@nomzpharm.com	9805023178	
23	SHANSHU KUMAR	MMS Heal Meare	healmeare healshams@gmail.com	9254124143	
24	Om Prakash Dubey	Virgo Ind.	hr@virgolam.com	8010079222	
25	LANJAY AHUJA	Integrated Lab (P) Ltd	md. upl pharma @gmail.com	781663565	
26	K. P. Singh	Pioneer Emb HSA Kheri	hr@silkolite.com	9355802045	
27	Neevij Kumar	Symbiosis Pharma	Symbiosis2004 @gmail.com	7832990832	
28	D.K. Saini	Symbiosis Pharmaceuticals	symbiosispharmaceuticals@gmail.com	9488279308	
29	Sanjay Mishra	Pioneer Emb Limited	Sanjaymishra@ Silkolite.com	9315110121	
30	Sabhi Satti	MS, Dept of Inds Kala Amb		9418173519	
31	Lalit Thakur	4ES, 4SPCS Kala Amb	Lalit.thakur@ gmail.com	7018168221	
32	Pankaj Sharma	Jr. Sw. Singh NPSPCB, Paonta Sahib	pankaj-sharma@ yahoo.com	94189-64049	



## 219

[illegible]

Minutes of Meeting held under the Chairmanship of Sh. Lalit Jain, IAS, Deputy Commissioner, Distt. Sirmaur, H.P. on 12.10.2018 at 11:30 AM regarding Special Task Force constituted by Hon'ble NGT in OA No. 138/2016 and 139/2016.

The followings were present during the meeting:

Sr. No.	Name & Designation	
1	Deputy Commissioner, Sirmaur	Chairman
2	Sh. Rohit Malpani, Superintendent of Police, Sirmaur	Member
3	Sh. Basant Verma, Secretary, DLSA, Nahan, Sirmaur	Member
4	Dr. Sharawan Kumar, Sr. Environmental Engineer, HPSPCB Paonta Sahib	Member Secretary
5	Sh. Parvez Iqbal, JE, MC, Nahan	



At the outset, Sr. Environmental Engineer, HPSPCB Paonta Sahib briefed the Chairman and other members that the Hon'ble National Green Tribunal vide its order dated 07.08.2018 directed State of H.P. in OA No. 138/2016 and 139/2016 to constitute a Special Task Force comprising of District Magistrate, Superintendent of Police, Regional Officer of the State Board and one person to be nominated by the District Judge in his capacity of the District Legal Service Authority to identify persons responsible for violation of law and to prepare action plan with firm timelines for preventing discharge of untreated effluents in the River Ghaggar by setting up appropriate anti pollution devices such as STP/ETP/CETP. Wherever required polluting units have to be closed. The action plan must be realistic and must ensure that the testing of the sample of water is found to be consistent with the laid down standards within the targeted time. Thereafter the meeting commenced and following issues were discussed.


- It was decided that regular inspections and sampling of water polluting units shall be carried out by the State Board. Also the Special Task Force shall conduct the surprise checking of the units. Further, the Online Continuous Water Quality Monitoring Stations provided at the water polluting units should be operated and maintained regularly.
- It was decided that directions shall be issued to Irrigation and Public Health Department to provide Sewage Treatment Plant at Kala Amb and Moginand area in consultation with Rural Department.
- It was also decided that directions shall be issued to the Member Secretary, Special Area Development Authority (SADA), Trilokpur and Member Secretary, Industrial Area Development Authority (IADA), Kala Amb to submit a proposal for an Integrated Solid Waste Management Plant for Kala Amb. Also it was decided that SDM, Nahan will provide a suitable land for the establishment of the plant in Kala Amb.
- It was further decided that directions shall be issued to the Member Secretary, Special Area Development Authority (SADA), Member Secretary, Industrial Area Development Authority

see 2, 11/11/18  
OA Misc-  
4/12/11

(IADA), Kala Amb Trilokpur and PWD to regularly clean the open drains in Kala Amb Area to ensure that there is no water stagnation in drains.

- The Chairman also desired that directions shall be issued to GM Industries to explore the possibility of establishing Hazardous Waste Management & Disposal Facility and Bio-Medical Waste disposal facility in District Sirmaur.
- It was also decided that directions shall be issued to Chief Medical Officer & Medical Superintendent Govt. Medical College Nahan to organize a Multi Speciality Camp at Kala Amb area.
- It was further decided that request shall be made to the Member Secretary, HPSPCB Shimla to expedite the process of installation of Online Continuous Water Quality Station at the Inter State Border in Kala Amb.

The meeting ended with a vote of thanks to all the members present in the meeting.


  
Chairman-cum-Deputy Commissioner,  
Sirmaur, at Nahan

Endst. No. PCB/SEE(Pt) STF file/2018- 1553-60

Date: 29.10.18

Copy to the following for information and further necessary action please:-

1. ✓ The Member Secretary, HPSPCB, Shimla H.P.
2. The Superintendent of Police, Distt. Sirmaur, H.P.
3. The Secretary, District Legal Service Authority, Distt. Sirmaur, H.P.
4. SEE, I&PH Nahan, Distt. Sirmaur, H.P.
5. The Sub Divisional Magistrate, Nahan, Distt. Sirmaur, H.P.
6. GM, Industries, Nahan, Distt. Sirmaur, H.P.
7. Executive Officer, Municipal Council, Nahan, Distt. Sirmaur, H.P.
8. Member Secretary, SADA, Trilokpur, Kala Amb Distt. Sirmaur, H.P.

  
Sr. Environmental Engineer,  
HPSPCB, Regional Office, Paonta Sahib, H.P.



Minutes of Second Meeting held under the Chairmanship of Sh. Lalit Jain, IAS, Deputy Commissioner, Distt. Sirmaur, H.P. on 26.11.2018 at 11:30 AM regarding Special Task Force constituted by Hon'ble NGT in OA No. 138/2016 and 139/2016.

The followings were present during the meeting:

Sr. No.	Name & Designation	
1	Deputy Commissioner, Sirmaur	Chairman
2	Sh. Basant Verma, Secretary, DLSA, Nahan, Sirmaur	Member
3	Dr. Sharawan Kumar, Sr. Environmental Engineer, HPSPCB Paonta Sahib	Member Secretary
4	Sh. Ratti Ram, PO, DRDA, Nahan	Special Invitee
5	Sh. Mandeep Gupta, Executive Engineer, I&PH Nahan	Special Invitee
6	Dr. Vidhi Tomar, Consultant OA, O/o CMO Nahan	Special Invitee
7	Sh. Akshit Mehta, Planning Officer, TCP Nahan	Special Invitee

At the outset, Sr. Environmental Engineer, HPSPCB Paonta Sahib briefed the Chairman and other members about the issues discussed in the First meeting of the District Level Special Task Force on 12.10.2018 and the Agenda for the Second meeting. Thereafter the meeting commenced and following issues were discussed.

- Sr. Environmental Engineer, HPSPCB Paonta Sahib informed the house that the inspection of all the water polluting industries in Kala Amb area is being carried out by the State Board as per inspection format provided by the Executing Committee and as on dated 26.11.2018 40 industries have been inspected and samples of 25 industries have been collected. The samples have been sent to the HPSPCB Regional Laboratory, Paonta Sahib and results of the same are awaited.
- It was decided that a Multi Specialty Health Camp shall be organized on 07.12.2018 at Kala Amb by the Department of Health and HP State Pollution Control Board shall assist them in organizing the same.
- Worthy Chairman directed the representative of CMO Sirmaur that a survey of Kala Amb area shall be conducted by the Department of Health regarding the various Chronic Diseases observed in last few years to assess the impact of pollution on the health of General Public. To this representative of CMO Sirmaur informed that Health Department is already conducting such surveys. Worthy Chairman directed the Department of Health to provide data of the same to the HP State Pollution Control Board so that findings of the same can be incorporated in the report.
- Executive Engineer, I&PH Division, Nahan informed the house that I&PH Department have already conducted Drinking Water Sampling of the 22 Drinking Water Schemes in Kala Amb and Moginand Area. The results of the same are attached as Annexure-I. Further, it was





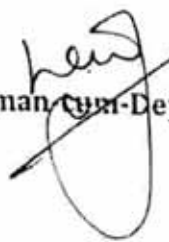
informed that I&PH have nominated two officials for conducting the joint sampling of Ground Water Samples of various industries along with HPSPCB.

- Executive Engineer, I&PH Division Nahan further informed the house that preliminary site plan with sewerage load of 1.0 MLD for the proposed sewerage scheme in Kala Amb and Moginand area has been sent to General Manager, DIC Nahan. He further informed that as a CETP is proposed at Kala Amb, therefore question of proposal regarding the STP does not arise. To this Sr. Environmental Engineer informed that I&PH have to provide the Sewer Lines and the primary treatment to the sewage collected. Secondary treatment shall be provided in the CETP on chargeable basis. Worthy Chairman directed the Executive Engineer, I&PH Nahan to prepare a DPR regarding the same within a month and also asked GM, DIC to include the said proposal in proposed CETP DPR.
- Executive Engineer, I&PH Division Nahan further informed the house that a DPR for the channelization of Markanda River from Rukhri to Kala Amb (24 KM) amounting to Rs. 114.02 Crore has been submitted by I&PH to Chairman Ganga Flood Control Commission, Patna for approval. As far as channelization of various drains leading to Markanda is concerned, those have not been included in the same. To this it was suggested that HPSIDC shall perform the channelization of the various drains leading to Markanda. The matter pendency of channelization be brought to the notice of Hon'ble NGT.
- Executive Engineer, I&PH Division Nahan further informed the house that I&PH does not perform activities like installing the Real Time Water Quality Monitoring Station and HPSPCB shall install the same. To this Sr. Environmental Engineer said that matter shall be taken up with the higher authorities so that final decision on the same can be taken.
- Worthy Chairman directed the representative of Member Secretary, SADA to identify a land in Kala Amb area along with HPSIDC for the establishment of a Solid Waste Management Site at Kala Amb.
- Further, directions were issued to the Member Secretary, Special Area Development Authority (SADA) Trilokpur, Member Secretary, Industrial Area Development Authority (IADA), Kala Amb and PWD to regularly clean the open drains in Kala Amb Area to ensure that there is no water stagnation in drains.
- It was also decided that units using bore wells as a source of water without the permission of HP Ground Water Authority shall be identified and bore wells of such unit shall be sealed after giving opportunity of hearing.

The meeting ended with a vote of thanks to all the members present in the meeting.



Chairman cum Deputy Commissioner,  
Sirmaur, at Nahan





Endst. No. PCB/SEE(Pt) STF file/2018- 1918-27

Date: 11/12/18

Copy to the following for information and further necessary action please:-

1. The Member Secretary, HPSPCB, Shimla H.P.
2. The Superintendent of Police, Distt. Sirmaur, H.P.
3. The Secretary, District Legal Service Authority, Distt. Sirmaur, H.P.
4. CMO, Nahan, Distt. Sirmaur, H.P.
5. Executive Engineer, I&PH Nahan, Distt. Sirmaur, H.P.
6. Executive Engineer, PWD Nahan, Distt. Sirmaur, H.P.
7. GM, Industries, Nahan, Distt. Sirmaur, H.P.
8. Executive Officer, Municipal Council, Nahan, Distt. Sirmaur, H.P.
9. Project Officer, DRDA, Nahan, Distt. Sirmaur, H.P.
10. Member Secretary, SADA, Trilokpur, Kala Amb Distt. Sirmaur, H.P.

   
Sr. Environmental Engineer,  
HPSPCB, Regional Office, Paonta Sahib, H.P.



**Minutes of the meeting of Special Task Force (STF) held on 31.12.2018 at Committee Room, HP Secretariat, Shimla (H.P.) – 171004' at 11.30 AM, under the Chairmanship of Sh. B.K. Agarwal, Chief Secretary, Government of Himachal Pradesh in compliance to the Hon'ble NGT order dated 07.08.2018 vide OA No. 138/2016 & 139/2016 titled Stench Grips Mansa's Sacred Ghaggar River (Suo-Motu Case) And Yogender Kumar.**

A meeting of the Special Task Force (STF) was held on 31.12.2018 at Committee Room, HP Secretariat, Shimla (H.P.) – 171004' at 11.30 AM, in compliance to the Hon'ble NGT order 07.08.2018 vide OA No. 138/2016 & 139/2016 titled Stench Grips Mansa's Sacred Ghaggar River (Suo-Motu Case) And Yogender Kumar.

At First, Sh. R.D. Dhiman, IAS, Addl. Chief Secretary (Environment, Science & Technology), welcomed the Worthy Chief Secretary, Chairman of Special Task Force and Members of the Special Task Force as well as Officials of State Governments. The List of Officials attended the meeting is enclosed as **Annexure-I**.

After a brief introduction of members Dr. R.K Pruthi, Member Secretart, HP State Pollution Control Board, briefed the Chairman about the main directions passed by Hon'ble NGT in the order dt. 07.08.2018 as follows:-

**The Special Task Force (STF) comprising of Chief Secretary, the Environment Secretary, The Secretary of Urban Development, and Secretary of Local Bodies at State Level.**

**Mandate of Special Task Force (State Level)**

- State STFs will furnish a 3 monthly report or the action taken report to the Central Pollution Control Board.

**At District Level, the STF** comprising of District Magistrate, Superintendent of Police, Regional Officer, State Pollution Control Board, one person to be nominated by the District Judge in his capacity of Head of the District Legal Services Authority.

**Mandate of Special Task Force (District Level)**

- To identify persons responsible for violation of law so that action can be taken.
- Submission of Monthly Action Taken Report to State Level Special Task Force.

He further apprised that the District Level Task Force have conducted the 2 no's of meetings at District –Solan and District – Sirmour on 11.10.2018, 26.11.2018 and 12.10.2018, 26.11.2018 for Sukhna Nallah catchment at Parwanoo and Markanda River Catchment at Kala Amb under the chairmanship of Deputy Commissioner.

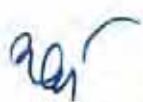
He further added that, as per the NGT order an Executing Committee was also constituted by Hon'ble NGT comprising of Justice Pritam Pal, Former Judge, Punjab and Haryana High

Court as **Chairman**, Senior Scientist from Ministry of Environment, Forest and Climate Change as **Member** and Senior Engineer/Scientist from Central Pollution Control Board as **Member**. The Executing Committee is supposed to ensure compliance of the order passed by Hon'ble NGT and submit the interim report to Hon'ble National Green Tribunal before 31.01.2019

He further added that till date, **eight meetings of the Executing Committee** have been conducted i.e. one at Shimla and seven at Chandigarh where HPPCB participated in all meetings. During **8<sup>th</sup> meeting** of the Executing Committee on dated **22.12.2018** at Chandigarh, direction are issued to State of Punjab, Haryana, Himachal Pradesh to **submit the Action Plan approved from State Government before 31.12.2018**.

As approved by the Worthy Chief Secretary, the Action Plan and Action Taken Report as submitted by Special Task Force (STF) shall be sent to Central Pollution Control Board and the Chairman, Executing Committee on 31.12.2018 in compliance to the NGT order dated 07.08.2018.

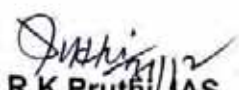
The meeting ended with vote of thanks by Addl. Chief Secretary (Environment, Science & Technology) to Worthy Chief Secretary and all members.

  
R.D. Dhiman, IAS  
Additional Chief Secretary (Env Sc. & Technology)  
to the Govt. of Himachal Pradesh

Endst. No. HPSPCB/Special Task Force/OA No. 138/2016 & 139/2016/2018- **30071-81** Dated: **31/12/18**

Copy forwarded to the following for information as per Hon'ble NGT Order:

1. Justice Pritam Pal (Retd.), Chairman of Executive Committee (Ghaggar River), constituted vide Hon'ble NGT order dt. 07.08.2018, #665, Sec. 11-B, Chandigarh.
2. The Pr. Secretary (Urban Development), to the GoHP, HP Secretariat, Shimla.
3. Deputy Commissioners, Solan and Sirmour.
4. The Member Secretary, Central Pollution Control Board, Parivesh Bhawan, East Arjun Nagar, Delhi-110032.
5. The Director, Industry, HP Shimla.
6. The Director, Environment, Science & Technology, HP Shimla.
7. The Member Secretary, H.P. State Pollution Control Board, Shimla.
8. The Director, Urban Development, HP Shimla.
9. The Director, Rural Development, HP Shimla.
10. Director, Health Department, Shimla.
11. Engineer-in Chief, IPH, Shimla.

  
Dr. R.K Pruthi, IAS  
Member Secretary, HPSPCB



Annexure-1

List of Participants of the meeting of the held on 31.12.2018 at HP Secretariat, Shimla (H.P.) 171002 under the Chairmanship of Worthy Chief Secretary to the Govt. of Himachal Pradesh to discuss the final Action Plan in compliance to the Hon'ble NGT orders in the matter of Stench Grips Mansa's Sacred Ghaggar River (Suo-Motu Case) and Yogender Kumar vide OA No. 138 OF 2016 (T<sub>NHRC</sub>) and OA No. 139 OF 2016 (T<sub>NHRC</sub>).

S. No.	Name of the Official, Designation/Department
1.	Sh. Pabodh Saxena, Pr. Secretary (Urban Development) to the GoHP, Shimla.
2.	Sh. R. D. Dhiman, Addl. Chief Secretary (Env. Sci. & Tech.) to the GoHP, Shimla.
3.	Dr. R. K. Pruthi, Member Secretary, HPSPCB, Shimla.
4.	Sh. D. C. Rana, Director (Env. S&T) HP, Shimla.
5.	Sh. Des Raj Sharma, Director, Agriculture Department, HP, Shimla.
6.	Capt. J.M. Pathania, Director, Transport Department, HP, Shimla.
7.	Sh. Hemant Gupta, CCF (M & P) Forest Department, HP, Shimla.
8.	Er. Umesh Sharma, C.B.O-cum. Secretary, HIMUDA, HP, Shimla
9.	Dr. M. M. Dhiman, Joint Director, Horticulture Department, HP, Shimla.
10.	Er. R.C. Bhatu, Engineer HIMUDA, HP, Shimla
11.	Sh. Madan Kumar Minhas, SE, HPPWD, Shimla.
12.	Er. Ajeet Kumar Ravi, Sr. Environmental Engineer, H.P. State Pollution Control Board, HQ, Shimla.
13.	Er. S. K. Shandil, Environmental Engineer, H.P. State Pollution Control Board, Regional Office Shimla.
14.	Sh. Chandan Kumar Singh, Asstt. Environmental Engineer, H.P. State Pollution Control Board, HQ Shimla.
15.	Sh. Praveen Kumar Sharma, Scientific Officer, H.P. State Pollution Control Board, HQ Shimla,
16.	Sh. K. S. Bragta, Assistant (Nodal Officer, NGT Matter), H.P. State Pollution Control Board, HQ Shimla.

Remarks if Any	BDL = Below Detection Limit
<p>Substrate</p> <p>Control (msl/Chemist)</p> <p>Ident Division Nahana</p>	<p>Executive Engineer</p> <p>T &amp; PH Division, Nahana,</p>